



# NATURE IS HOME IN WEST HOLLYWOOD

**1**  
HOTEL  
*west hollywood*



# GATHER

SPACE TO GATHER. REASONS TO CELEBRATE.  
LET US PERSONALIZE EVERY DETAIL.





---

## SERVICES

Meet and mingle in flexible spaces that flow seamlessly from social to private, indoor and out.

With more than 14,000 total square feet of thoughtfully designed event spaces — including catering and event services — discover the perfect space to gather, surrounded by nature and views of the LA skyline.

### SPECIAL EVENTS

Enjoy our custom planning services for an unforgettable wedding, mitzvah, gala, or fashion show.

### MEETINGS

We offer seamless event planning that makes it easy to add elements like digital guides and theme-based modules for a more mindful meeting.

### CATERING

Our culinary and beverage teams create menus designed for the season and unique to your event. Full of fresh, local ingredients, savor dishes and drinks that are both good and good for you.






---

## SUNSET

### 6,668 SQ. FT. TOTAL

3,905 sq. ft. Sunset  
 1,925 sq. ft. Sunset North  
 1,980 sq. ft. Sunset South  
 1,114 sq. ft. Sunset North Foyer  
 1,649 sq. ft. Sunset South Foyer  
 16'3" - 17' ceiling height

### 840 GUESTS TOTAL

500 guests Sunset  
 250 guests Sunset North  
 250 guests Sunset South  
 140 guests Sunset North Foyer  
 200 guests Sunset South Foyer



Tall windows frame LA skyline views, with roll-down sheers and blackout shades.

---

# MELROSE

## 1,986 SQ. FT. TOTAL

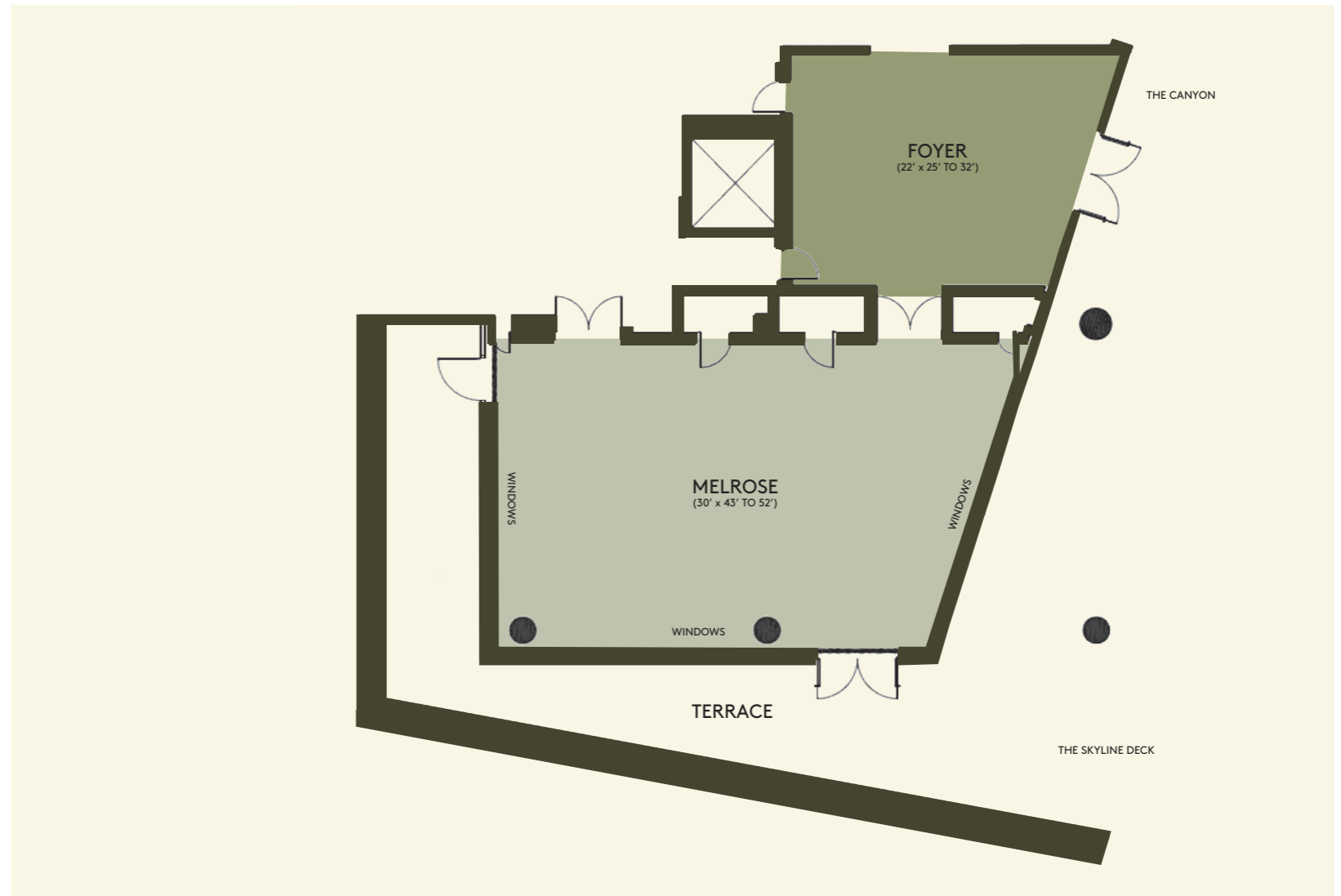
1,371 sq. ft. Melrose

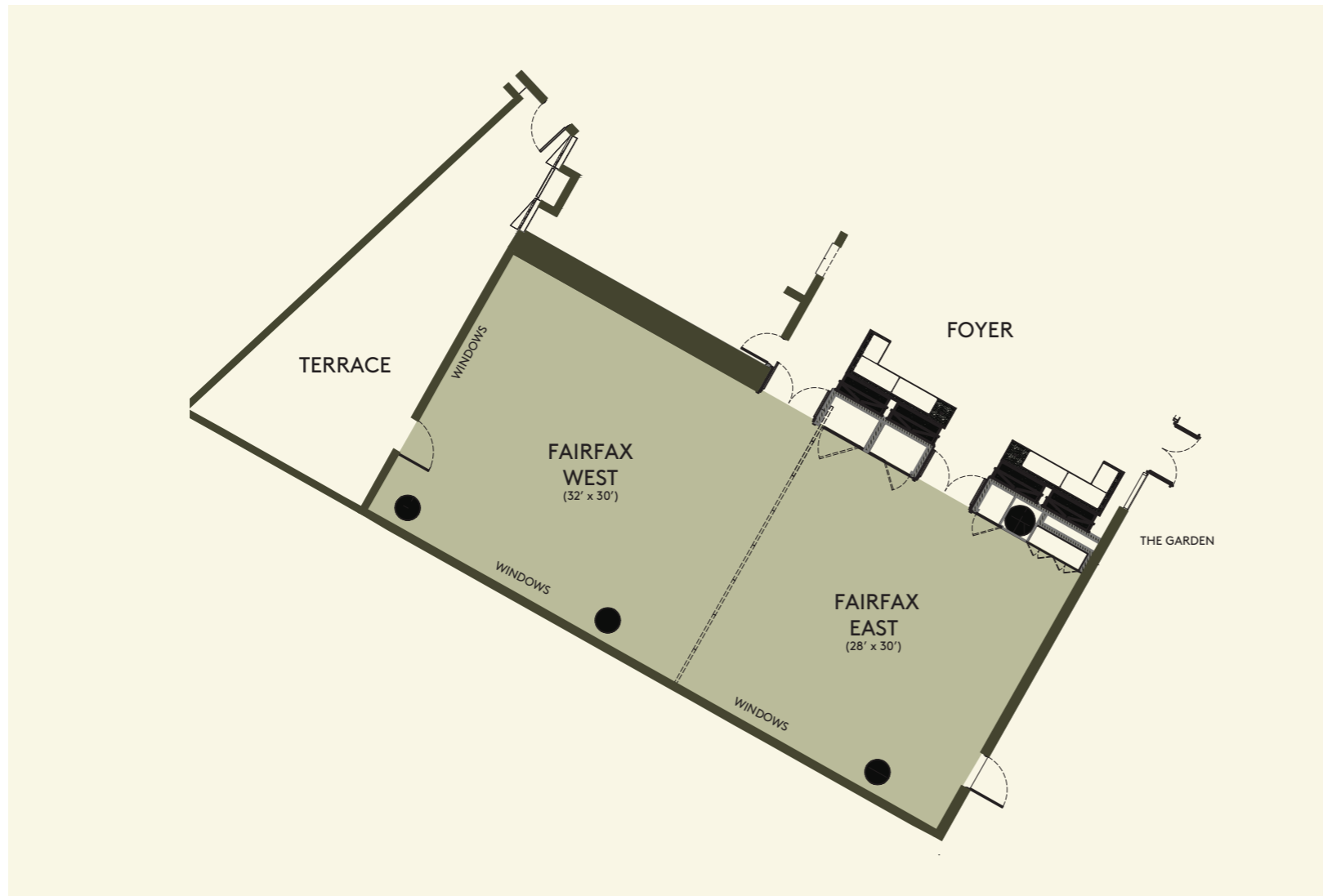
615 sq. ft. Foyer

11'3"-12' ceiling height

## 200 GUESTS TOTAL

Floor-to-ceiling windows on three sides showcase panoramic LA views, with sheers and blackout shades.





---

## FAIRFAX

### 1,800 SQ. FT. TOTAL

960 sq. ft. Fairfax West

840 sq. ft. Fairfax East

### 280 GUESTS TOTAL

180 guests Fairfax West

100 guests Fairfax East

Tall windows frame LA skyline views, with roll-down sheets and blackout shades.

Located on the lobby level.





---

# THE GARDEN

**5,000 SQ. FT. TOTAL**

**300 GUESTS TOTAL**

Filled with native greenery, The Garden is an outdoor sanctuary in the heart of West Hollywood, accommodating up to 300 guests reception-style. Cascading vines and potted plants surround the space, while mature olive trees rising from a raw-wood planter create a striking centerpiece.





---

## MEETING ROOMS

**432-485 SQ. FT.**

**UP TO 12 GUESTS**

Bring the team together, strike the next big idea, or close the deal in one of two meeting rooms accommodating up to 12 guests each. With full-service catering and A/V, we take care of the planning, so you can take care of business.