



Radisson BLU
EDWARDIAN
NEW PROVIDENCE WHARF

MEETINGS AND EVENTS

AT THE RADISSON BLU EDWARDIAN, NEW PROVIDENCE WHARF

Our experience creates a better experience



Lobby



Private Room 5



River Room



Private Room 1&2



Ontario Room





Meetings and events should always be this easy

- Flexible spaces
- Dedicated consultants
- Complimentary wireless
- Food that's fast, fresh and healthy
- Sensible pricing without the hidden extras
- All-inclusive small meeting packages
- Loyalty rewarded with Points for Planners

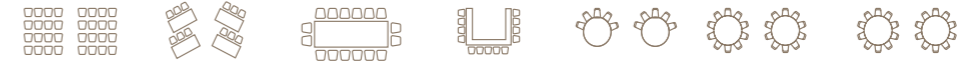
Meet Well

Meeting well means treating well the things that really matter. More than just reducing your meeting's environmental impact, it's also a commitment to positively affecting the communities we are a part of. Our approach to responsible business means a clearer conscience for you – whatever the size and style of your event.

Visit radissonblu-edwardian.com/meetwell

New Providence Wharf gives you seven high-spec meeting and event spaces in a serene waterside location moments from Canary Wharf. With tomorrow's technology, seamless service and a great bar and restaurant for time out, this is a place designed for relaxation and clear thinking.

Capacities

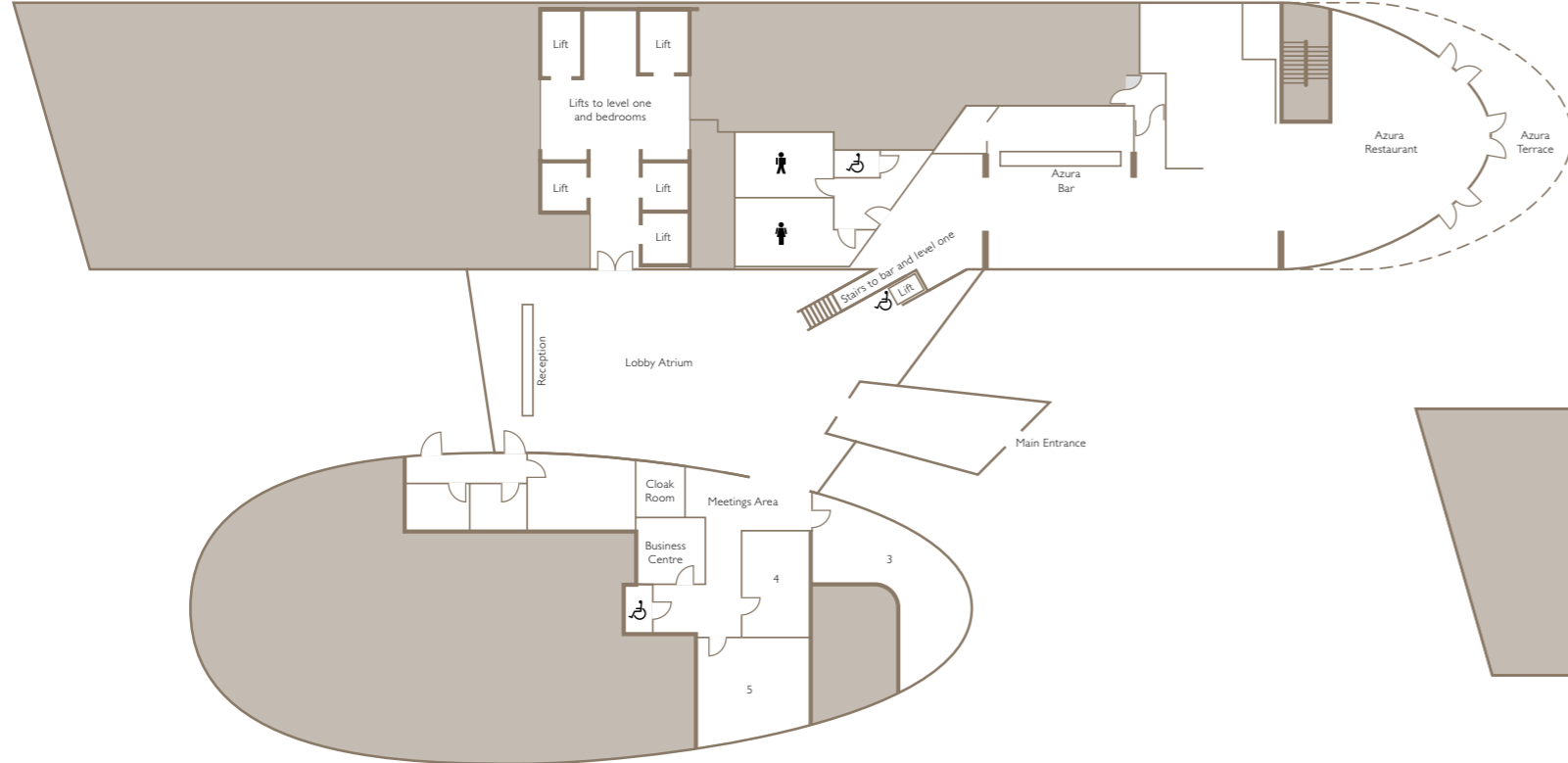


	Theatre	Classroom	Boardroom	U-Shape	Cabaret	Reception	Lunch/Dinner
Ontario Room	250	150	60	50	150	250	200
Ontario Room A	125	80	40	36	70	125	100
Ontario Room B	125	80	40	36	70	125	100
Ontario Foyer/bar	–	–	–	–	–	150	–
River Room	50	25	20	20	24	80	60
Private Room 1	30	18	18	14	–	30	30
Private Room 2	24	18	18	12	–	30	30
Private Room 1&2	80	36	40	24	48	80	70
Private Room 3	–	–	14	–	–	–	14
Private Room 4	–	–	12	–	–	–	12
Private Room 5	–	–	14	–	–	–	14

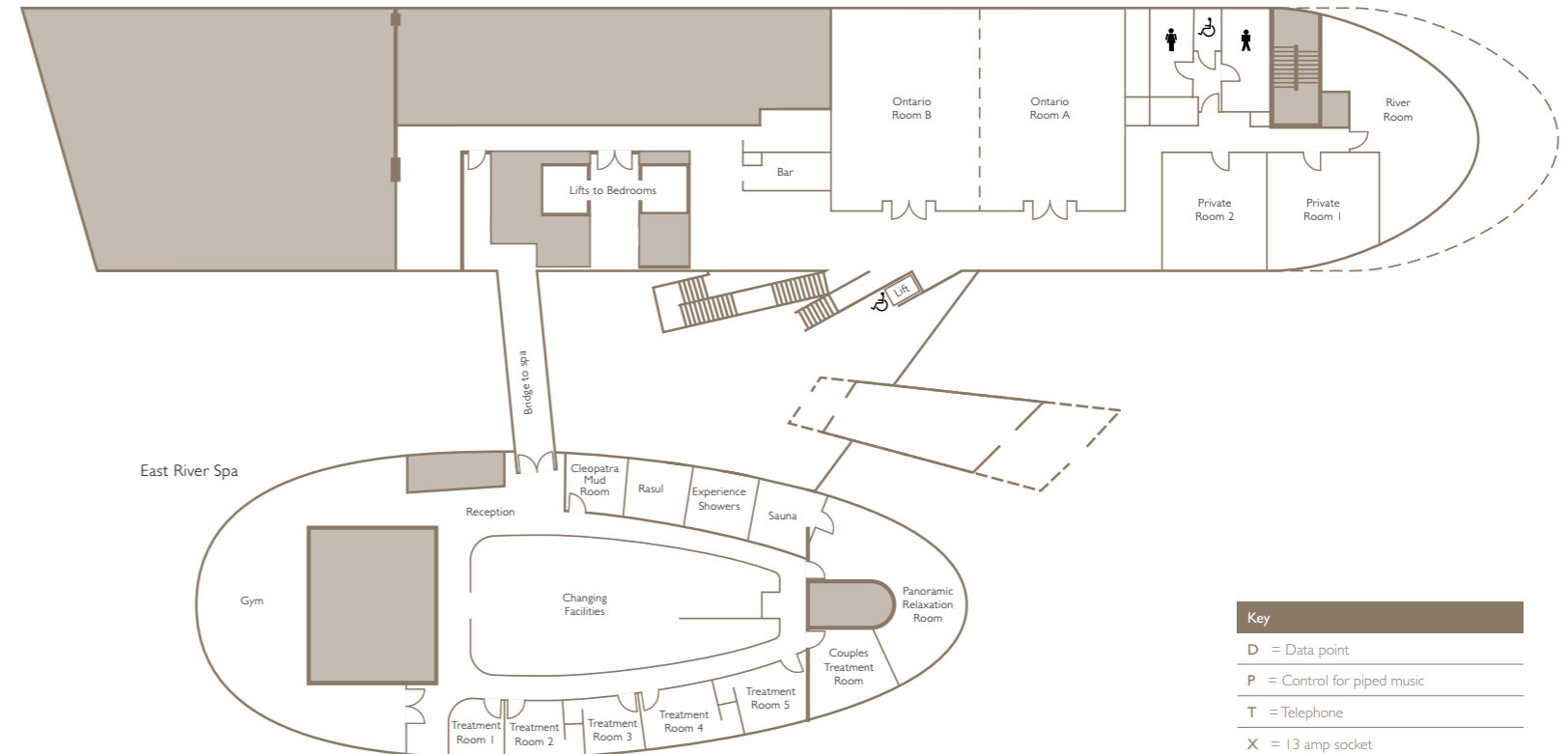
Floor Dimensions

	Area	Length m (ft)	Width m (ft)	Height m (ft)
Ontario Room	210 m ² (222.3 ft ²)	17.5 m (57')	12 m (39')	3.5 m (11'6")
Ontario Room A	103 m ² (109.2 ft ²)	8.6 m (28')	12 m (39')	3.5 m (11'6")
Ontario Room B	104 m ² (109.2 ft ²)	8.7 m (28')	12 m (39')	3.5 m (11'6")
Ontario Foyer/bar	116 m ² (123.5 ft ²)	29 m (95')	4 m (13')	3.1 m (10')
River Room	72 m ² (775 ft ²)	11 m (36')	6 m (20')	3.1 m (10')
Private Room 1	40 m ² (42.0 ft ²)	6.2 m (20')	6.5 m (21')	3.1 m (10')
Private Room 2	41 m ² (44.0 ft ²)	6.7 m (22')	6.1 m (20')	3.1 m (10')
Private Room 1&2	81 m ² (86.0 ft ²)	12.9 m (42')	6.5 m (21')	3.1 m (10')
Private Room 3	32 m ² (338 ft ²)	8 m (26')	4 m (13')	2.3 m (7'6")
Private Room 4	24 m ² (258 ft ²)	6.2 m (20')	3.8 m (12')	2.7 m (8'10")
Private Room 5	36 m ² (399 ft ²)	6.4 m (21')	5.7 m (19')	2.7 m (8'10")

Lower Ground Floor



First Floor



All meeting rooms are fully air conditioned with natural daylight and benefit from:

- Complimentary wireless
- CD, DVD, VHS
- LCD projector and screen or plasma
- MP3 and PC connectivity
- TV, radio
- Procon integrated AV control panel
- AMX touchscreen
- AV control system (Ontario and River Room)

The Ontario Room also benefits from 63amp 3-phase, lectern, mics, pa, and staging.

Key

- D = Data point
- P = Control for piped music
- T = Telephone
- X = 13 amp socket
- ▒ = Screen
- ⊙ = Ceiling speaker connected to amplifier
- ⊞ = Floor socket
- ⊞ = Ceiling mounted projector

