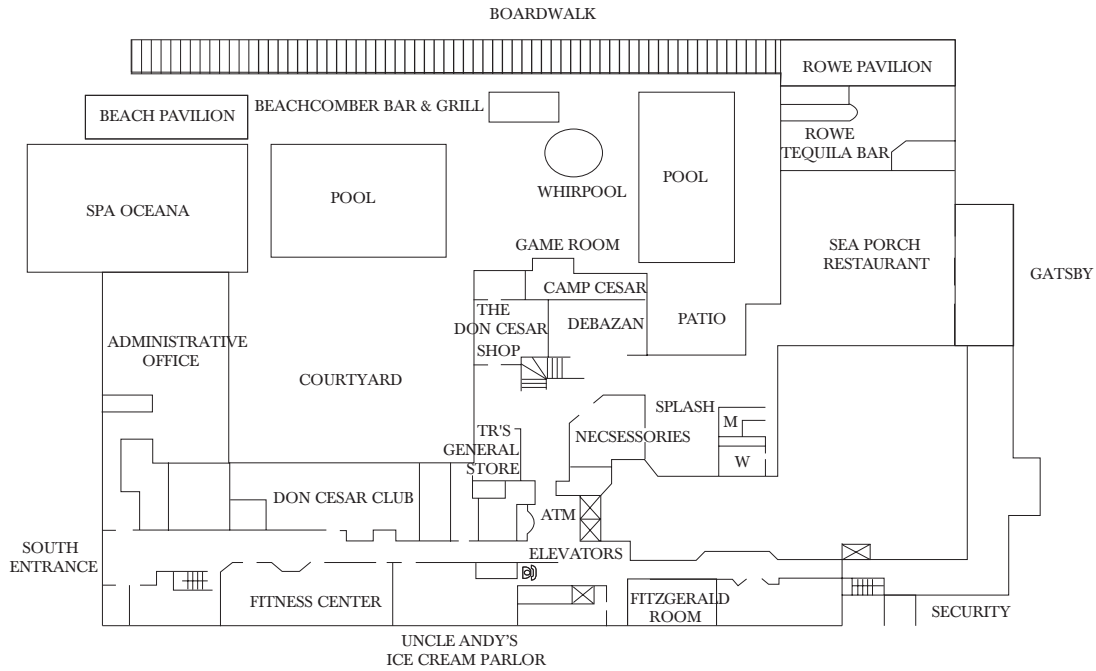
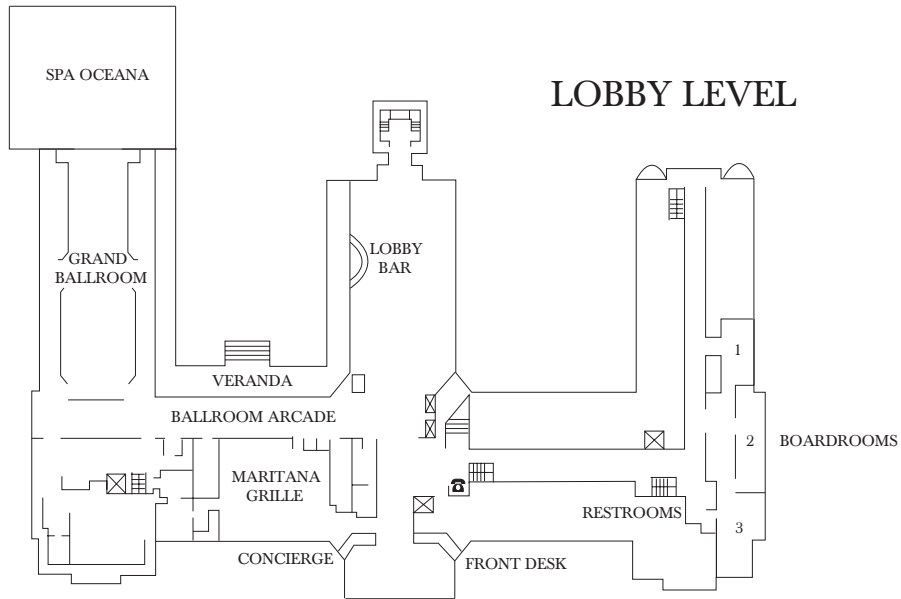


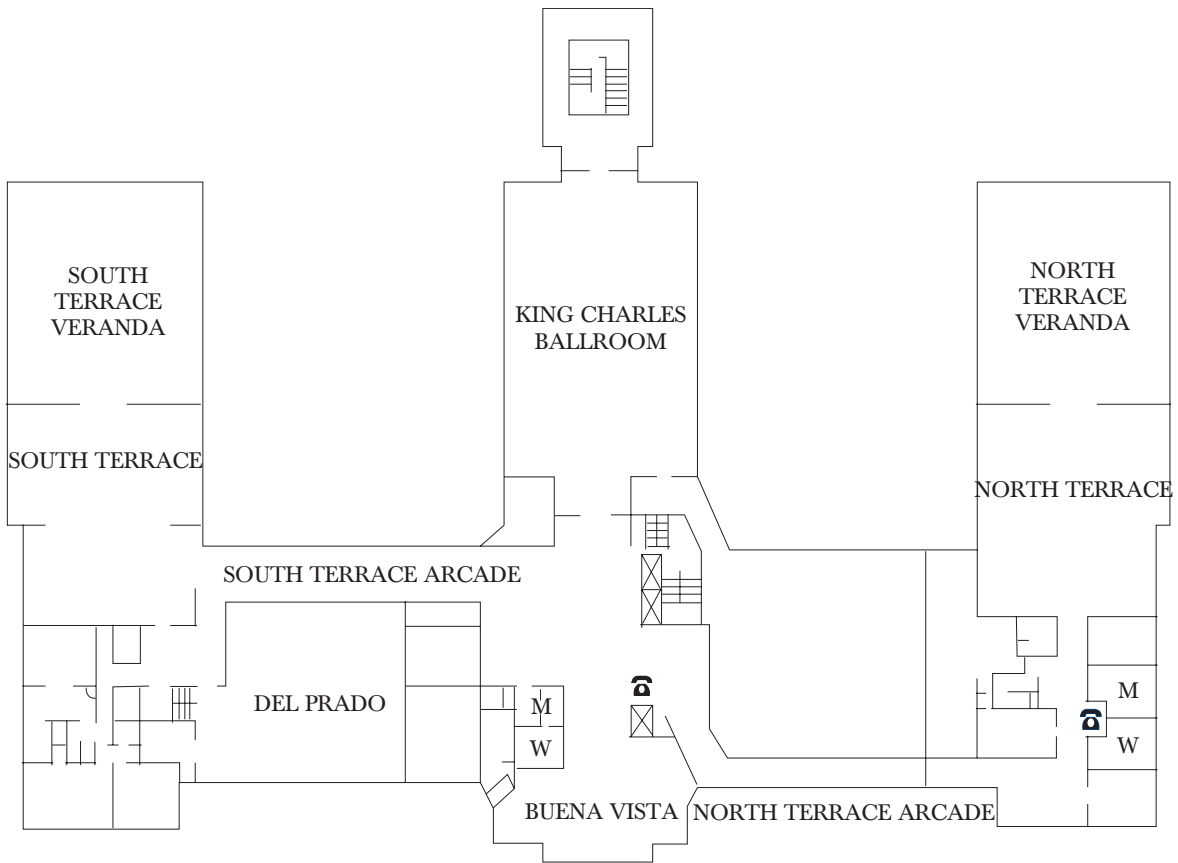
GARDEN LEVEL



LOBBY LEVEL



ROOM	DIMENSIONS	SQ. FT.	THEATER	CLASSROOM	CONFERENCE	U-SHAPE	CRESCENT	BANQUET
GARDEN LEVEL								
Rowe Pavilion	32'x42'x16'	1,344+	—	—	—	—	—	100+
Beach Pavilion	31'x50'x16'	1,550+	125	—	20	24	60	100+
Fitzgerald Room	23'x21'x8'	483	40	20	20	20	18	30
Gatsby	46'x35'x9'5"	1,500	60	24	24	30	—	50
LOBBY LEVEL								
Grand Ballroom	107'x53'x16'	5,671	500	300	50	50	200	300
Ballroom Arcade	110'x15'x14'	1,650	—	—	—	—	—	—
Board Room 1	27'x15'x9'	405	—	—	14	—	—	—
Board Room 2	35'x13'x9'	455	30	24	24	20	18	24
Board Room 3	30'x17'x9'	510	30	24	24	20	18	24
Veranda	90'x12'	1,080	—	—	—	—	—	124



FIFTH FLOOR

ROOM	DIMENSIONS	SQ. FT.	THEATER	CLASSROOM	CONFERENCE	U-SHAPE	CRESCENT	BANQUET
FIFTH FLOOR								
King Charles Ballroom	69'x50'x15'	3,450	350	170	50	70	144	240
South Terrace	50'x50'x10'	2,500	150	100	48	46	90	150
South Terrace Veranda	51'x52'	2,652	—	—	—	—	60	100
North Terrace	50'x50'x10'	2,500	150	100	48	46	90	150
North Terrace Veranda	51'x52'	2,652	—	—	—	—	60	100
Del Prado	53'x40'x15'	2,120	150	110	48	50	72	120
Buena Vista	50'x30'x15'	1,500	90	64	38	30	42	70
MEETING ROOMS								
Frances Room	19'x17'x8'	323	24	15	14	10	12	16
Harold Room	19'x17'x8'	323	24	15	14	10	12	16
Parker Room	19'x17'x8'	323	24	15	14	10	12	16



THE DON CESAR

Built in 1928 to resemble a Mediterranean-style castle, and known as Florida's "Pink Palace", The Don CeSar has been revitalized and refreshed within, ensuring a future as rich and storied as its history.

Sugar-sand beaches, Spa Oceana, poolside and beach activities, Camp CeSar for kids and Four-Diamond dining await visitors who return season after season.

The Pink Palace exemplifies the grandness of America's classic beach resorts and is the only historic hotel on Florida's Gulf Coast.

TRANSPORTATION

St. Pete Beach: Just steps away

Downtown St. Petersburg: 15 minutes

Tampa International Airport: 30 minutes

Orlando Theme Parks: 90 minutes

ROOMS

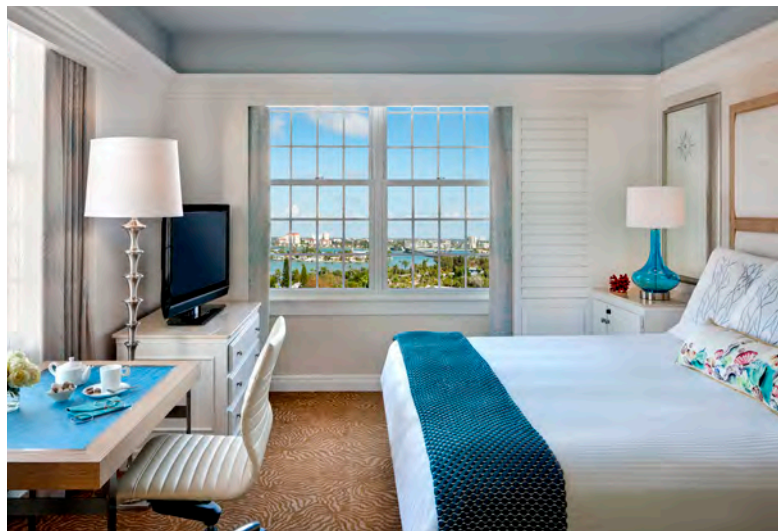
The Don CeSar features 277 guestrooms including 36 suites and 2 penthouses. These light, airy rooms have flat-screen HD color TVs, ironing boards and irons, hair dryers, Premium Plus Wi-Fi, Keurig coffeemakers and minibars.

MEETING FACILITIES

The Don offers 22,000 square feet of indoor function space, including the Grand Ballroom and the King Charles Ballroom with floor-to-ceiling windows overlooking the Gulf of Mexico. Nine additional meeting rooms range in size from 200 to over 2,100 square feet. The hotel also offers 16,000 square feet of creative outdoor space including verandas, outdoor terraces and two beachfront pavilions overlooking the Gulf.

SERVICES & FACILITIES

Fitness Center, personal training, Business Center, retail shops, Self and valet parking available.



DINING & ENTERTAINMENT

MARITANA GRILLE

Featuring contemporary American cuisine with a focus on local seafood and traditional favorites with creative twists—complemented by an extensive wine list and first-class service. Maritana Grille was voted one of the Top 10 seafood restaurants in the United States by the Gayot Guide, and has received AAA's 4-Diamond Rating for the past 16 years.

SEA PORCH RESTAURANT

Serving breakfast, lunch and dinner, Sea Porch is a casual way to begin or end the perfect sun and surf-filled day.

BEACHCOMBER BAR AND GRILL

Serving specialty drinks, sandwiches and snacks poolside.

THE LOBBY BAR

The epicenter of the hotel, offering comfortable yet elegant seating with evening entertainment and your favorite wine, beer and cocktails.

ROWE BAR

Featuring local brews and craft cocktails, served with savory charcuteries and the freshest seafood selection, complemented by stunning beach views.

UNCLE ANDY'S ICE CREAM PARLOR

Enjoy homemade ice cream, sundaes, banana splits and Starbucks coffee, as well as breakfast on-the-go items.

SHOPPING

DEBAZAN

Our women's and men's clothing store offers a great selection of Escapada, Eric Javitz, Tommy Bahama, Bugatchi and Island Company.

SPLASH

The hottest names in style for designer swimwear and accessories. Selections by Trina Turk, Ray-Ban, Tiffany, Maui Jim, Dolce & Gabbana, Michael Kors, Burberry and other high-end brands.

THE DON CESAR SHOP

Take home your own little piece of the Pink Palace. Our logo shop has all of the souvenirs you need. Check out our selection of t-shirts, fleece, jackets, caps, toys and other gifts.

NECESSARIES

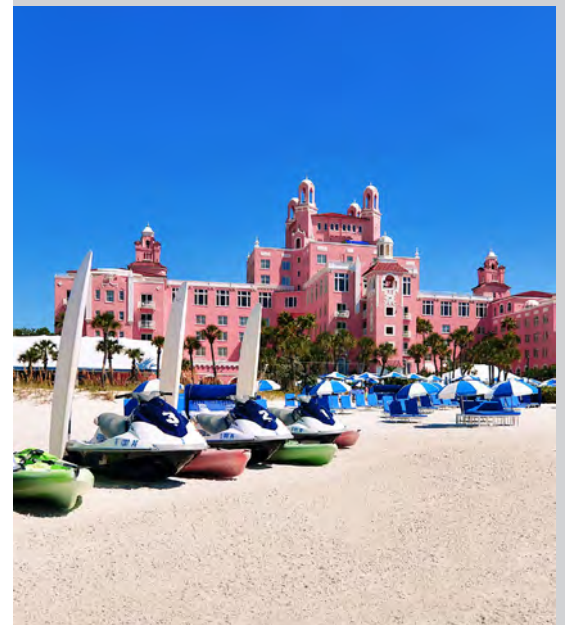
A unique shop offering an extensive line of men's and women's designer accessories including Brighton, Skemo, Lauren Adams, John Medeiros, Uno 50, Antelope Shoes and more.

TR'S GENERAL STORE

Named after the founder of the hotel, this shop offers sundries, books, snacks, cigars, electronics and gift baskets.

SHOPPING MADE SIMPLE

Pressed for time? Visit www.doncesarshop.com for all your online shopping needs.



RECREATION

BOUCHER BROTHERS

WATER SPORTS

Providing beachfront watersports equipment including paddleboards, kayaks, jetskis, waverunners and more.

CAMP CESAR

Children ages 4-12 enjoy innovative and uniquely local themes! Camp CeSar offers exciting and educational programs, outdoor sea explorations, arts & crafts, games, movies and more!

SPA OCEANA

Treat yourself to an hour, an afternoon, or an entire day at Spa Oceana, where you'll find countless ways to rejuvenate your mind, body and spirit.

Featuring a whirlpool, steam room, Whisper Lounge, rooftop terrace overlooking the Gulf of Mexico, and a full-service salon.

DON CESAR CLUB &

FITNESS CENTER

Located on the Garden Level with 24-hour access with room key. Featuring Life Fitness exercise equipment and complimentary daily fitness classes. Individual and group training sessions are also available.

CHEERS! EVENTS

An on-site full service event planner for weddings, corporate or social themed events, tours, transportation and custom-designed team-building events.