



# MEETING & EVENT GUIDE

OMNI  HOTELS  
& RESORTS  
seaport | boston

teneo  
HOSPITALITY GROUP



## ABOUT OMNI BOSTON HOTEL AT THE SEAPORT



### NEVER STAY THE SAME

Omni Boston Hotel at the Seaport interiors are built on a foundation of culture and a view to the future. Taking inspiration from Boston's timeless cultural institutions, the hotel's essence is accessible to everyone, welcoming guests to experience art history or current innovations. Located in the ever-evolving Seaport neighborhood, the hotel's offerings will be unmatched only to its striking waterfront views of the Boston Harbor.

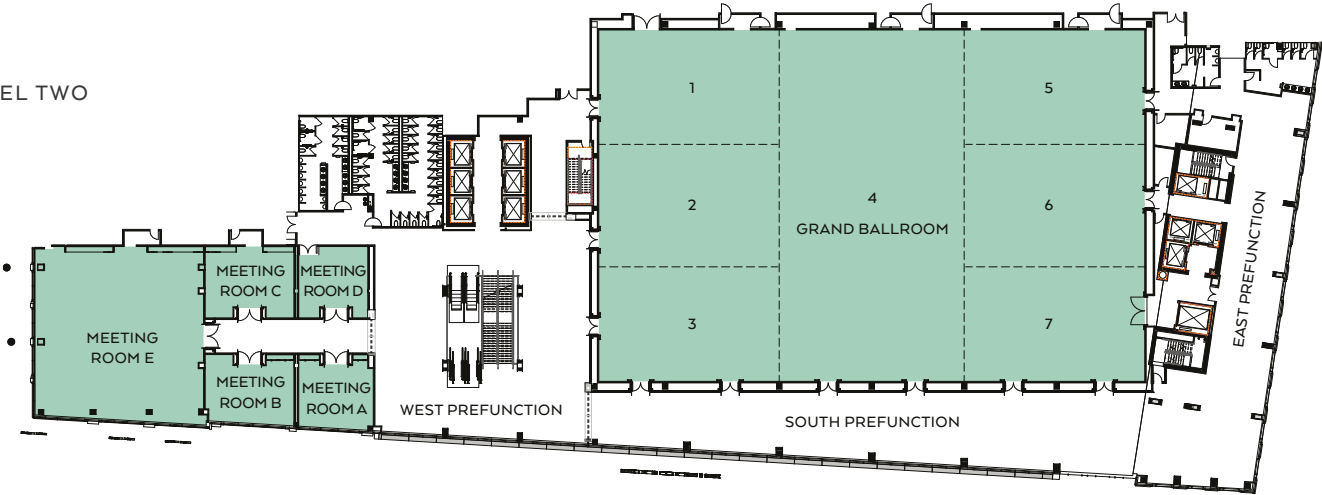


### AN EVENT TO REMEMBER

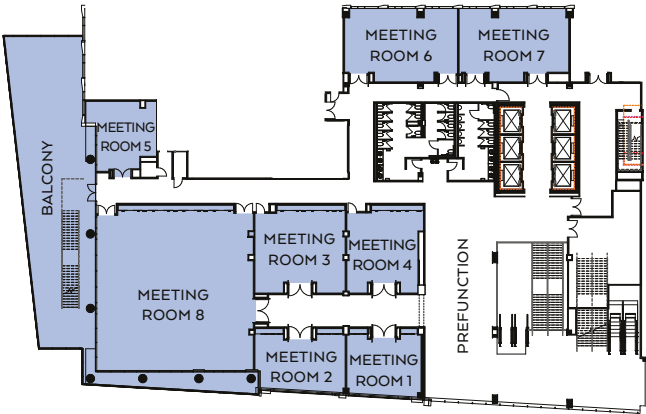
- 1,055 specially commissioned guest rooms, including 52 luxurious suites
- Approximately 100,000 square feet of flexible indoor and outdoor meeting, event and prefunction space that includes the largest hotel ballroom in Boston's Seaport
- Direct air conditioned access to 2.1 million square feet of meeting and exhibit space at the Boston Convention & Exhibition Center (BCEC)
- Urban rooftop pool deck on the fourth floor will allow guests to host year-round events featuring views of the Boston skyline
- On-site state-of-the-art audiovisual equipment services with Wi-Fi internet access
- Multiple food and beverage options include an all-day restaurant and collaborative workspace, lobby lounge, multi-sensory food and beverage entertainment lounge and French brasserie and boulangerie
- Climate-controlled, year-round access to pool bar and grill
- Signature Mokara Spa and blowout hair bar
- State-of-the-art fitness center

OMNI BOSTON HOTEL AT THE SEAPORT MEETING SPACE

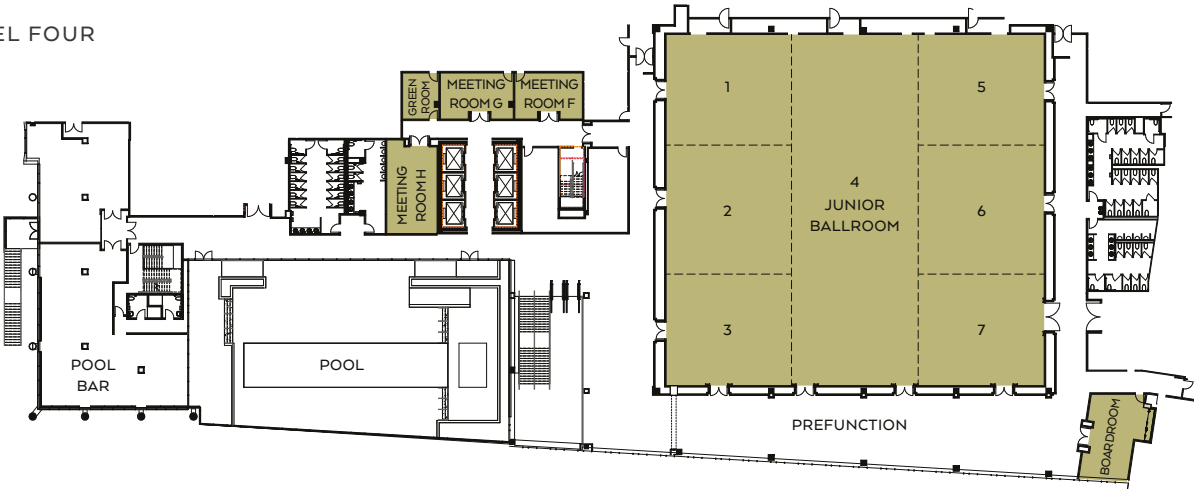
LEVEL TWO



LEVEL THREE



LEVEL FOUR

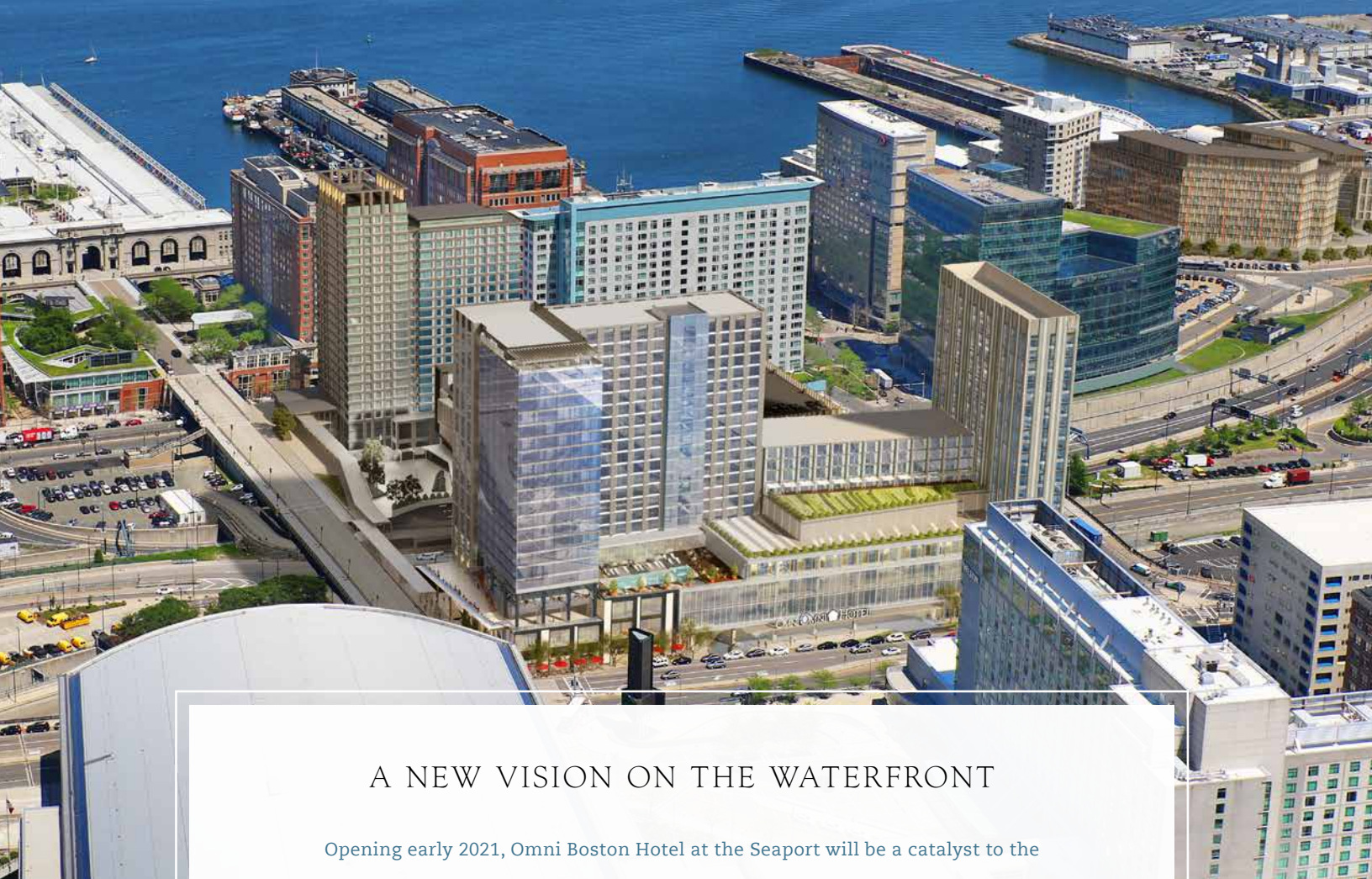


## OMNI BOSTON HOTEL AT THE SEAPORT MEETING ROOM CAPACITY

	SQUARE FOOTAGE	HEIGHT	BANQUET 72"	CLASSROOM	U-SHAPE	THEATRE	RECEPTION	EXHIBIT 8' X 10'	EXHIBIT 10' X 10'	HOLLOW SQUARE
<b>LEVEL TWO</b>										
<b>GRAND BALLROOM</b>	<b>25,829</b>	<b>23'</b>	<b>2,149</b>	<b>1,782</b>	<b>739</b>	<b>2,867</b>	<b>2,583</b>	<b>161</b>	<b>129</b>	<b>320</b>
GRAND 1-4	16,502	23'	1,373	1,139	472	1,832	1,651	103	83	396
GRAND 4-7	16,502	23'	1,373	1,139	472	1,832	1,651	103	83	396
GRAND 1-3	8,125	23'	676	561	232	902	813	51	41	195
GRAND 5-7	8,125	23'	676	561	232	902	813	51	41	195
GRAND 1	2,665	23'	222	184	76	296	267	17	13	64
GRAND 2	2,795	23'	233	193	80	310	280	17	14	67
GRAND 3	2,665	23'	222	184	76	296	267	17	13	64
GRAND 4	8,382	23'	697	578	240	930	838	52	42	201
GRAND 5	2,665	23'	222	184	76	296	267	17	13	64
GRAND 6	2,795	23'	233	193	80	310	280	17	14	67
GRAND 7	2,665	23'	222	184	76	296	267	17	13	64
<b>PREFUNCTION SOUTH</b>	<b>5,055</b>	—	—	—	—	—	—	—	—	—
<b>PREFUNCTION EAST</b>	<b>3,988</b>	—	—	—	—	—	—	—	—	—
<b>PREFUNCTION WEST</b>	<b>4,922</b>	—	—	—	—	—	—	—	—	—
MEETING ROOM A	664	12'	55	46	19	74	66	—	—	16
MEETING ROOM B	749	12'	62	52	21	83	75	—	—	18
MEETING ROOM C	847	12'	70	58	24	94	85	—	—	20
MEETING ROOM D	581	12'	48	40	17	64	58	—	—	14
MEETING ROOM E	3,908	12'	325	270	112	434	391	24	20	94
<b>LEVEL THREE</b>										
MEETING ROOM 1	626	8.6'	52	43	18	69	63	—	—	15
MEETING ROOM 2	694	8.6'	58	48	20	77	69	—	—	17
MEETING ROOM 3	779	12'	65	54	22	86	78	—	—	19
MEETING ROOM 4	798	12'	66	55	23	89	80	—	—	19
MEETING ROOM 5	557	12'	46	38	16	62	56	—	—	13
MEETING ROOM 6	1,011	12'	84	70	29	112	101	—	—	24
MEETING ROOM 7	955	12'	79	66	27	106	96	—	—	23
MEETING ROOM 8	3,365	13'	280	232	96	374	337	21	17	81
<b>PREFUNCTION</b>	<b>2,054</b>	—	—	—	—	—	—	—	—	—
<b>LEVEL FOUR</b>										
<b>JUNIOR BALLROOM</b>	<b>17,575</b>	<b>23.6'</b>	<b>1,462</b>	<b>1,213</b>	<b>503</b>	<b>1,951</b>	<b>1,758</b>	<b>110</b>	<b>88</b>	<b>422</b>
JUNIOR 1-4	11,512	23.6'	958	794	329	1,278	1,151	72	58	276
JUNIOR 4-7	11,512	23.6'	958	794	329	1,278	1,151	72	58	276
JUNIOR 1-3	5,670	23.6'	472	391	162	629	567	35	28	136
JUNIOR 5-7	5,670	23.6'	472	391	162	629	567	35	28	136
JUNIOR 1	1,800	23.6'	150	124	51	200	180	11	9	43
JUNIOR 2	2,070	23.6'	172	143	59	230	207	13	10	50
JUNIOR 3	1,800	23.6'	150	124	51	200	180	11	9	43
JUNIOR 4	5,842	23.6'	486	403	167	648	584	37	27	140
JUNIOR 5	1,800	23.6'	150	124	51	200	180	11	9	43
JUNIOR 6	2,070	23.6'	172	143	59	230	207	13	10	50
JUNIOR 7	1,800	23.6'	150	124	51	200	180	11	9	43
<b>PREFUNCTION</b>	<b>3,786</b>	—	—	—	—	—	—	—	—	—
MEETING ROOM F	385	9'	32	27	11	43	39	—	—	9
MEETING ROOM G	413	9'	34	28	12	46	41	—	—	10
MEETING ROOM H	593	10'	49	41	17	66	59	—	—	14
GREEN ROOM	214	9'	18	15	—	24	21	—	—	—
BOARDROOM	609	9'	—	—	—	—	—	—	—	—

Meeting room capacities were determined using 72" rounds of 10 (rounds capacity), three chairs per 6'x30" table (u-shape and conference capacity) and three chairs per 6'x18" table (classroom capacity) allowing for minimal audiovisual equipment.

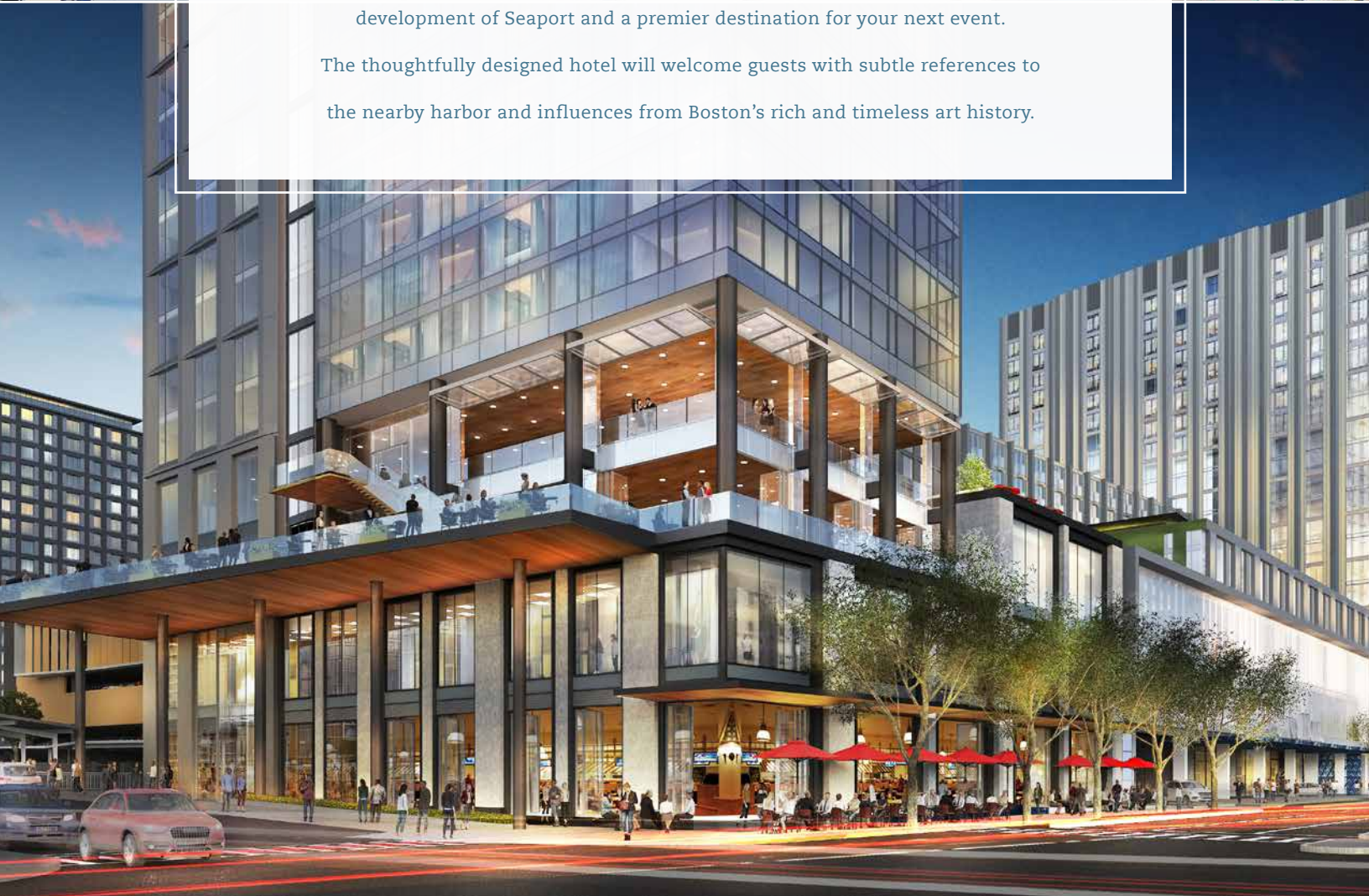




## A NEW VISION ON THE WATERFRONT

Opening early 2021, Omni Boston Hotel at the Seaport will be a catalyst to the development of Seaport and a premier destination for your next event.

The thoughtfully designed hotel will welcome guests with subtle references to the nearby harbor and influences from Boston's rich and timeless art history.





## BOSTON HIGHLIGHTS

The hotel is situated in the Seaport neighborhood with unobstructed waterfront views, eight minutes from the Boston Logan International Airport, two miles from Beacon Hill and 2.5 miles from Back Bay.

### ATTRACTIONS

Boston Convention and Exhibition Center

Boston Harborwalk

Fenway Park

Boston Harbor

Christopher Columbus Waterfront Park

Faneuil Hall

### ARTS & CULTURE

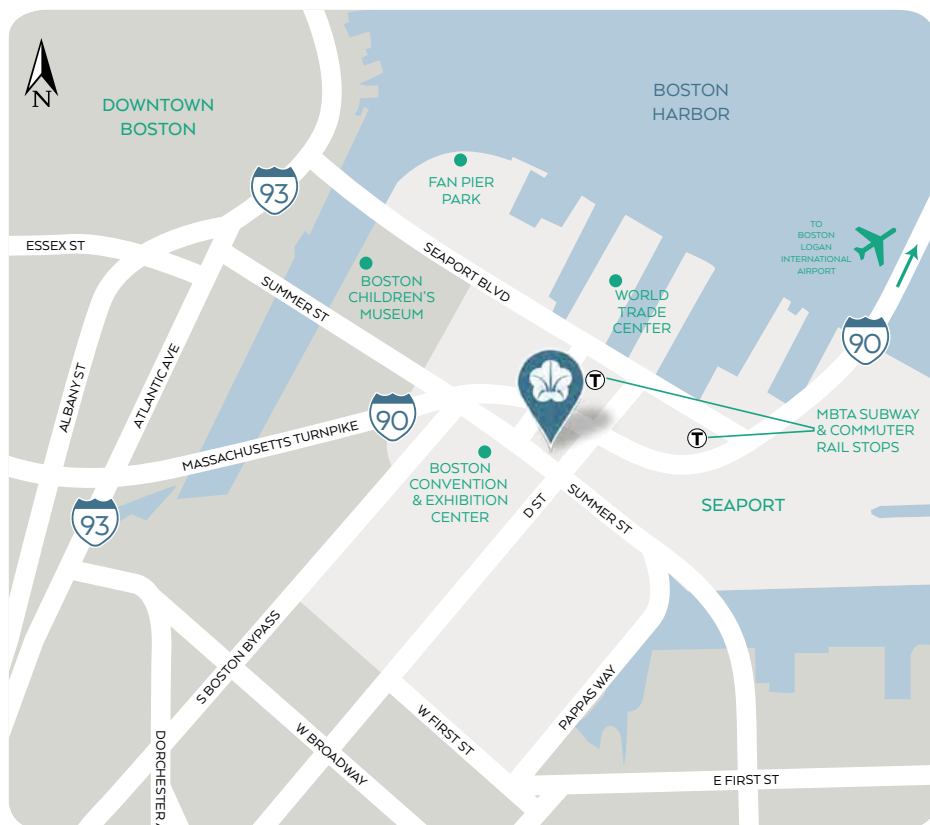
Boston Children's Museum

Boston Tea Party Ships & Museum

New England Aquarium

USS Constitution Museum

The Institute of Contemporary Art



**OMNI BOSTON HOTEL  
AT THE SEAPORT**  
450 SUMMER STREET  
BOSTON, MA 02210