



Radisson **BLU**
EDWARDIAN, BLOOMSBURY ST

MEETINGS AND EVENTS

AT THE RADISSON BLU EDWARDIAN, BLOOMSBURY ST

Our experience creates a better experience



Meetings and events should always be this easy

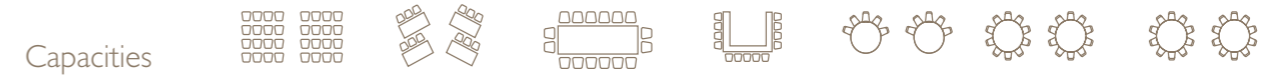
- Flexible spaces
- Dedicated consultants
- Complimentary wireless
- Food that's fast, fresh and healthy
- Sensible pricing without the hidden extras
- All-inclusive small meeting packages
- Loyalty rewarded with Points for Planners
radissonblu-edwardian.com/pointsforplanners

Meet Well

Meeting well means treating well the things that really matter. More than just reducing your meeting's environmental impact, it's also a commitment to positively affecting the communities we are a part of. Our approach to responsible business means a clearer conscience for you – whatever the size and style of your event.

Visit radissonblu-edwardian.com/meetwell

A £25 million makeover brings nine sleek new spaces for up to 300 to the heart of London's avant garde creative quarter. Unique in the capital, each room offers full HD video and data projection, with built-in Blu-Ray equipment for high impact video playback. A buzzing bar and restaurant and an atmospheric ambience reminds you this is no corporate clone hotel.



	Theatre	Classroom	Boardroom	U-shape	Cabaret	Reception	Lunch/Dinner
Folio Room	300	140	60	60	120	350	250
Folio 1 and 2	180	110	50	40	80	240	170
Folio 2 and 3	140	70	40	35	70	180	100
Folio 1	150	70	30	35	45	180	120
Folio 2	75	30	24	25	28	80	50
Folio 3	75	30	22	18	28	80	50
Private Room 1	–	–	16	–	–	–	–
Private Room 2	70	30	30	30	30	100	50
Private Room 3	40	18	20	20	18	70	40
Private Room 4	40	18	16	16	18	40	30
Private Room 5	40	18	18	18	21	40	30
Private Room 6	–	–	8	–	–	–	–

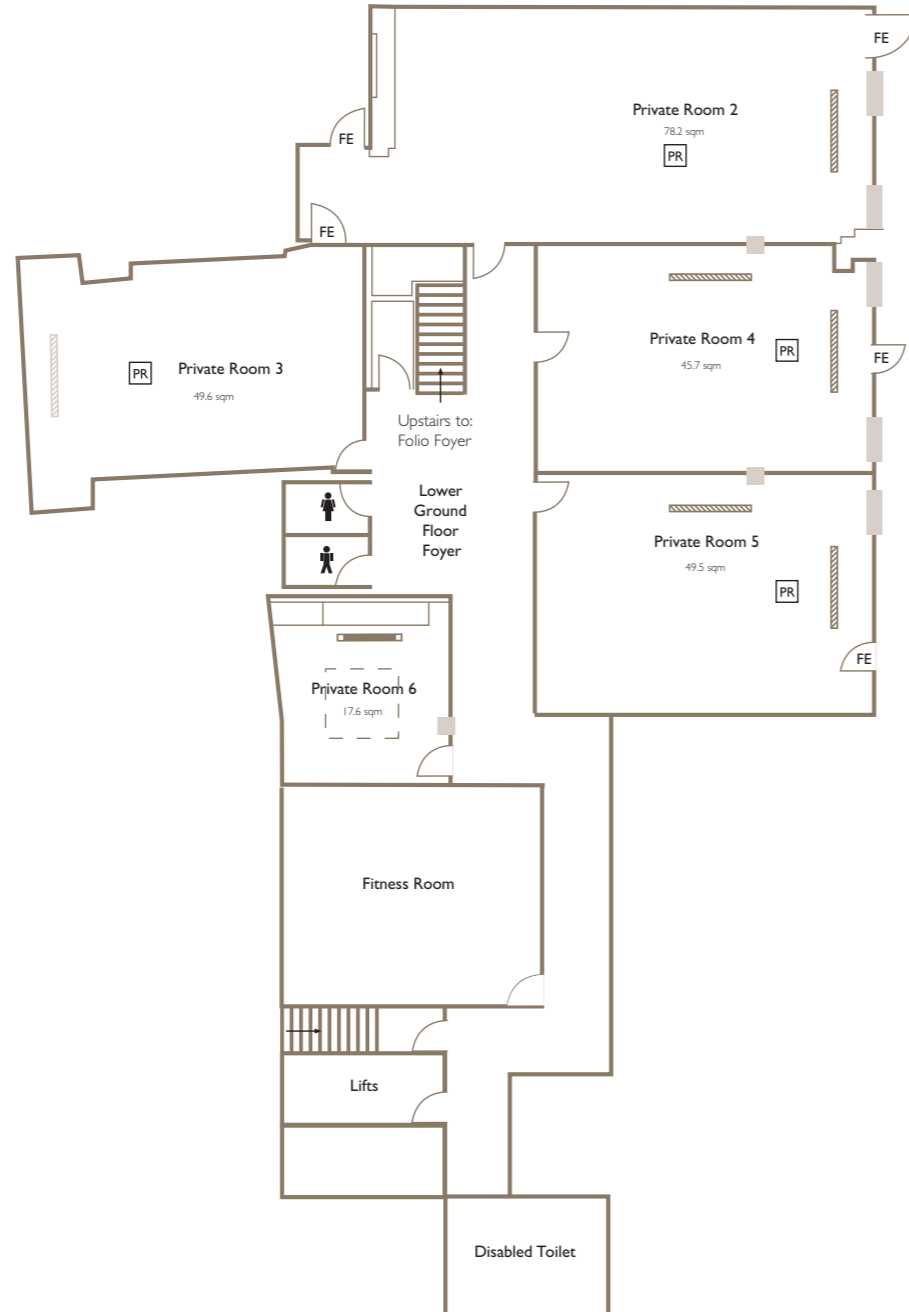
Floor Dimensions

	Area	Length m (ft)	Width m (ft)	Height m (ft)
Folio Room	232 m ² (2496 ft ²)	23.2 m (76'12")	10 m (32'10")	2.9 m (9'51")
Folio 1 and 2	170 m ² (1829 ft ²)	17 m (55'77")	10 m (32'10")	2.9 m (9'51")
Folio 2 and 3	115 m ² (1237 ft ²)	11.5 m (37'73")	10 m (32'10")	2.9 m (9'51")
Folio 1	117 m ² (1258 ft ²)	11.7 m (38'39")	10 m (32'10")	2.9 m (9'51")
Folio 2	53 m ² (570 ft ²)	5.3 m (17'39")	10 m (32'10")	2.9 m (9'51")
Folio 3	62 m ² (667 ft ²)	6.2 m (20'34")	10 m (32'10")	2.9 m (9'51")
Private Room 1	34 m ² (366 ft ²)	6.3 m (20'67")	5.4 m (17'72")	2.9 m (9'51")
Private Room 2	78.2 m ² (841 ft ²)	12.4 m (40'68")	5 m (16'40")	2.5 m (8'20")
Private Room 3	49.6 m ² (534 ft ²)	9 m (29'53")	5.6 m (18'37")	2.5 m (8'20")
Private Room 4	45.7 m ² (492 ft ²)	8.1 m (26'57")	5.7 m (18'70")	2.5 m (8'20")
Private Room 5	49.5 m ² (533 ft ²)	8.2 m (26'90")	6.1 m (20'01")	2.5 m (8'20")
Private Room 6	17.6 m ² (189 ft ²)	4.4 m (14'44")	4 m (13'12")	2.3 m (7'55")

Lower Ground Floor

All meeting rooms are fully air conditioned and benefit from:

- Complimentary wireless
- Up to 12mbps internet link
- Digital signage
- Dedicated technical support
- Integrated AV touch panel control
- CD, DVD, Blu-Ray, HD, playback
- HD DLP projector and screen or plasma screen
- Digital telephone with loudspeaker
- HDTV broadcasting
- HDMI, DVI, VGA, audio music
- Piped background music
- Data and 13amp sockets



Key

- = Screen
- = LCD TV
- = Ceiling mounted projector
- FE** = Fire exit

Ground Floor

12MBPS Broadband Internet now available

The connection is suitable for all types of events and is exclusively available for our conference guests (on request). Exclusive use ensures superior speed and reliability compared to standard broadband connections.

This type of connection offers a range of possibilities including:

- Video/audio conferencing
- Web casting
- Online training
- Live video streams
- Online meetings with document share
- High definition (HD) streaming
- Secure connectivity
- Private use - connectivity is not shared
- Private wi-fi networks

