



## FLOORPLANS & SPECIFICATIONS



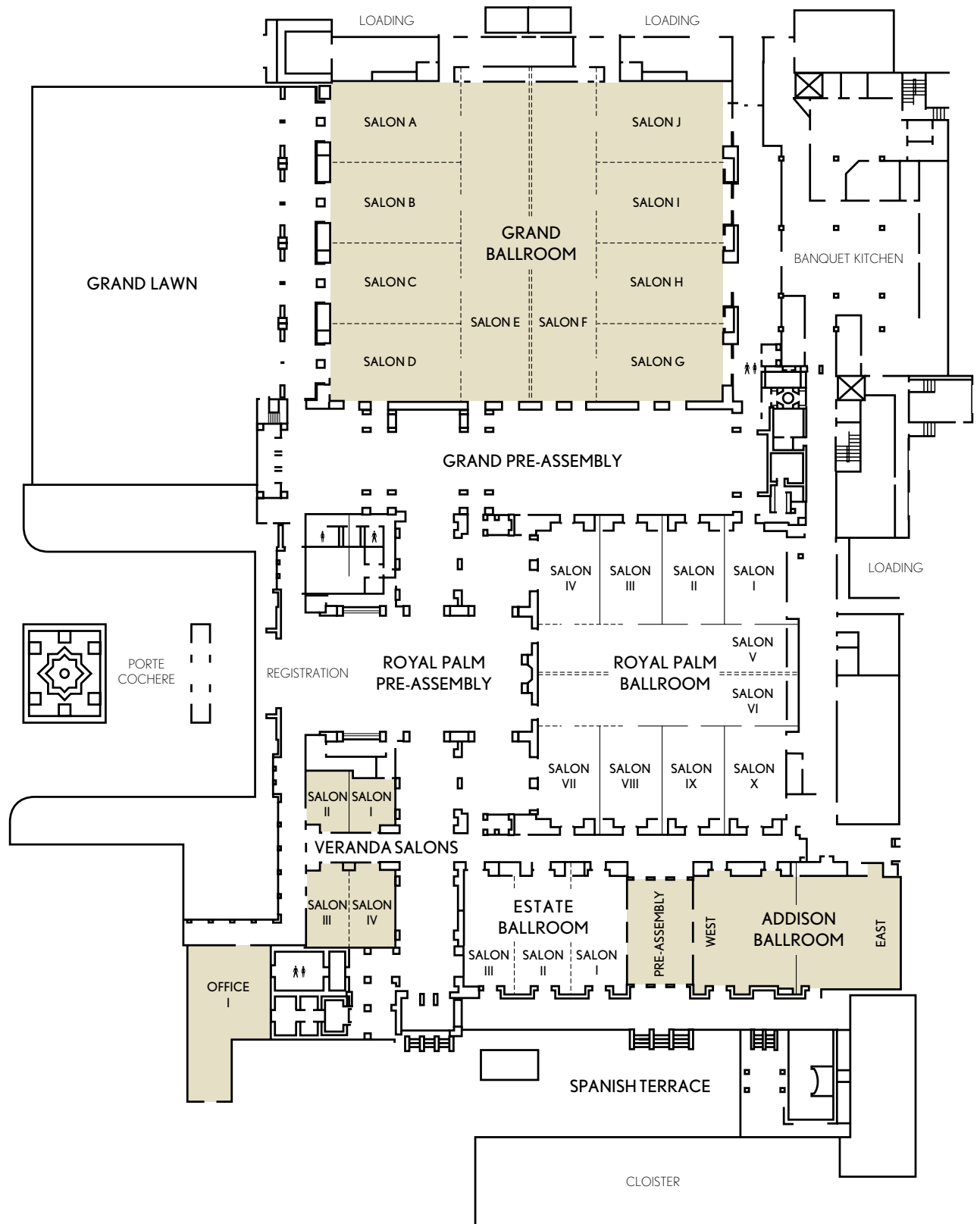
# THE MIZNER CENTER

Inspired by the warmth and grandeur of Mediterranean architecture, this spectacular 128,000-square-foot venue offers 80,000 square feet of flexible meeting space, including four elegant ballrooms for groups from 15 to 1,800. Designed to accommodate a major fund-raising event, new product launch or annual corporate event, the Mizner Center is capably supported by a team of expert conference associates and the latest business technology.

Advanced audio-visual, lighting and climate control systems provide a comfortable, highly functional environment. Pre-assembly areas equipped with computer modeling ensure optimum program flow. Just beyond the well-appointed rooms of the Center, the Grand Lawn and Spanish Terrace open out to create 12,000 square feet of beautiful outdoor event space.

## MEETING ROOM DIMENSIONS

	ROOM DIMENSIONS/ CEILING HEIGHT	SQ. FEET	SQ. METERS	MAXIMUM CAPACITY:			
				THEATER	CLASSROOM	RECEPTION	BANQUET
<b>GRAND BALLROOM</b>	138' x 183' x 22'9"	26,037	2,419	3,200	1,878	2,700	2,280
Salons A-D (each)	34' x 60' x 22'9"	2,158	200	255	148	230	168
Salons E-F (each)	138' x 31' x 22'9"	4,393	408	555	288	450	312
Salons G-J (each)	34' x 60' x 22'9"	2,158	200	255	148	230	168
Grand Pre- Assembly	45' x 206' x 22'	10,200	948	–	–	–	–
<b>ROYAL PALM BALLROOM</b>	126' x 115' x 18'	15,027	1,396	1,800	1,000	1,579	1,260
Salons I-IV (each)	41' x 29' x 18'	1,235	115	132	77	120	72
Salons V-VI (each)	22' x 115' x 18'	2,506	233	280	152	263	216
Salons VII-X (each)	41' x 29' x 18'	1,235	115	132	77	120	72
Royal Palm Pre-Assembly	122' x 31' x 18'	3,852	358	–	–	–	–
<b>ADDISON BALLROOM</b>	48' x 95' x 14'9"	4,726	439	520	300	425	384
East	48' x 48' x 14'9"	2,300	214	264	134	200	192
West	48' x 47' x 14'9"	2,550	237	286	140	200	180
Addison Pre-Assembly	45' x 30' x 14'3"	1,375	128	–	–	–	–
<b>ESTATE BALLROOM</b>	48' x 76' x 14'9"	3,895	362	407	228	375	288
Salon I	48' x 26' x 14'9"	1,355	126	144	64	125	96
Salon II	48' x 26' x 14'9"	1,353	126	144	72	125	96
Salon III	48' x 23' x 14'9"	1,187	110	136	68	115	96
<b>VERANDA SALONS</b>							
Salon I	21' x 22' x 14'9"	465	43	36	24	40	36
Salon II	19' x 25' x 14'9"	504	47	36	28	40	36
Salon III	19' x 35' x 14'9"	758	70	56	30	70	60
Salon IV	21' x 35' x 14'9"	704	65	56	30	70	60
Office I	40' x 40' x 12'	1,600	149	–	–	–	–
<b>Outdoor Areas</b>							
Spanish Terrace	136' x 21'	3,000	279	–	–	250	156
Grand Lawn	95' x 92'	9,000	837	–	–	1,000	756



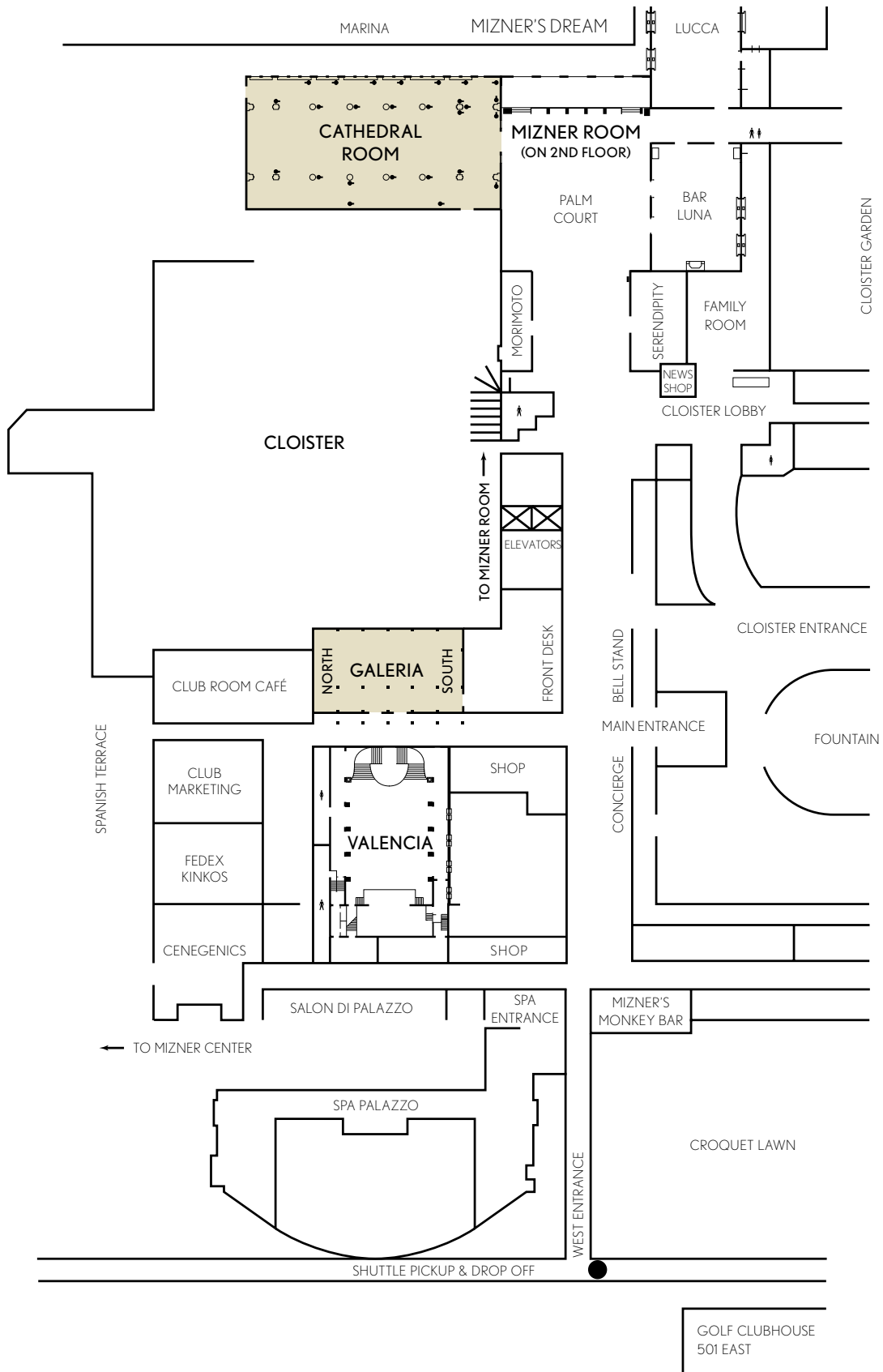
# THE MIZNER CENTER

# THE CLOISTER

Suffused with vintage elegance and charm, the Resort's original signature building, The Cloister, is home to some of our most unique indoor and outdoor meeting venues, including the Cathedral dining room and Cloister Garden. While historic in nature and design, these rooms feature state-of-the-art audio/visual capabilities, a wide array of catering options and the attentive, yet unobtrusive, service for which the Resort is known.

## MEETING ROOM DIMENSIONS

	ROOM DIMENSIONS/ CEILING HEIGHT	SQ. FEET	SQ. METERS	MAXIMUM CAPACITY:				
				THEATER	CLASSROOM	RECEPTION	BANQUET	CONFERENCE
Cathedral	102' x 59' x 11'	6,045	562	300	100	400	336	–
Cloister Garden	–	–	–	–	–	300	180	–
Valencia (Stage)	55' x 51' x 16'	2,805	261	300	152	300	180	46
Galeria	75' x 41' x 9'	3,075	286	259	134	250	180	64
Galeria North	41' x 36' x 9'	1,476	137	112	52	100	84	24
Galeria South	41' x 36' x 9'	1,599	149	112	63	100	96	24
Mizner Room	54' x 37' x 10'	1,944	181	230	128	200	144	46



GOLF CLUBHOUSE  
501 EAST

# THE CLOISTER

# THE GREAT HALL CENTER

The Great Hall Center offers 12 versatile function rooms, all proportioned to allow flexibility in scale, seating and configuration – a dinner for 25 or a creative presentation for 1,200. Great Hall features a dramatic floor-to-ceiling glass wall with stunning views of the Intracoastal Waterway. Centrally located near the Cloister and the Tower, the Great Hall offers a superb meeting, learning and leisure environment for a variety of group functions.

## MEETING ROOM DIMENSIONS

	ROOM DIMENSIONS/ CEILING HEIGHT	SQ. FEET	SQ. METERS	MAXIMUM CAPACITY:				
				THEATER	CLASSROOM	RECEPTION	BANQUET	CONFERENCE
Great Hall (Stage)	144' x 95' x 23'	13,680	1,271	1,368	784	1,500	936	–
Great Hall South (Stage)	96' x 95' x 23'	9,120	847	855	508	800	612	–
Great Hall North	95' x 48' x 23'	4,560	424	488	288	400	288	60*
Granada Room	92' x 35' x 10'	3,220	299	336	220	250	276	60*
Granada Rooms A-B-C-D (each)	35' x 23' x 10'	805	75	70	50	75	60	30
Barcelona Room	92' x 35' x 10'	3,220	299	336	220	250	267	60*
Barcelona Rooms A-B-C-D (each)	35' x 23' x 10'	805	75	70	50	75	60	30
Seville	40' x 37' x 10'	1,470	137	198	80	150	108	38
Madrid	40' x 37' x 10'	1,470	137	198	80	150	108	38
Camino Hall	96' x 48' x 13'	4,608	428	540	288	700	360	88
Camino Foyer	70' x 25' x 11'	1,758	163	–	–	500	–	–
Garden Pool	–	–	–	–	–	1,200	720	–
Camino Garden	–	–	–	–	–	275	180	–
Gazebo Garden	–	–	–	–	–	1,000	480	–

*\*Recommend hollow square or rectangular set up*



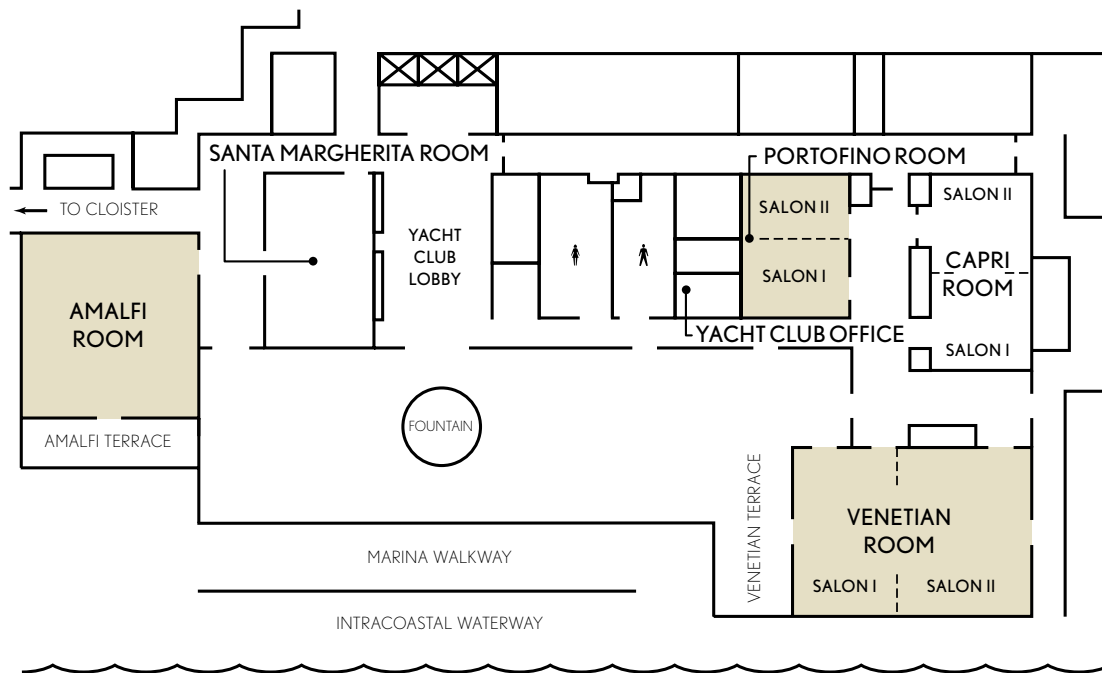
THE GREAT HALL CENTER

# THE YACHT CLUB

Home to some of the Resort's most elegant meeting rooms, the Yacht Club's lavish décor includes Mediterranean art and antiques, Venetian chandeliers and rich European fabrics. An exceptional venue for executive events, Yacht Club meeting rooms overlook a classic terrace and fountain, inspired by the great palaces of Venice, and many feature Intracoastal views.

## MEETING ROOM DIMENSIONS

	ROOM DIMENSIONS/ CEILING HEIGHT	SQ. FEET	SQ. METERS	MAXIMUM CAPACITY:				
				THEATER	CLASSROOM	RECEPTION	BANQUET	CONFERENCE
Amalfi Room	43' x 44' x 13'6"	1,935	180	177	80	278	132	43
CAPRI ROOM		1212	113	120	56	180	96	40
Salon I	24' x 24' x 13'6"	606	56	60	24	90	48	16
Salon II	24' x 24' x 13'6"	606	56	60	24	90	48	16
PORTOFINO ROOM	35' x 25' x 13'8"	890	83	89	48	130	60	24
Salon I	17' x 25' x 13'8"	468	43	47	24	65	24	16
Salon II	17' x 25' x 13'8"	442	41	36	21	65	24	16
Santa Margherita Room	48' x 27' x 13'8"	1,113	103	130	66	161	72	38
VENETIAN ROOM	41' x 58' x 13'8"	2,230	207	288	148	336	168	48
Salon I	24' x 24' x 13'6"	1,115	104	120	75	108	72	30
Salon II	24' x 24' x 13'6"	1,115	104	120	70	108	72	30
Yacht Club Office	15' x 10' x 10'	150	14	-	-	-	-	-



## THE YACHT CLUB

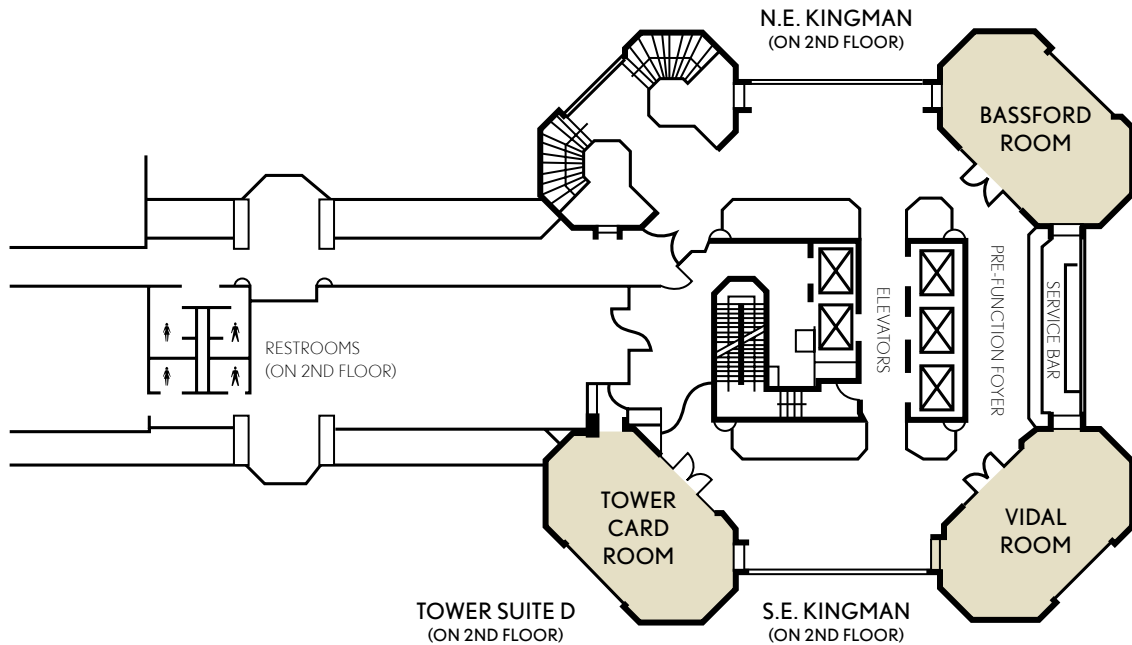


# THE TOWER

Attend or conduct your meeting in a relaxing atmosphere at the Tower, with first and second floor meeting rooms overlooking the Intracoastal Waterway and the Resort's gardens. The Tower is one of the Resort's most popular locations for 50 people or less.

## MEETING ROOM DIMENSIONS

	ROOM DIMENSIONS/ CEILING HEIGHT	SQ. FEET	SQ. METERS	MAXIMUM CAPACITY:				
				THEATER	CLASSROOM	RECEPTION	BANQUET	CONFERENCE
Vidal Room	32' x 18' x 10"	576	54	50	28	50	36	26
Northeast Kingman	32' x 18' x 10"	576	54	50	28	50	36	26
Bassford Room	32' x 18' x 10"	576	54	50	28	50	36	26
Southeast Kingman	32' x 18' x 10"	576	54	50	28	50	36	26
Tower Card Room	32' x 18' x 10"	576	54	50	28	50	36	26
Tower Suite D	32' x 18' x 10"	576	54	50	28	50	36	26



## THE TOWER

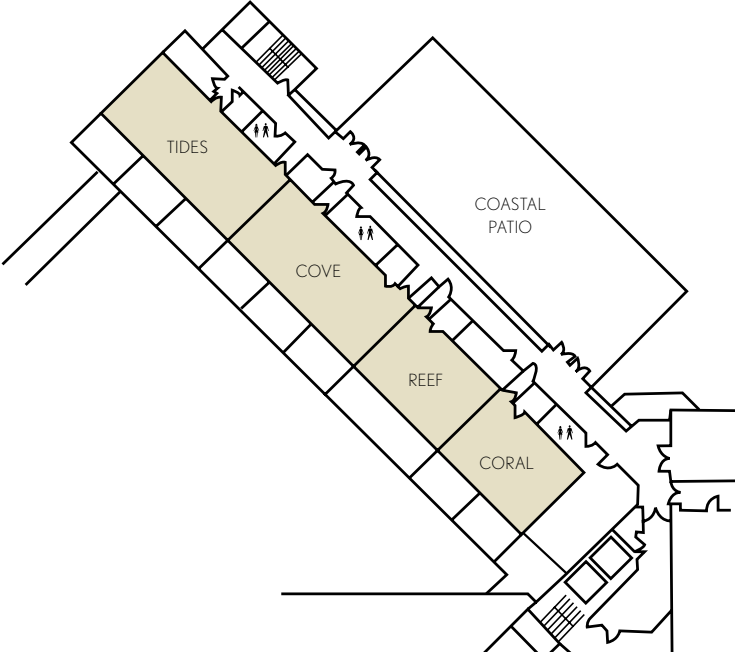
# THE BOCA BEACH CLUB

Let the fresh, modern elegance and lively, youthful spirit of the Beach Club provide the setting for your next meeting or event. Handsome boardrooms are perfect for an intimate board of directors' retreat or executive conference. Choose to host your gala event beneath sparkling chandeliers in the Dunes Ballroom and enjoy your cocktail reception on the ocean-view terrace. Lush landscaped areas surrounding the Beach Club's three pools are ideal for festive outdoor parties and special events.

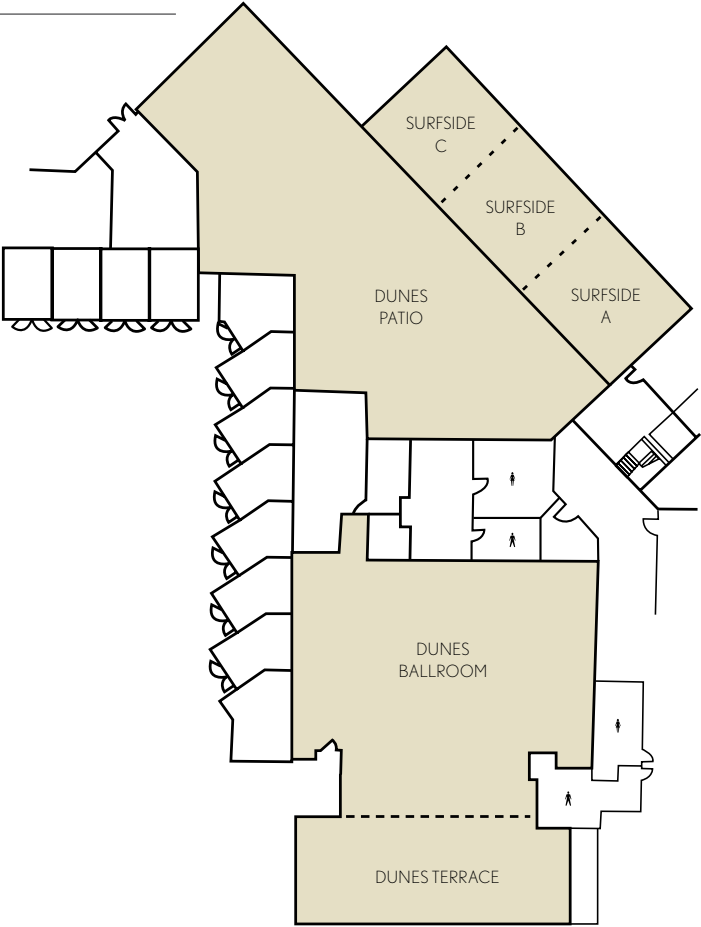
## MEETING ROOM DIMENSIONS

	ROOM DIMENSIONS/ CEILING HEIGHT	SQ. FEET	SQ. METERS	MAXIMUM CAPACITY:				
				THEATER	CLASSROOM	RECEPTION	BANQUET	CONFERENCE
The Dunes Ballroom	75' x 60' x 8'9"	4,575	425	350	180	500	310	64
The Dunes Terrace	70' x 28'6" x 8'6"	1,907	177	–	–	175	–	–
The Dunes Patio	–	3,177	295	–	–	230	–	–
		1,364 (covered)						
Surfside A	28' x 33' x 8.6'	879	82	74	30	90	60	24
Surfside B	28' x 30' x 8.6'	786	73	64	30	80	50	24
Surfside C	28' x 26' x 8.6'	706	66	54	24	70	40	16
Surfside AB	63' x 28'	1,655	154	136	68	175	110	56
Surfside BC	56' x 28' x 8'6"	1,492	139	112	60	150	90	48
Surfside ABC	89' x 28' x 8'6"	2,370	220	189	104	230	150	80
Coral	29' x 21' x 8'6"	626	58	56	27	75	40	20
Reef	29' x 21' x 8'6"	622	58	56	32	75	40	20
Cove	44' x 21' x 8'6"	938	87	97	48	110	70	32

SECOND FLOOR



FIRST FLOOR



BOCA BEACH CLUB