

INTRODUCING



# HOTEL EFFIE SANDESTIN

SOUTHERN. COASTAL. APPROACHABLE. ELEGANT.



Our beautiful full-service 250-room hotel, located on the banks of the Choctawhatchee Bay in Northwest Florida, is nestled in the world-famous Sandestin Golf and Beach Resort adjacent to the Baytowne Conference Center. Hotel Effie Sandestin is the first new development within the resort in over four years. Construction on the four-star hotel has commenced with a projected completion date of Summer 2020.



HOTEL EFFIE  
SANDESTIN



**Artist conceptual rendering.** Any renderings and depictions in this brochure are conceptual only and are for the convenience of reference. They should not be relied upon as representations, express or implied, of the final detail of the hotel. The Developer expressly reserves the right to make modifications, revisions, and changes it deems desirable in its sole and absolute discretion. Dimensions and square footage are approximate and may vary with actual construction.

EXTERIOR ELEVATION  
EVENING, SOUTH





HOTEL EFFIE  
SANDESTIN



**Artist conceptual rendering.** Any renderings and depictions in this brochure are conceptual only and are for the convenience of reference. They should not be relied upon as representations, express or implied, of the final detail of the hotel. The Developer expressly reserves the right to make modifications, revisions, and changes it deems desirable in its sole and absolute discretion. Dimensions and square footage are approximate and may vary with actual construction.

EXTERIOR NORTHEAST  
PERSPECTIVE





HOTEL EFFIE  
SANDESTIN



**Artist conceptual rendering.** Any renderings and depictions in this brochure are conceptual only and are for the convenience of reference. They should not be relied upon as representations, express or implied, of the final detail of the hotel. The Developer expressly reserves the right to make modifications, revisions, and changes it deems desirable in its sole and absolute discretion. Dimensions and square footage are approximate and may vary with actual construction.

INTERIOR GUEST  
CHECK-IN





Nestled on the banks of the Choctawhatchee Bay inside the gates of Sandestin Golf and Beach Resort, Hotel Effie Sandestin is an extraordinary treasure. Coastal charm abounds as guests will immediately experience southern elegance with the hotel's integration of thoughtful design with exquisite details.

Purposeful appointment of interior details will further enhance the guest experience. The hotel's relaxing lobby lounge, with seating for 40, offers guests a menu of assorted small bites and beverages. Guests will also have access to the hotel's full-service concierge.

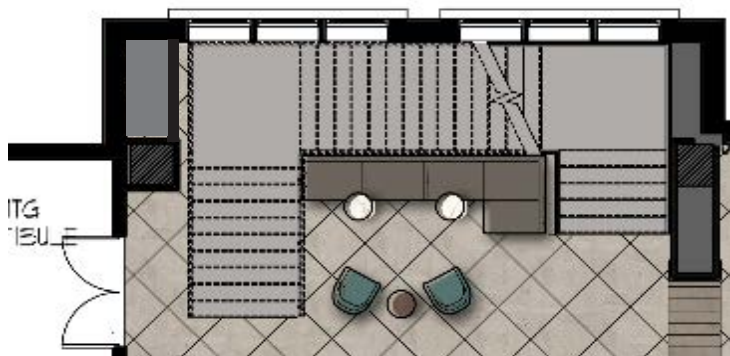


**Artist conceptual rendering.** Any renderings and depictions in this brochure are conceptual only and are for the convenience of reference. They should not be relied upon as representations, express or implied, of the final detail of the hotel. The Developer expressly reserves the right to make modifications, revisions, and changes it deems desirable in its sole and absolute discretion. Dimensions and square footage are approximate and may vary with actual construction.

## INTERIOR GUEST CHECK-IN



Taking inspiration from the locale, sandy limestone floors and a palette of natural textures form the neutral envelope while bold chartreuse highlights interior features. Movement in the floor patterning echoes dunes and water upon shore grounded by substantial cleft-face stone slab walls. Reflective, illuminated elements, like the feature wall at reception, play against the textured mix of materials in the front desks, topped with lanterns. Light fixtures inspired by naval lamps are large and open, elevated with crystal and glass accents. The Grand Staircase provides a striking entrance to the second-floor function space.



**Artist conceptual rendering.** Any renderings and depictions in this brochure are conceptual only and are for the convenience of reference. They should not be relied upon as representations, express or implied, of the final detail of the hotel. The Developer expressly reserves the right to make modifications, revisions, and changes it deems desirable in its sole and absolute discretion. Dimensions and square footage are approximate and may vary with actual construction.

## INTERIOR GRAND STAIRCASE

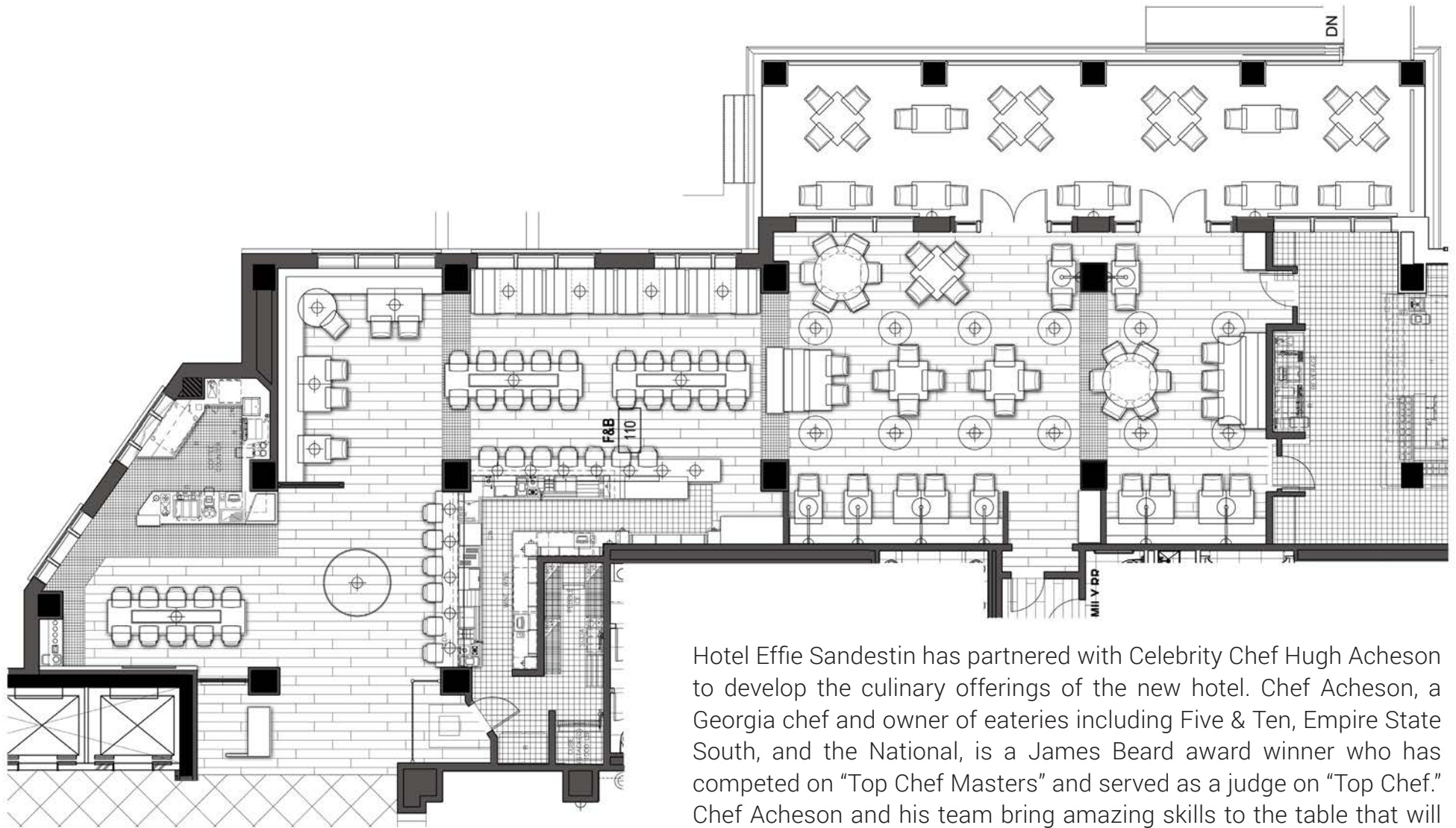




**Artist conceptual rendering.** Any renderings and depictions in this brochure are conceptual only and are for the convenience of reference. They should not be relied upon as representations, express or implied, of the final detail of the hotel. The Developer expressly reserves the right to make modifications, revisions, and changes it deems desirable in its sole and absolute discretion. Dimensions and square footage are approximate and may vary with actual construction.

## INTERIOR BAR & RESTAURANT





Hotel Effie Sandestin has partnered with Celebrity Chef Hugh Acheson to develop the culinary offerings of the new hotel. Chef Acheson, a Georgia chef and owner of eateries including Five & Ten, Empire State South, and the National, is a James Beard award winner who has competed on “Top Chef Masters” and served as a judge on “Top Chef.” Chef Acheson and his team bring amazing skills to the table that will heighten the travel experience for hotel guests. The hotel’s restaurant will welcome 103 guests in total while presenting food based on the local flavors of the Gulf Coast.



**Artist conceptual rendering.** Any renderings and depictions in this brochure are conceptual only and are for the convenience of reference. They should not be relied upon as representations, express or implied, of the final detail of the hotel. The Developer expressly reserves the right to make modifications, revisions, and changes it deems desirable in its sole and absolute discretion. Dimensions and square footage are approximate and may vary with actual construction.

## INTERIOR BAR & RESTAURANT





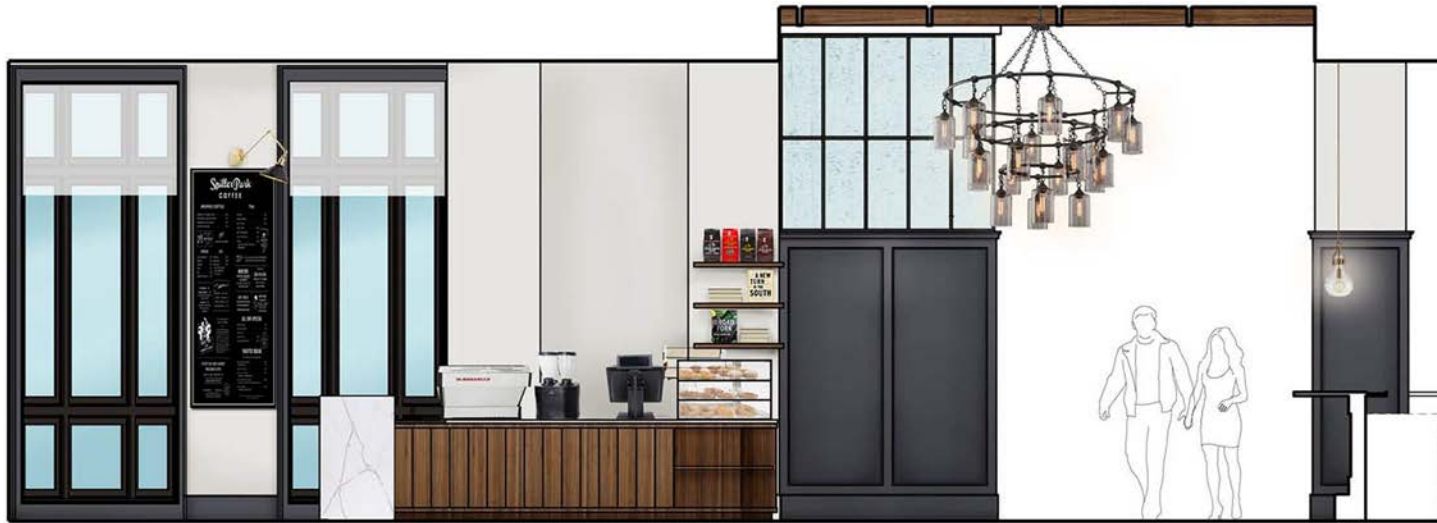
HOTEL EFFIE  
SANDESTIN



**Artist conceptual rendering.** Any renderings and depictions in this brochure are conceptual only and are for the convenience of reference. They should not be relied upon as representations, express or implied, of the final detail of the hotel. The Developer expressly reserves the right to make modifications, revisions, and changes it deems desirable in its sole and absolute discretion. Dimensions and square footage are approximate and may vary with actual construction.

INTERIOR  
COFFEE BAR





Linear grained grey wood continues as a contemporary framework throughout the bar and restaurant and is paired with classic linen and mixed maritime metals. The coffee bar will be curated by Chef Hugh Acheson presenting an array of coffee and tea blends. Gathering style seating provides for easy meetings and get-togethers of 2 to 10+ people.



**Artist conceptual rendering.** Any renderings and depictions in this brochure are conceptual only and are for the convenience of reference. They should not be relied upon as representations, express or implied, of the final detail of the hotel. The Developer expressly reserves the right to make modifications, revisions, and changes it deems desirable in its sole and absolute discretion. Dimensions and square footage are approximate and may vary with actual construction.

## INTERIOR BAR & RESTAURANT





HOTEL EFFIE  
SANDESTIN



**Artist conceptual rendering.** Any renderings and depictions in this brochure are conceptual only and are for the convenience of reference. They should not be relied upon as representations, express or implied, of the final detail of the hotel. The Developer expressly reserves the right to make modifications, revisions, and changes it deems desirable in its sole and absolute discretion. Dimensions and square footage are approximate and may vary with actual construction.

INTERIOR  
LOBBY BAR



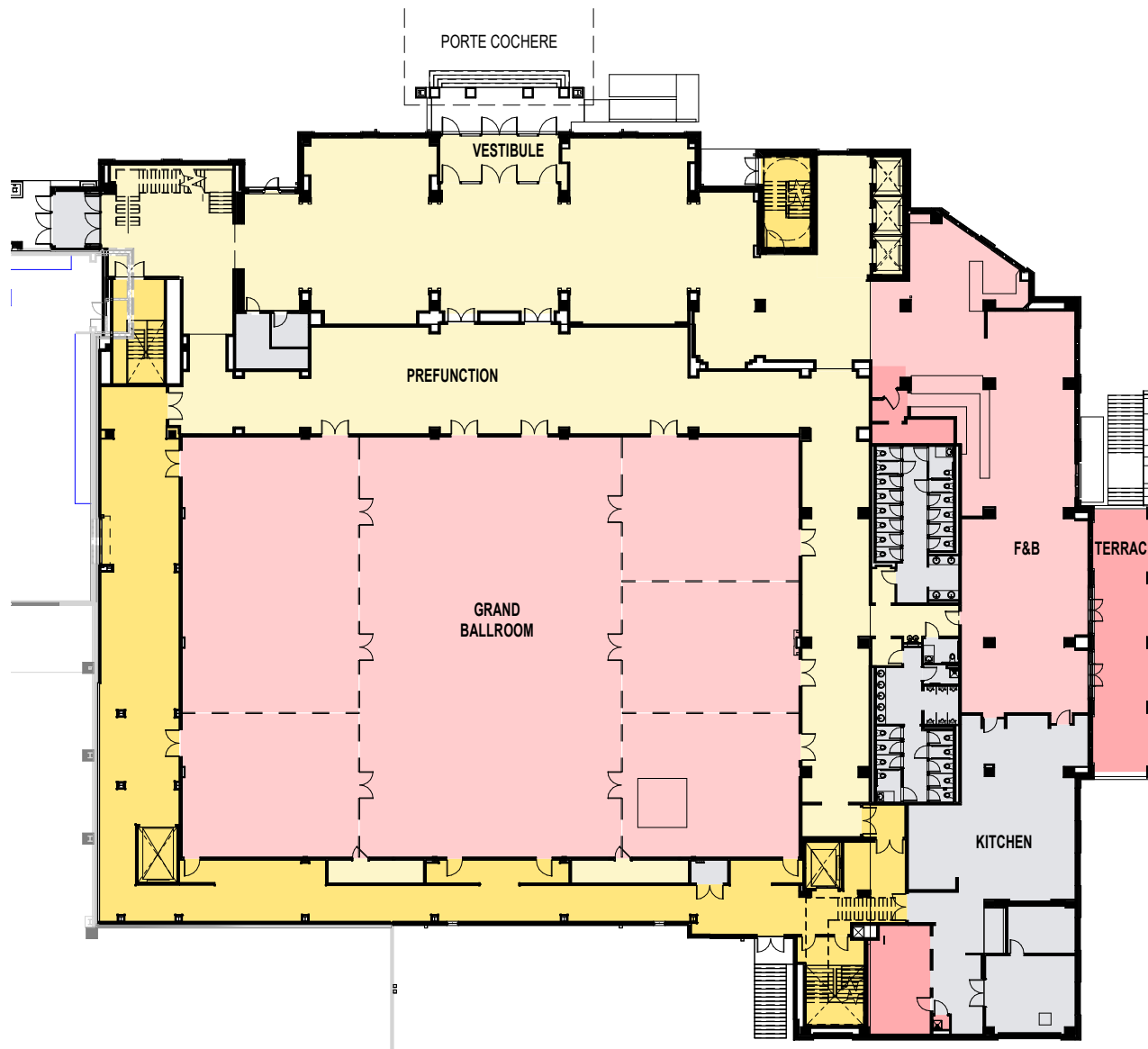


  
HOTEL EFFIE  
SANDESTIN



**Artist conceptual rendering.** Any renderings and depictions in this brochure are conceptual only and are for the convenience of reference. They should not be relied upon as representations, express or implied, of the final detail of the hotel. The Developer expressly reserves the right to make modifications, revisions, and changes it deems desirable in its sole and absolute discretion. Dimensions and square footage are approximate and may vary with actual construction.

GRAND  
BALLROOM



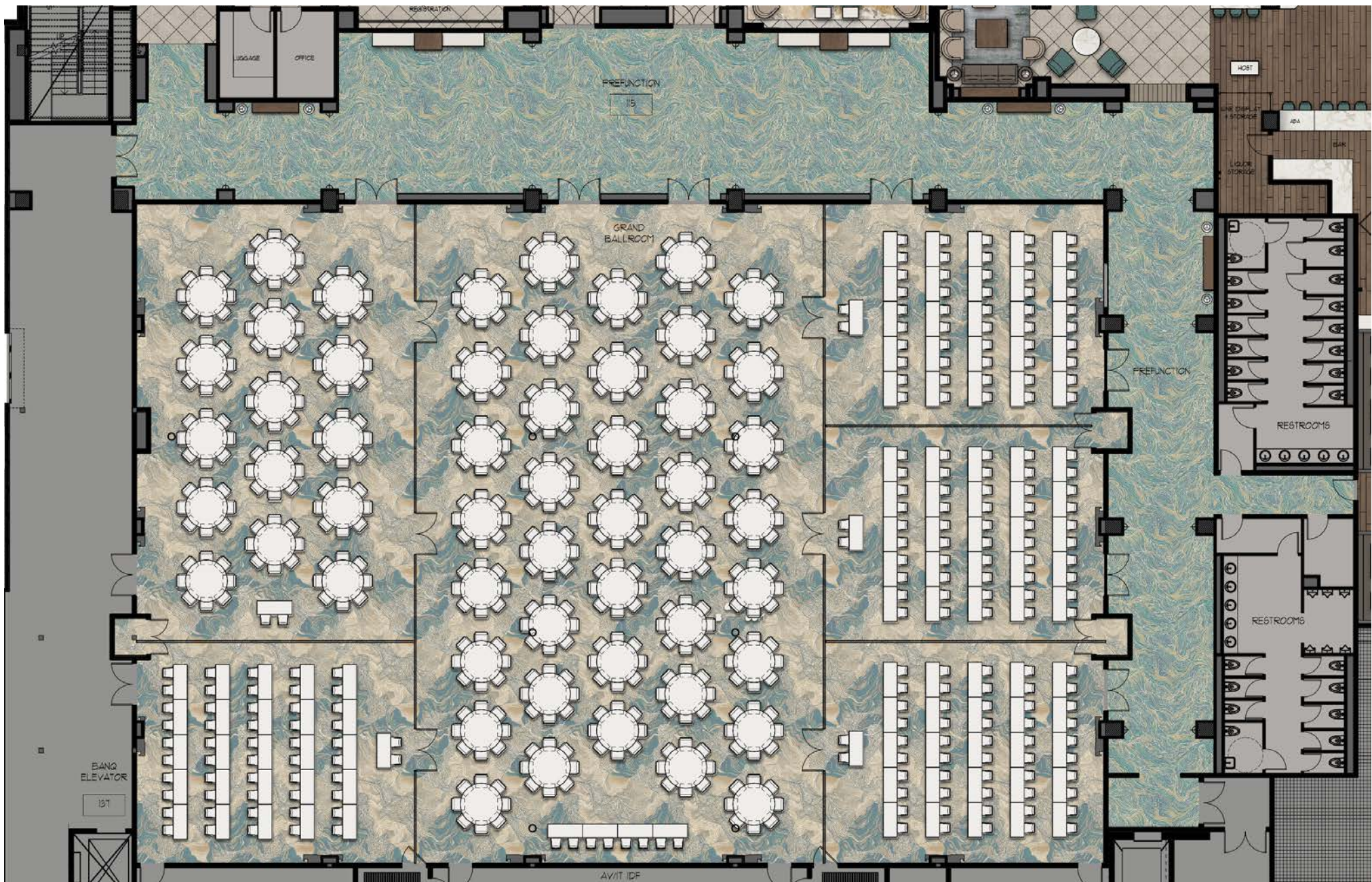
Hotel Effie Sandestin will include 20,000+ square feet of meeting space and feature a 13,000 square foot ballroom which is divisible by six rooms ranging from 1,200 to 5,500 square feet. The hotel's meeting space, contiguous to the 30,000+ square feet of existing meeting space at Baytowne Conference Center, will allow Sandestin to accommodate upwards of 800 participants or multiple group. The Baytowne Conference Center will be fully renovated as part of the new hotel project with similar finishes throughout.



**Artist conceptual rendering.** Any renderings and depictions in this brochure are conceptual only and are for the convenience of reference. They should not be relied upon as representations, express or implied, of the final detail of the hotel. The Developer expressly reserves the right to make modifications, revisions, and changes it deems desirable in its sole and absolute discretion. Dimensions and square footage are approximate and may vary with actual construction.

## FLOOR PLAN LOBBY LEVEL





**Artist conceptual rendering.** Any renderings and depictions in this brochure are conceptual only and are for the convenience of reference. They should not be relied upon as representations, express or implied, of the final detail of the hotel. The Developer expressly reserves the right to make modifications, revisions, and changes it deems desirable in its sole and absolute discretion. Dimensions and square footage are approximate and may vary with actual construction.

## FLOOR PLAN LOBBY LEVEL

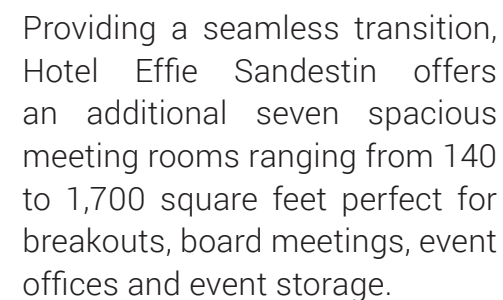




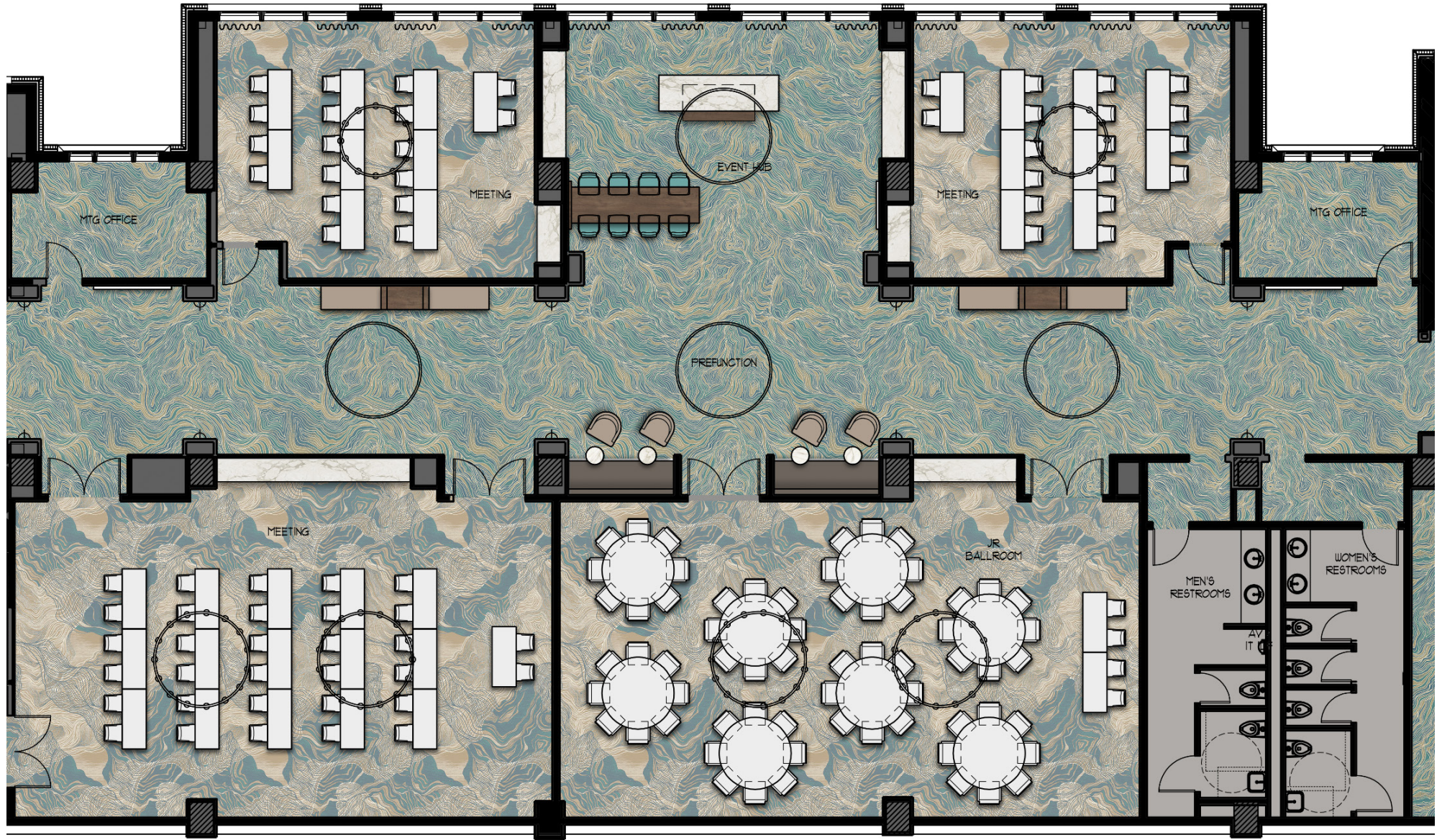
**Artist conceptual rendering.** Any renderings and depictions in this brochure are conceptual only and are for the convenience of reference. They should not be relied upon as representations, express or implied, of the final detail of the hotel. The Developer expressly reserves the right to make modifications, revisions, and changes it deems desirable in its sole and absolute discretion. Dimensions and square footage are approximate and may vary with actual construction.

MEETING  
ROOM









**Artist conceptual rendering.** Any renderings and depictions in this brochure are conceptual only and are for the convenience of reference. They should not be relied upon as representations, express or implied, of the final detail of the hotel. The Developer expressly reserves the right to make modifications, revisions, and changes it deems desirable in its sole and absolute discretion. Dimensions and square footage are approximate and may vary with actual construction.

## FLOOR PLAN SECOND LEVEL



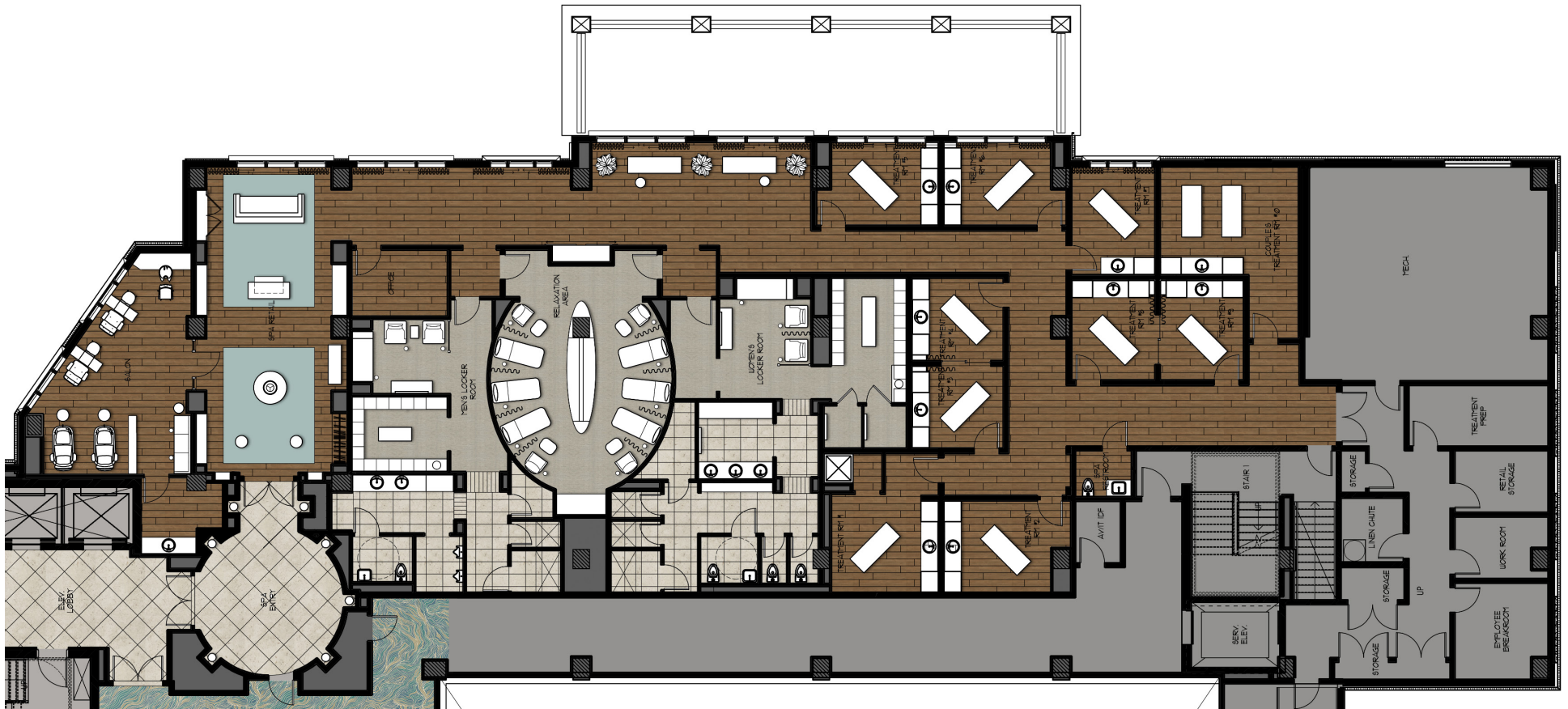


HOTEL EFFIE  
SANDESTIN



**Artist conceptual rendering.** Any renderings and depictions in this brochure are conceptual only and are for the convenience of reference. They should not be relied upon as representations, express or implied, of the final detail of the hotel. The Developer expressly reserves the right to make modifications, revisions, and changes it deems desirable in its sole and absolute discretion. Dimensions and square footage are approximate and may vary with actual construction.

INTERIOR  
SPA



Hotel Effie Sandestin Spa will offer a wide assortment of spa treatments designed to relax and rejuvenate body, mind and spirit with soothing treatments designed to bring out your best. The new spa offers ten treatment rooms, one couples' treatment room, four flexible rooms that can be combined to make two

additional couples rooms, a coed relaxation lounge with private men's and women's relaxation lounges inside the locker rooms. Beauty, comfort and personalized attention combine to create a memorable experience.



**Artist conceptual rendering.** Any renderings and depictions in this brochure are conceptual only and are for the convenience of reference. They should not be relied upon as representations, express or implied, of the final detail of the hotel. The Developer expressly reserves the right to make modifications, revisions, and changes it deems desirable in its sole and absolute discretion. Dimensions and square footage are approximate and may vary with actual construction.

INTERIOR  
SPA





**Artist conceptual rendering.** Any renderings and depictions in this brochure are conceptual only and are for the convenience of reference. They should not be relied upon as representations, express or implied, of the final detail of the hotel. The Developer expressly reserves the right to make modifications, revisions, and changes it deems desirable in its sole and absolute discretion. Dimensions and square footage are approximate and may vary with actual construction.

ROOM PLAN  
KING



Fully-appointed guest rooms will welcome guests with a complement of amenities including a mini-fridge, personal coffee maker, luxurious robe and slippers, full length mirror with plug-in, fully lit bathroom mirror, bathroom amenities, smart 46

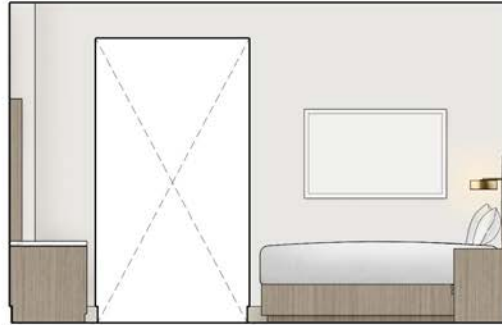
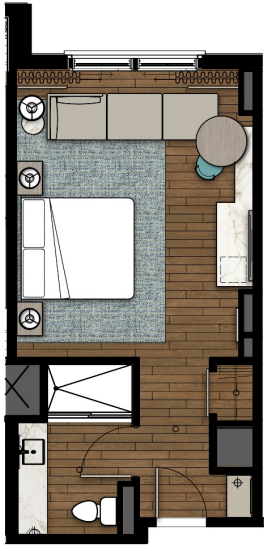
inch televisions and complimentary bottled water. The hotel will also offer Extended King Rooms, King Suites, King Executive Suites and a spacious Presidential Suite.



**Artist conceptual rendering.** Any renderings and depictions in this brochure are conceptual only and are for the convenience of reference. They should not be relied upon as representations, express or implied, of the final detail of the hotel. The Developer expressly reserves the right to make modifications, revisions, and changes it deems desirable in its sole and absolute discretion. Dimensions and square footage are approximate and may vary with actual construction.

ROOM PLAN  
KING





**Artist conceptual rendering.** Any renderings and depictions in this brochure are conceptual only and are for the convenience of reference. They should not be relied upon as representations, express or implied, of the final detail of the hotel. The Developer expressly reserves the right to make modifications, revisions, and changes it deems desirable in its sole and absolute discretion. Dimensions and square footage are approximate and may vary with actual construction.

# ROOM PLAN KING



HOTEL EFFIE  
SANDESTIN



**Artist conceptual rendering.** Any renderings and depictions in this brochure are conceptual only and are for the convenience of reference. They should not be relied upon as representations, express or implied, of the final detail of the hotel. The Developer expressly reserves the right to make modifications, revisions, and changes it deems desirable in its sole and absolute discretion. Dimensions and square footage are approximate and may vary with actual construction.

ROOM PLAN  
QUEEN





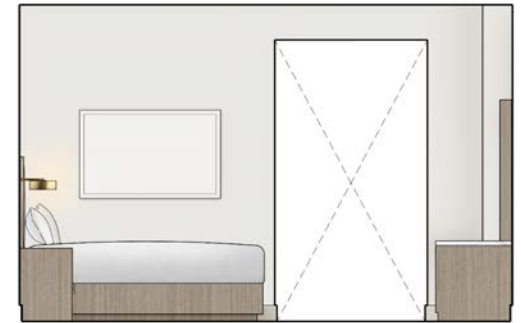
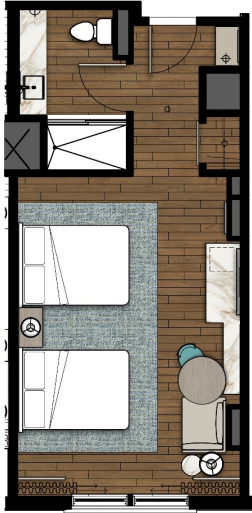
Fully-appointed queen rooms are also available offering two queen beds and a full complement of amenities. Queen suites along with connecting room options will be available

throughout the hotel. Many rooms include balconies with panoramic views of the Choctawhatchee Bay and Sandestin Golf and Beach Resort.



**Artist conceptual rendering.** Any renderings and depictions in this brochure are conceptual only and are for the convenience of reference. They should not be relied upon as representations, express or implied, of the final detail of the hotel. The Developer expressly reserves the right to make modifications, revisions, and changes it deems desirable in its sole and absolute discretion. Dimensions and square footage are approximate and may vary with actual construction.

ROOM PLAN  
QUEEN



**Artist conceptual rendering.** Any renderings and depictions in this brochure are conceptual only and are for the convenience of reference. They should not be relied upon as representations, express or implied, of the final detail of the hotel. The Developer expressly reserves the right to make modifications, revisions, and changes it deems desirable in its sole and absolute discretion. Dimensions and square footage are approximate and may vary with actual construction.

# ROOM PLAN QUEEN





HOTEL EFFIE  
SANDESTIN



**Artist conceptual rendering.** Any renderings and depictions in this brochure are conceptual only and are for the convenience of reference. They should not be relied upon as representations, express or implied, of the final detail of the hotel. The Developer expressly reserves the right to make modifications, revisions, and changes it deems desirable in its sole and absolute discretion. Dimensions and square footage are approximate and may vary with actual construction.

ROOM PLAN  
KING SUITE



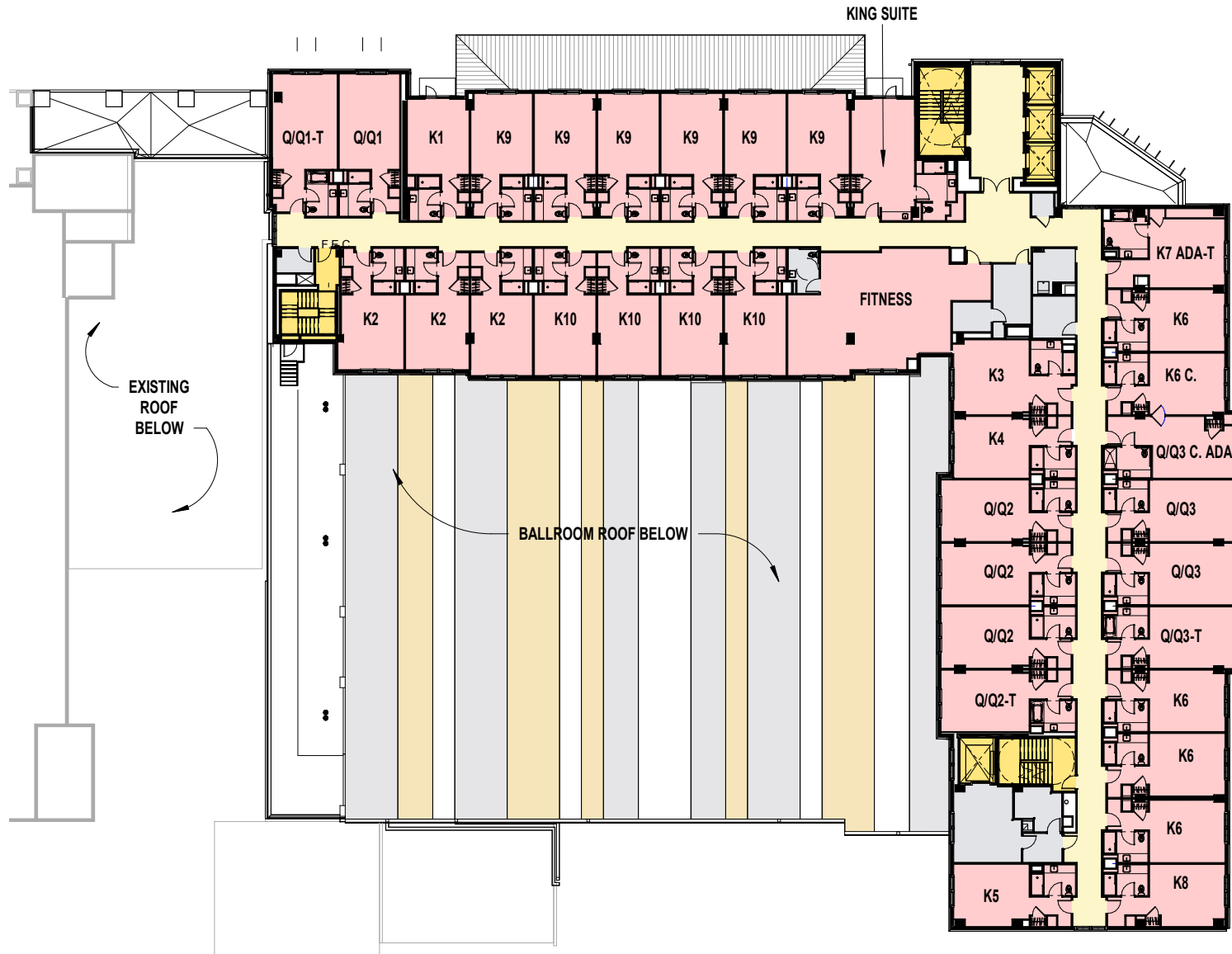
HOTEL EFFIE  
SANDESTIN



**Artist conceptual rendering.** Any renderings and depictions in this brochure are conceptual only and are for the convenience of reference. They should not be relied upon as representations, express or implied, of the final detail of the hotel. The Developer expressly reserves the right to make modifications, revisions, and changes it deems desirable in its sole and absolute discretion. Dimensions and square footage are approximate and may vary with actual construction.

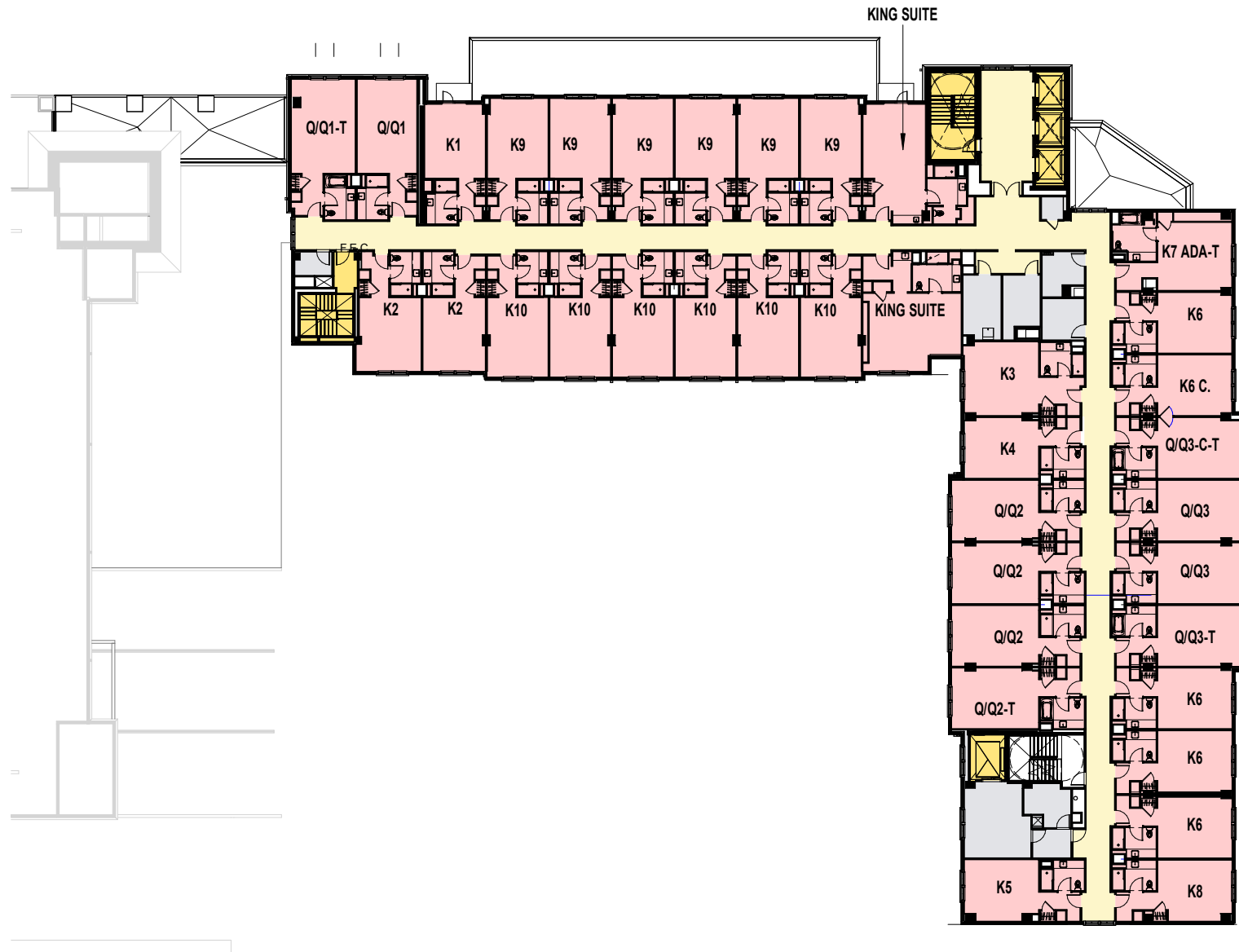
GUEST  
BATHROOM





**Artist conceptual rendering.** Any renderings and depictions in this brochure are conceptual only and are for the convenience of reference. They should not be relied upon as representations, express or implied, of the final detail of the hotel. The Developer expressly reserves the right to make modifications, revisions, and changes it deems desirable in its sole and absolute discretion. Dimensions and square footage are approximate and may vary with actual construction.

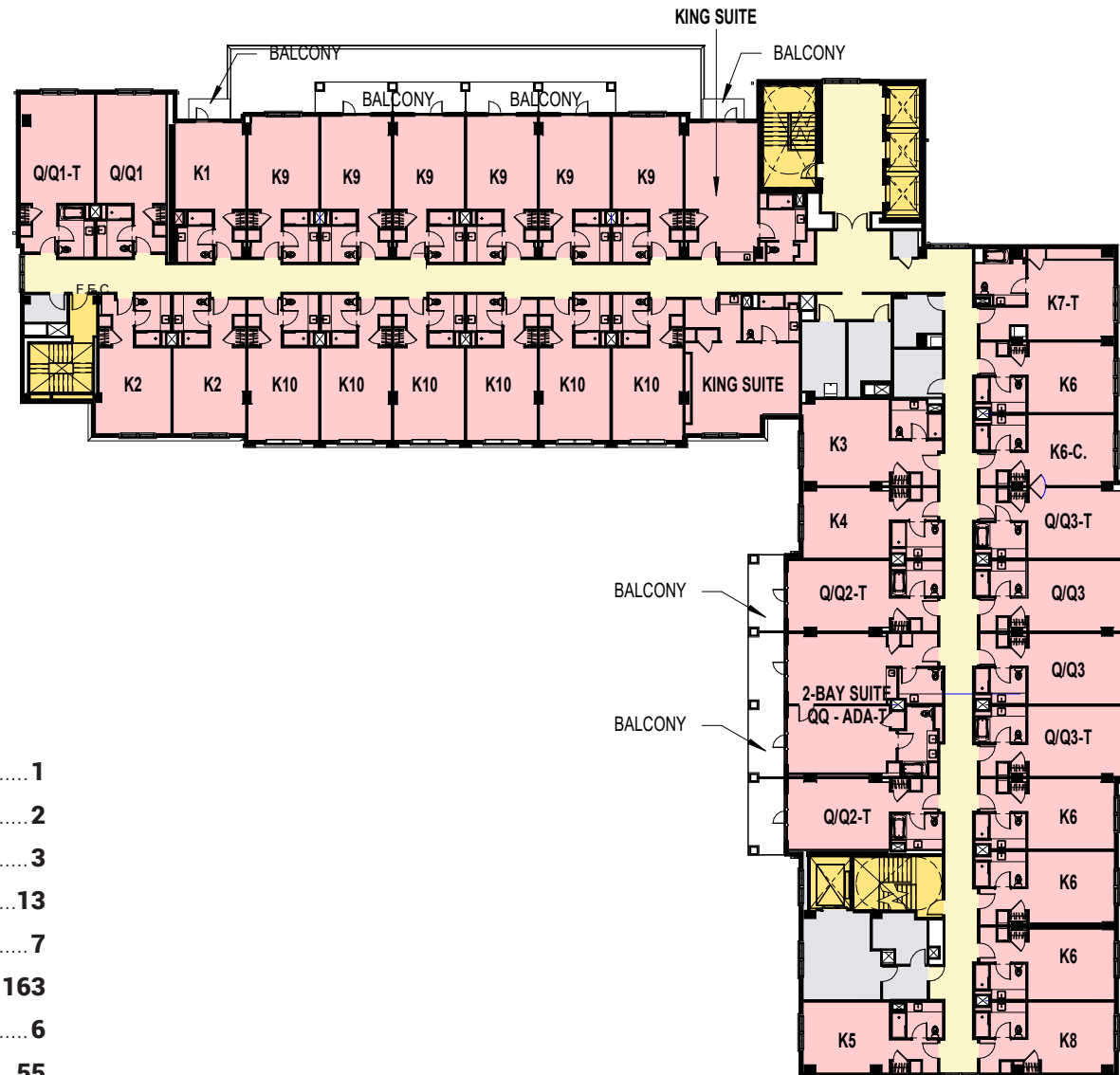
## FLOOR PLAN LEVEL 3



**Artist conceptual rendering.** Any renderings and depictions in this brochure are conceptual only and are for the convenience of reference. They should not be relied upon as representations, express or implied, of the final detail of the hotel. The Developer expressly reserves the right to make modifications, revisions, and changes it deems desirable in its sole and absolute discretion. Dimensions and square footage are approximate and may vary with actual construction.

## FLOOR PLAN LEVELS 4-7





## ROOM TYPES

Presidential Suite.....	1
Executive King Suite .....	2
Executive Queen Suite.....	3
King Suite.....	13
King Room with Balcony.....	7
King Room .....	163
Queen Room with Balcony .....	6
Queen Room.....	55

**Artist conceptual rendering.** Any renderings and depictions in this brochure are conceptual only and are for the convenience of reference. They should not be relied upon as representations, express or implied, of the final detail of the hotel. The Developer expressly reserves the right to make modifications, revisions, and changes it deems desirable in its sole and absolute discretion. Dimensions and square footage are approximate and may vary with actual construction.

FLOOR PLAN  
LEVEL 8





## ROOM AMENITIES

Mini fridge  
 Personal coffee makers  
 Two (2) complimentary bottled waters  
 Two (2) robes and slipper sets  
 Full length mirror with plug-in  
 Fully lit mirror in bathroom  
 ADA rooms with roll-in showers  
 In-room wireless internet

Televisions – 44"  
 In-room safe  
 One (1) set of connecting rooms per floor  
 In-room dining  
 Valet parking - \$25  
 Paid self-parking  
 Resort fee is 12%



**Artist conceptual rendering.** Any renderings and depictions in this brochure are conceptual only and are for the convenience of reference. They should not be relied upon as representations, express or implied, of the final detail of the hotel. The Developer expressly reserves the right to make modifications, revisions, and changes it deems desirable in its sole and absolute discretion. Dimensions and square footage are approximate and may vary with actual construction.

FLOOR PLAN  
 LEVEL 9



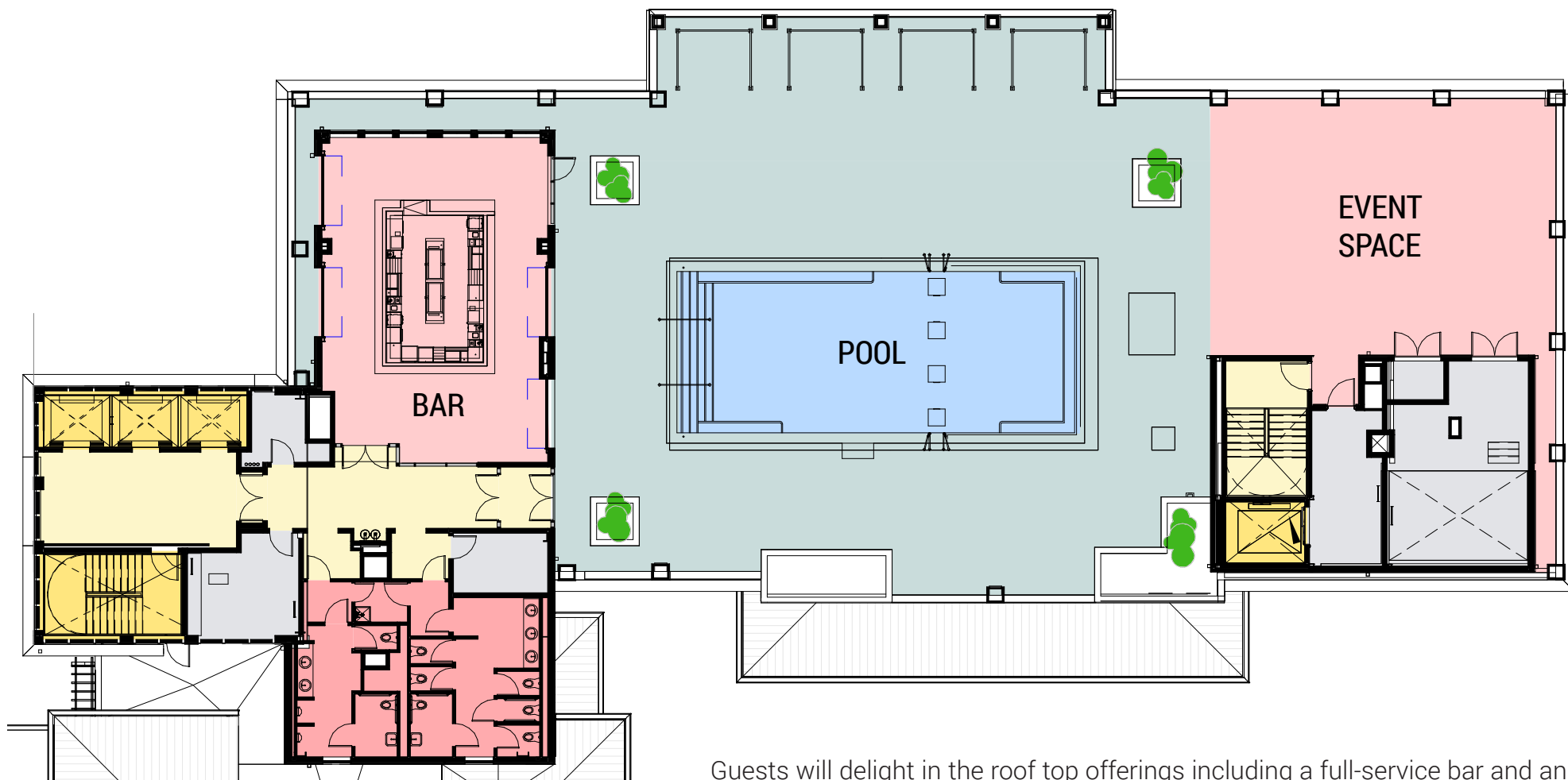


HOTEL EFFIE  
SANDESTIN



**Artist conceptual rendering.** Any renderings and depictions in this brochure are conceptual only and are for the convenience of reference. They should not be relied upon as representations, express or implied, of the final detail of the hotel. The Developer expressly reserves the right to make modifications, revisions, and changes it deems desirable in its sole and absolute discretion. Dimensions and square footage are approximate and may vary with actual construction.

EXTERIOR  
ROOF TOP POOL



Guests will delight in the roof top offerings including a full-service bar and an open-air event space. Enjoy relaxing afternoon by the pool while enjoying a panoramic view of Sandestin Golf and Beach Resort. The bar will entice hotel guests and locals alike with a variety of high-end wines, spirits, hand-crafted cocktails and small bites.



**Artist conceptual rendering.** Any renderings and depictions in this brochure are conceptual only and are for the convenience of reference. They should not be relied upon as representations, express or implied, of the final detail of the hotel. The Developer expressly reserves the right to make modifications, revisions, and changes it deems desirable in its sole and absolute discretion. Dimensions and square footage are approximate and may vary with actual construction.

## FLOOR PLAN ROOF TOP POOL





HOTEL EFFIE  
SANDESTIN



**Artist conceptual rendering.** Any renderings and depictions in this brochure are conceptual only and are for the convenience of reference. They should not be relied upon as representations, express or implied, of the final detail of the hotel. The Developer expressly reserves the right to make modifications, revisions, and changes it deems desirable in its sole and absolute discretion. Dimensions and square footage are approximate and may vary with actual construction.

EXTERIOR ELEVATION  
EVENING, SOUTH

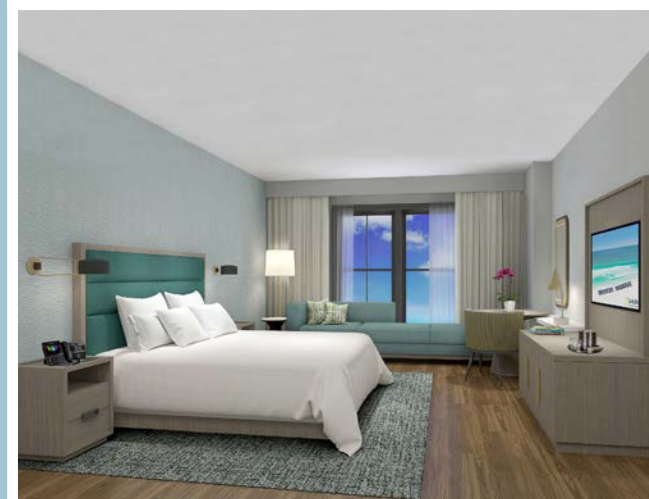




## OVERVIEW

- Brand-new, full-service hotel
- 250 well-appointed guest rooms
- Onsite three-meal restaurant, vibrant lobby bar and room service available
- Luxury spa and onsite fitness center
- Signature rooftop pool and bar
- Guests of the hotel will have access to the many amenities offered by the Sandestin Golf and Beach Resort including:
  - Access to 2,400 acres of which includes 30 charming neighborhoods and 1,300 vacation rentals (*encompassing condominiums, villas & town homes*)
  - Miles of beaches and pristine bayfront
  - Four pools
  - Four championship golf courses
  - Fifteen world-class tennis courts (both clay and hard courts)
  - Miles of multi-use trails for jogging, walking and biking
  - 113-slip marina
  - Kayak, wave runner, bicycle and boogie board rentals
  - Complimentary Resort Tram
  - Located onsite, The Village of Baytowne Wharf features retail shops, activities, entertainment, award winning restaurants and night clubs plus seasonal festivals, concerts & more

For additional information or to inquire about your next group or social event, please call 844.267.3737 or email [meetings@sandestin.com](mailto:meetings@sandestin.com).







## MEETINGS & EVENTS

- 20,000 square feet of dedicated meeting and event space, including a 13,000 square foot Ballroom
- The hotel meeting and event space will be contiguous to the existing 30,000 square feet of function space located at the Baytowne Conference Center *(part of the Sandestin Golf & Beach Resort)*
- The complete 50,000 square feet of space will enable Sandestin to accommodate groups upwards of 1200 attendees
- The complex will have the capability to host multiple group configurations simultaneously

## STRATEGIC PARTNERS

- CONTRACTOR - Batson - Cooke
- ARCHITECT - Cooper Carry
- INTERIOR DESIGNER - Design Continuum, Inc.
- MANAGEMENT COMPANY - Highgate
- CELEBRITY CHEF - Hugh Acheson

For additional information or to inquire about your next group or social event, please call 844.267.3737 or email [meetings@sandestin.com](mailto:meetings@sandestin.com).





# HOTEL EFFIE

SANDESTIN