




RADISSON COLLECTION
GRAND PLACE BRUSSELS

Personal, Professional,
MEMORABLE

RADISSON
MEETINGS™

WELCOME

to a new chapter

Following a major refurbishment, the formerly known Radisson Blu Royal Hotel Brussels has recently joined the Radisson Collection family. At this occasion, we invite you to rediscover an emblematic hotel featuring upgraded facilities, redesigned guest rooms, and two new restaurants with original culinary concepts.

With enhanced spaces exclusively designed for professional meetings, the new Radisson Collection Hotel, Grand Place Brussels will undoubtedly give an exceptional character to your events.

Take advantage of 18 freshly redesigned and revamped meeting rooms, mainly distributed around the hotel's luminous atrium. Thanks to our dedicated team of event professionals and in-house AV partners, the stage is set to guarantee successful meetings, from start to finish.

Planning to accommodate your guests overnight? We have 282 elegant rooms (starting at 26 m²) and suites (ranging up to 156 m²) combining sleek contemporary design with true comfort.

Introducing Radisson Collection

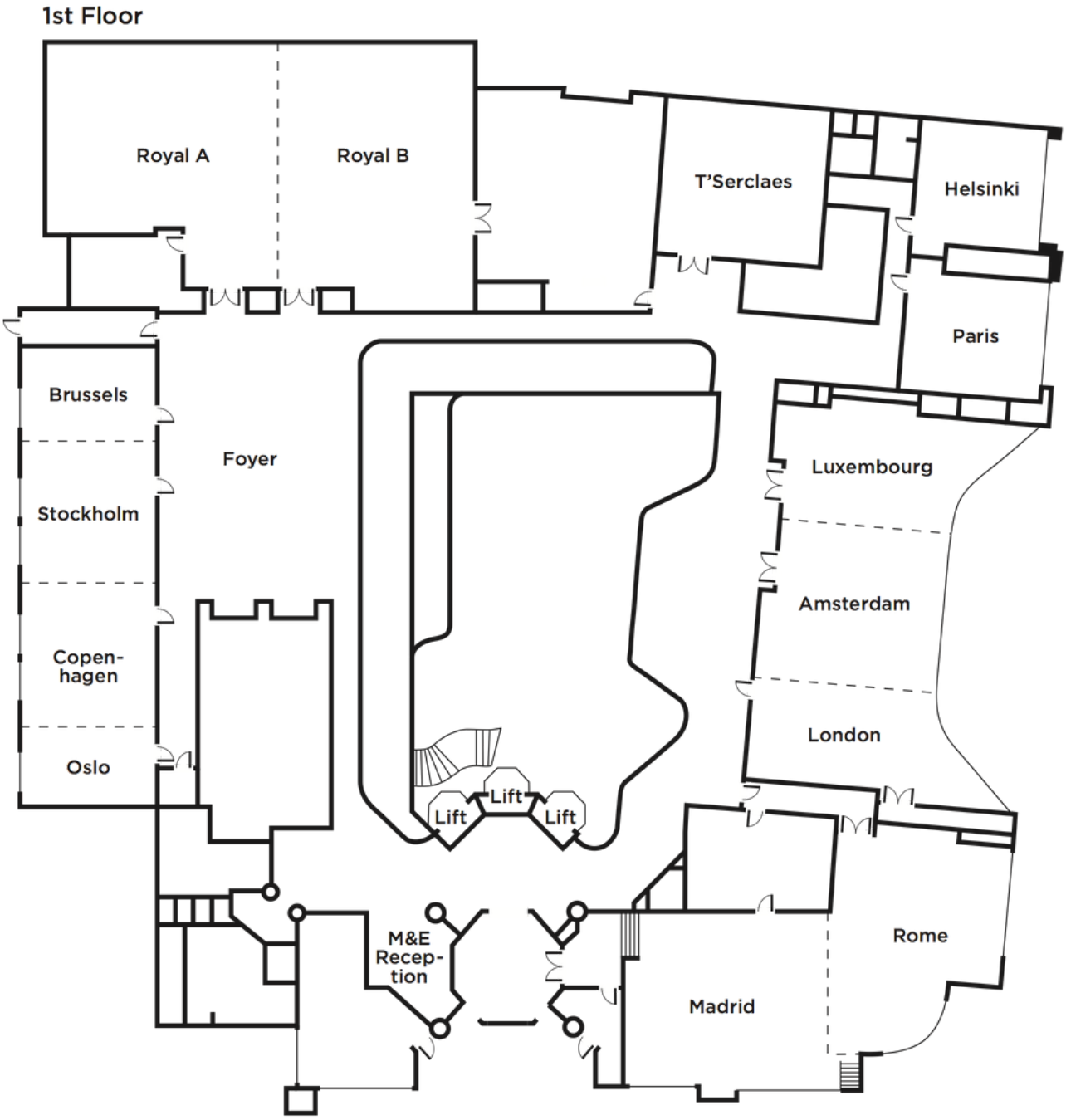
Radisson Collection is a unique collection of iconic hotels located in prestigious locations, close to prime leisure attractions. While each Radisson Collection hotel feels authentic to its locality, all of them offer the ultimate template for contemporary living – united by modern design and exceptional experiences across dining, fitness, wellness and sustainability.

Location

The Radisson Collection Hotel, Grand Place Brussels provides very easy access to Brussels Central railway station with direct connections to the airport, the city's subway and Europe's main rail lines (Thalys, Eurostar, ICE), making it a convenient base to stay and meet.

Dedicated

MEETING FLOOR

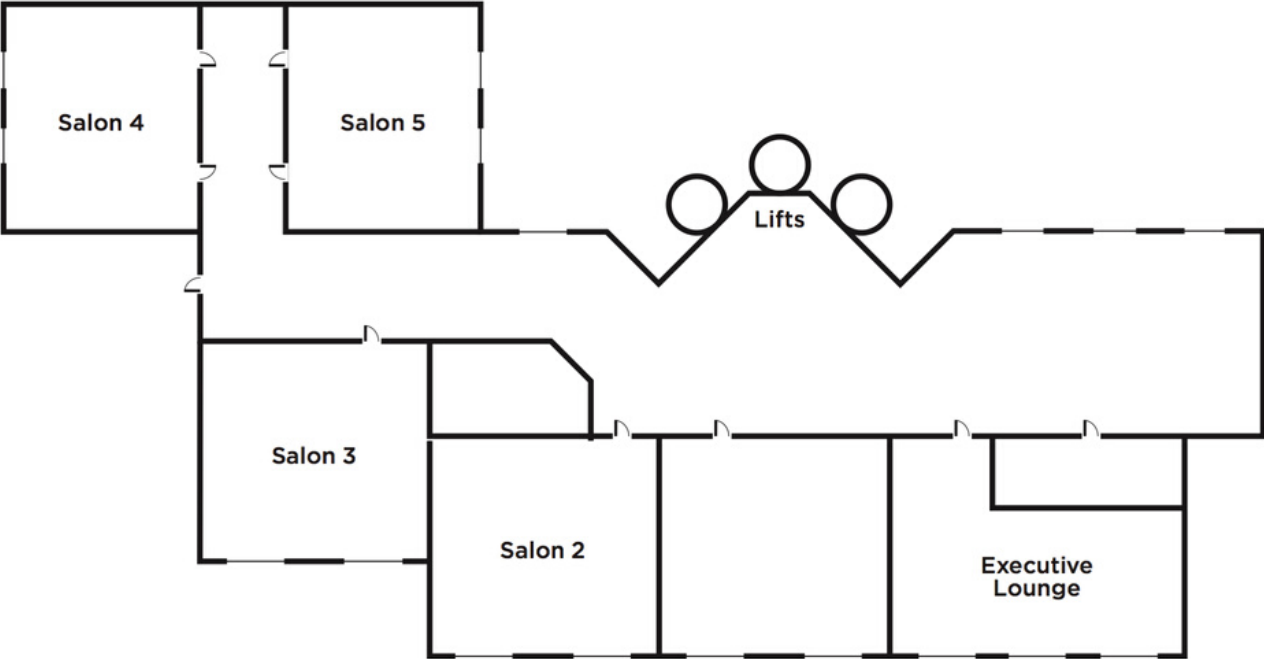


| 1 ST FLOOR | Board-room | U-shape | Class-room | Cabaret | Hollow square | Banquet | Theatre | Cocktail | m2 | sq. ft | ceiling | dimensions |
|--|------------|---------|------------|---------|---------------|---------|---------|----------|-----|---------|---------|-------------|
| Royal A | 38 | 42 | 81 | 48 | 56 | 120 | 130 | 120 | 139 | 1496 | 3.5 | 11 x 10.3 |
| Royal B | 54 | 54 | 108 | 72 | 72 | 132 | 160 | 150 | 156 | 1679 | 3.5 | 15.2 x 10.2 |
| Royal | 94 | 72 | 246 | 160 | 96 | 300 | 420 | 350 | 295 | 3174 | 3.5 | 22.9 x 13 |
| Foyer | – | – | – | – | – | 90 | – | 250 | 133 | 1431 | 3.8 | 8.8 x 15.1 |
| Foyer & Balcony | – | – | – | – | – | 170 | – | 330 | 238 | 2560.88 | 3.8 | – |
| Brussels | 14 | 14 | 12 | 16 | 22 | 24 | 20 | 20 | 32 | 344 | 3.5 | 6.7 x 4.8 |
| Stockholm | 24 | 24 | 27 | 24 | 32 | 48 | 50 | 40 | 49 | 527 | 3.5 | 6.7 x 7.3 |
| Copenhagen | 24 | 24 | 27 | 24 | 32 | 48 | 50 | 40 | 49 | 527 | 3.5 | 6.7 x 7.3 |
| Oslo | 14 | 14 | 12 | 16 | 22 | 24 | 20 | 20 | 30 | 323 | 3.5 | 6.7 x 4.5 |
| Brussels, Stockholm, Copenhagen & Oslo | – | – | – | – | – | 144 | – | 200 | 160 | 1722 | 3.5 | 24.4 x 7.1 |
| T'Serclaes | 30 | 32 | 48 | 32 | 48 | 60 | 90 | 60 | 75 | 807 | 3.5 | 8.3 x 9 |
| Amsterdam | 18 | 21 | 36 | 30 | 30 | 50 | 66 | 40 | 68 | 732 | 3.2 | 8.7 x 7.8 |
| Luxembourg | 18 | 21 | 27 | 18 | 24 | 50 | 40 | 30 | 47 | 506 | 3.2 | 8.3 x 5.7 |
| Amsterdam & Luxembourg | 30 | 36 | 63 | 48 | 42 | 100 | 117 | 100 | 117 | 1259 | 3.2 | 8.7 x 13.5 |
| London | 20 | 21 | 27 | 24 | 30 | 40 | 50 | 40 | 58 | 624 | 3.2 | 8.7 x 6.7 |
| Amsterdam, Luxembourg & London | 48 | 48 | 99 | 72 | 54 | 150 | 178 | 150 | 175 | 1883 | 3.2 | 8.7 x 20.2 |
| Madrid | 18 | 21 | 33 | 30 | 24 | 40 | 50 | 60 | 102 | 1098 | 3.3 | 9.3 x 10.9 |
| Rome | 18 | 18 | 27 | 24 | 24 | 40 | 50 | 45 | 63 | 678 | 3.3 | 8.9 x 7.1 |
| Madrid & Rome | – | – | – | – | – | 90 | – | 120 | 185 | 1991 | 3.3 | - |
| Paris | 12 | – | – | – | – | – | – | – | 44 | 473 | 3.2 | 7.3 x 6 |
| Helsinki | 12 | – | – | – | – | – | – | – | 44 | 473 | 3.2 | 7.3 x 6 |

Additional

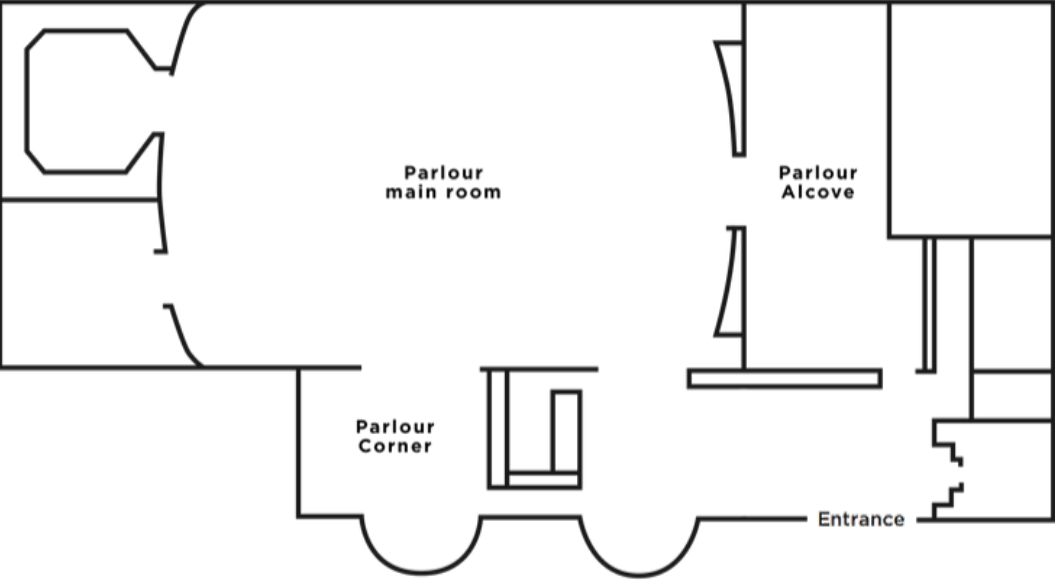
MEETING SPACES

7th Floor



| 7 TH FLOOR | Board-room | U-shape | Class-room | Cabaret | Hollow square | Banquet | Theatre | Cocktail | m2 | sq. ft | ceiling | |
|-------------------|------------|---------|------------|---------|---------------|---------|---------|----------|-----|--------|---------|------------|
| Salon 2 | 20 | 25 | 27 | 24 | 30 | 48 | 50 | 50 | 51 | 549 | 2.3 | 7 x 7.3 |
| Salon 3 | 20 | 25 | 27 | 24 | 30 | 48 | 50 | 50 | 51 | 549 | 2.3 | 7 x 7.3 |
| Salon 4 | 20 | 25 | 27 | 24 | 30 | 48 | 50 | 55 | 51 | 549 | 2.3 | 6.5 x 7.5 |
| Salon 5 | 20 | 25 | 27 | 24 | 30 | 48 | 50 | 55 | 51 | 549 | 2.3 | 6.5 x 7.5 |
| GROUND FLOOR | Board-room | U-shape | Class-room | Cabaret | Hollow square | Banquet | Theatre | Cocktail | m2 | sq. ft | ceiling | |
| Parlour Corner | — | — | — | — | — | 24 | — | — | 24 | 258 | 3.5 | 4.8 x 5 |
| Parlour Alcove | — | — | — | — | — | 28 | — | — | 37 | 398 | 3.5 | 4.1 x 9.1 |
| Parlour Main Room | — | — | — | — | — | 96 | — | 100 | 110 | 1184 | 3.5 | 12.1 x 9.1 |
| Parlour (all inc) | — | — | — | — | — | 200 | — | 220 | 249 | 2679 | 3.5 | 13.8 x 18 |

Ground Floor



Radisson Collection Hotel, Grand Place Brussels
Rue du Fossé-aux-Loups, 47
1000 Brussels, Belgium