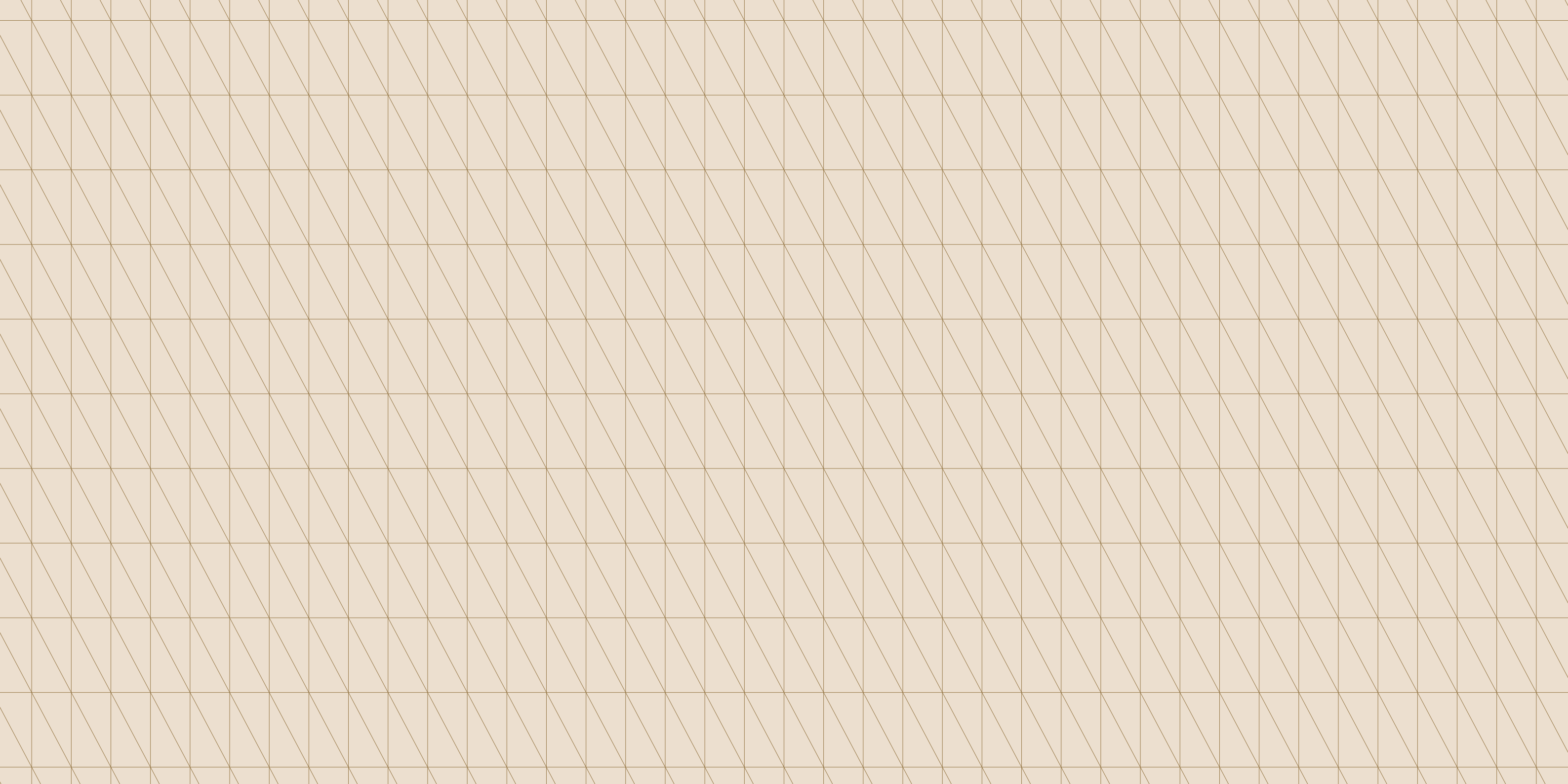




THE LONDONER

LEICESTER SQ.

Premieres late 2020



Picture a place;
An extraordinary place...





A New Hotel Category of One

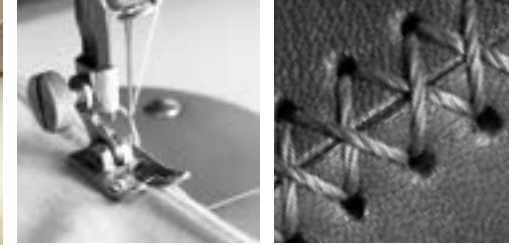
The Londoner: A Super Boutique Hotel

Boutique in feel yet staggering in scale; individual, intimate, eclectic and curated. A perfectly engineered collection of spaces, tastes, textures and offerings is brought to life over 16 storeys in London's legendary square.

The Londoner is home to 350 exquisite bedrooms and suites, each with their own unique views of London. Discover a collection of restaurants and bars, including alfresco dining on the ground floor, a rooftop bar, a magnificent ballroom, private meeting and events spaces, an urban spa experience and two screening rooms.

Elegant & Discrete Design

Every Londoner room balances material and spatial sensibility with an eye for boutique fashioning and style. Fastidious detailing and finishing are offset by curated artworks and objets d'art. Every room offers a Londoner's Eye view of the eclectic city in which it revolves, and a sumptuous bed from which to savour it.







Immerse & Inspire

Every Londoner room offers a singular and unique view of London with which to immerse yourself into the city that surrounds you; from grand squares, elegant roof tops and regal parks, to the electric neon bustle and rub of teeming theatreland streets, shopping districts and the city beyond.

Wherever you look, a unique shade of London lies to inspire and ignite you.

Energy & Intimacy

The Londoner's public and private spaces bring intimacy and energy to Londoner life. From the open, expansive welcome of the Lobby to the late-afternoon-living and live music of The Stage, The Londoner offers a vibrant variety of atmospheres and energies.

Private guest areas such as The Residence offer discrete spaces where guests can relax, work and connect, all wrapped up in luxurious surroundings.





Relax & Recharge

A pool surrounded by private cabanas offers personalised treatments by our expert therapists, while our fully-equipped gymnasium allows you to fire up the physical.

The spa bar creates freshly-made juices and drinks with light bites to complement holistic relaxation.

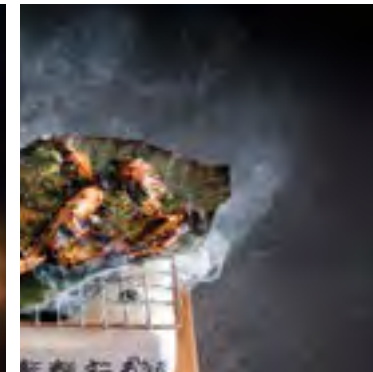
For a polished and groomed finish, the hair & nail salon and barbershop will be available by appointment.



Sip & Savour

The Londoner features restaurants and bars of different natures, textures and hues: contemporary Japanese and a myriad of tastes from the Mediterranean collide with sharp cocktail culture and laid-back bite-sized delectations.

From breakfast and brunch in bright airy spaces with a window on Leicester Square to discrete, elegant, sensuous rooms and rooftop dining, The Londoner is here to tempt, thrill and enthrall.





The Ballroom

This breathtaking and expansive venue can transform itself from an extravagant gala night, to a spectacular wedding ball, to a fully-equipped, digitally-enabled conference with the meticulous attention and expertise of our skilled and dedicated team.

	Theatre Capacity	Classroom Capacity	Boardroom Capacity	Cabaret Capacity	Lunch/Dinner Capacity	Reception Capacity
Ballroom	838	387	-	464	600	850
Ballroom A	433	189	82	216	288	350
Ballroom B	424	168	80	208	276	310
Ballroom Foyer	-	-	-	-	-	250

	Area		Length		Width		Height	
	sq m	sq ft	m	ft	m	ft	m	ft
Ballroom	566	6,093	35.6	116' 8"	15.9	52' 2"	5.8	19'
Ballroom A	289	3,115	18.2	59' 7"	15.9	52' 2"	5.8	19'
Ballroom B	272	2,927	17.1	56' 1"	15.9	52' 2"	5.8	19'
Ballroom Foyer	237	2,551	-	-	-	-	-	-





The Green Room

Lose yourself in the marble and velvet interior of The Green Room. This atmospheric space can be shaped to host an array of private events for up to 150 guests.

	Area		Length		Width		Height	
	sq m	sq ft	m	ft	m	ft	m	ft
The Green Room	299	3,214	23.7	77' 8"	12.6	41' 3"	2.2	7' 2"

The Gallery

Seven unique rooms offer elegant and inspiring work environments that can be transformed into the perfect venue for private and intimate bespoke events.

	Theatre Capacity	Classroom Capacity	Boardroom Capacity	U-shape Capacity	Cabaret Capacity	Lunch/Dinner Capacity	Reception Capacity
The National Gallery	25	9	12	-	-	12	22
Somerset House	25	9	12	-	-	12	22
The National Gallery + Somerset House	52	21	27	27	-	27	44
Royal Academy of Arts	81	36	34	26	24	36	60
Tate Britain	42	24	22	20	16	24	38
Hayward Gallery	36	21	22	20	16	24	38
Tate Britain + Hayward Gallery	95	42	47	50	40	52	76
Serpentine Galleries	-	-	14	12	-	-	-
Maddox Gallery	-	-	14	12	-	-	-

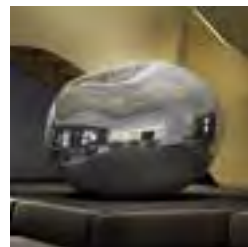
Breakout Area

Gallery	-	-	-	-	-	-	171
Gallery Foyer	-	-	-	-	-	-	275

	Area		Length		Width		Height	
	sq m	sq ft	m	ft	m	ft	m	ft
The National Gallery	20	215	6.2	20' 4"	3.2	10' 6"	3.5	11' 6"
Somerset House	20	215	6.4	21'	3.2	10' 6"	3.5	11' 6"
The National Gallery + Somerset House	40	431	12.6	41' 4"	3.2	10' 6"	3.5	11' 6"
Royal Academy of Arts	54	581	9.9	32' 6"	5.8	19'	3.5	11' 6"
Tate Britain	34	366	7.9	25' 11"	4.2	13' 9"	3.5	11' 6"
Hayward Gallery	34	366	7.9	25' 11"	4.2	13' 9"	3.5	11' 6"
Tate Britain + Hayward Gallery	68	732	15.8	51' 10"	4.2	13' 9"	3.5	11' 6"
Serpentine Galleries	35	377	8.4	27' 7"	4.3	14' 1"	3.5	11' 6"
Maddox Gallery	39	420	8.9	29' 2"	4.6	15' 1"	3.5	11' 6"

Breakout Area

Gallery	162	1,744	16.8	55'	12.4	40' 6"	3.5	11' 5"
Gallery Foyer	256	2,756	25.8	84' 5"	12.4	40' 6"	-	-





Where the four corners of London meet

London is a city of brilliant collisions, contradictions and juxtapositions; a diverse mix of people, places, atmospheres and experiences. The Londoner reflects that fact at every level.

The Londoner's position at the heart of the capital, in the south-west corner of Leicester Square, makes it the perfect launchpad from which to explore each of London's unique and particular neighbourhoods.

Fabric of London

Edwardian Hotels London have been shaping hosted experiences for 40 years, meticulously stitching ourselves into the life and experience of the great city we call home.

But to truly become a part of the fabric of London, we've put our hands in the earth, to build a hotel experience from the ground up and the inside out – a Super Boutique Hotel at the corner of one of London's most iconic squares that embodies everything we believe about what makes an experience truly remarkable.



Overview

350 Bedrooms

- 10 Queen rooms
- 49 Superior rooms
- 241 Deluxe rooms
- 19 Junior suites
- 20 Corner suites
- 7 London Skyline suites
- The Horatio Nelson suite
- The Trafalger suite
- The Capital suite

Exclusively for our guests

- The Residence, including
The Whisky Room, Y Bar
and The Drawing Room
- The Courtyard

Meeting & Events Areas

- The Ballroom
- The Green Room
- The Gallery's 7 meeting rooms
- 2 Screening rooms
- 33 Syndicate rooms

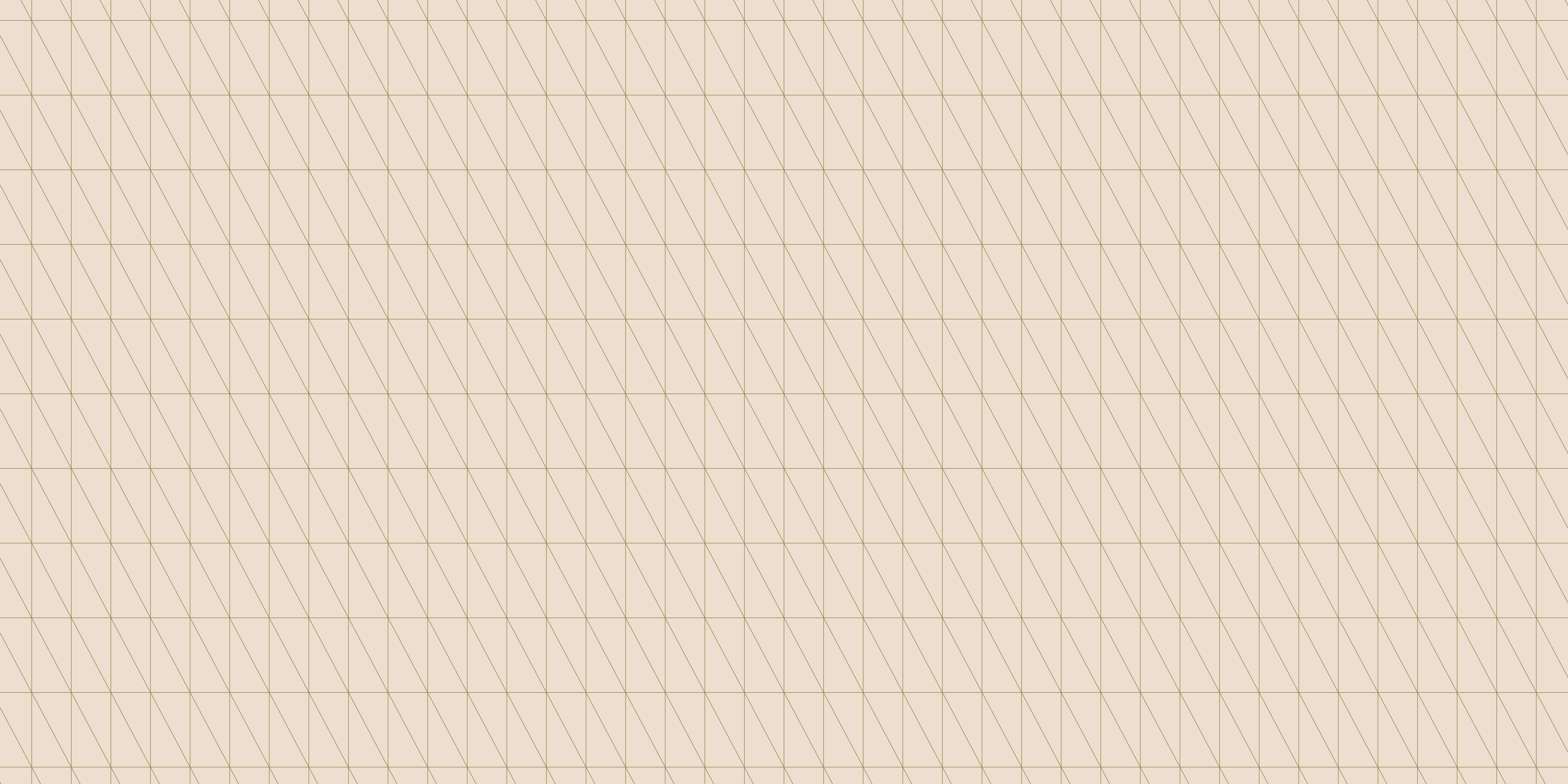
Restaurant & Bars

- Signature restaurant and terrace
- Lobby Bar
- Gastro Tavern
- Rooftop bar

The Retreat

- Gym
- Swimming pool
- Sauna & Steam
- Cabanas & treatment rooms
- Spa bar
- Hair & nail salon
- Barbershop







THE LONDONER

LEICESTER SQ.