



LE ROYAL MONCEAU

RAFFLES PARIS

YOUR EVENT  
IN A TRUE PARISIAN PALACE





# LE ROYAL MONCEAU

RAFFLES PARIS

## *Unique experiences*

*Le Royal Monceau – Raffles Paris* is an exclusive destination that provides the unique sensation of escaping the day-to-day in the comfort of your own personal residence. Enjoy the privilege of being a host and a guest in a setting that blends creative influences, emotions and cultures.

Opened in 1928 and completely renovated in 2010, the hotel embodies bold and modern Parisian sensibilities. Guestrooms and suites are designed in the style of a private apartment while the public spaces promote rest, relaxation, and creativity, with artistic elements scattered throughout the building, from *La Librairie des Arts* bookshop and the *Art District* contemporary art gallery, to the 300 works awaiting discovery in the hotel.

The contemporary and artistic *Royal Monceau – Raffles Paris* is the ideal setting to host memorable and unique events in Paris.



# THE RECEPTION ROOMS

*Pierre Bermond . André Junot . Louis Dubayon*

The property's three reception areas, *Salon Pierre Bermond*, *Salon André Junot* and *Salon Louis Dubayon*, located on the hotel's first floor, are flooded with natural light. These flexible spaces can be transformed into one to three rooms with the capacity to host up to 120 people. The spaces cater to all types of gatherings and can be arranged differently according to the purpose and the number of guests, from a U-shape for meetings to cocktail style for social events.

**Maximum capacities:**

*Pierre Bermond*, 44 m<sup>2</sup> (473 sq ft): 30 people

*André Junot*, 40 m<sup>2</sup> (430 sq ft): 30 people

*Louis Dubayon*, 63 m<sup>2</sup> (678 sq ft): 60 people

*Pierre Bermond, André Junot and Louis Dubayon*, 147 m<sup>2</sup> (1582 sq ft): 120 people







# LE SALON JARDIN

## *An intimate setting*

Accommodating up to 15 people in a boardroom format, *Le Salon Jardin* offers an intimate ambiance, opening out directly onto the hotel's colorful garden.

Bathed in natural light, *Le Salon Jardin* can be adapted to meet your wishes and needs. The hotel can adjust the layout of the tables, supply technological equipment, provide decor, and offer a variety of catering options from our restaurants.

**Maximum capacities:**  
*Le Salon Jardin*, 40 m<sup>2</sup> (430 sq ft): 15 people





# KATARA CINEMA

## *Our private room*

The cocoon-like *Katara* Cinema boasts comfortable and plush seats made from natural leather with individual tray tables and a stage. Available for private hire, this unique 99-seat space is equipped with cutting-edge technology, including digital projection with 2D and 3D capabilities. A VIP area at the entrance to the cinema provides an intimate setting networking and socializing with attendees during the event.

This is the perfect place for private screenings, general meetings, workshops or conferences.

### **Capacities:**

*Katara* cinema, 200 m<sup>2</sup> (2152 sq ft): From 20 to 99 people







# THE ART GALLERY

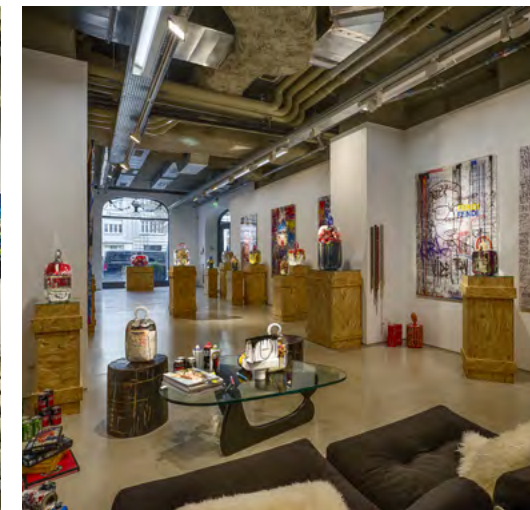
## *Art District*

An essential stop on the Paris contemporary art circuit, the *Art District* gallery welcomes artists, enlightened connoisseurs, patrons and professionals.

Accessible via a private entrance on 41 Avenue Hoche, the gallery offers an intimate and creative setting to host a memorable event or a small dinner party.

### Maximum capacities:

The *Art District* gallery, 75m<sup>2</sup> (807 sq ft): 50 people





# THE SUITES

## *Warm and contemporary design*

*Le Royal Monceau's* rooms and suites are styled to offer a generous blend of contemporary design and unique Parisian spirit. Combining the rigorous elegance of the 1940s and 50s with poetic, noteworthy details, each room has its own unique story. With a residential-style layout, the suites and apartments feature the amenities of a luxury home including spacious dining and living areas with design touches from table top backs to guitars.

*Le Royal Monceau* suites are the ideal place for private meetings, dinners or intimate cocktail parties.

### **Maximum capacities**

Junket Suites (from 23 to 25 m<sup>2</sup> / from 247 to 269 sq ft): 15 people

Royal Monceau Suite (190 m<sup>2</sup> / 2045 sq ft): 20 people

Private Apartments (from 250 to 350 m<sup>2</sup> / from 269 to 3767 sq ft): 40 people







# CATERING

## *Gastronomy with style*

The culinary creativity of *Le Royal Monceau - Raffles Paris* is sure to delight guests. Savour the adventurous spirit of the Peruvian-Japanese style with the exotic cuisine of Nobu's *Matsubisa Paris*, the gourmet cuisine of Italian restaurant *Il Carpaccio* or the customised French creations of the Head Chef.

Dishes change on a seasonal basis to feature fresh, high-quality produce year-round. Every breakfast, lunch, dinner or canapé is devised with you to ensure your every wish is met.





# MADE TO MEASURE

## *Customised events*

At *Le Royal Monceau – Raffles Paris*, events can be customised upon request to suit guests exact needs. Whether it is a birthday tea for children in a salon, an engagement dinner, a wedding reception, cocktail classes, or a sushi lesson with the Chef of *Matsubisa Paris*, our events team will do its utmost to meet your wishes.







Le Royal Monceau - Raffles Paris  
37, avenue Hoche - 75008 Paris

