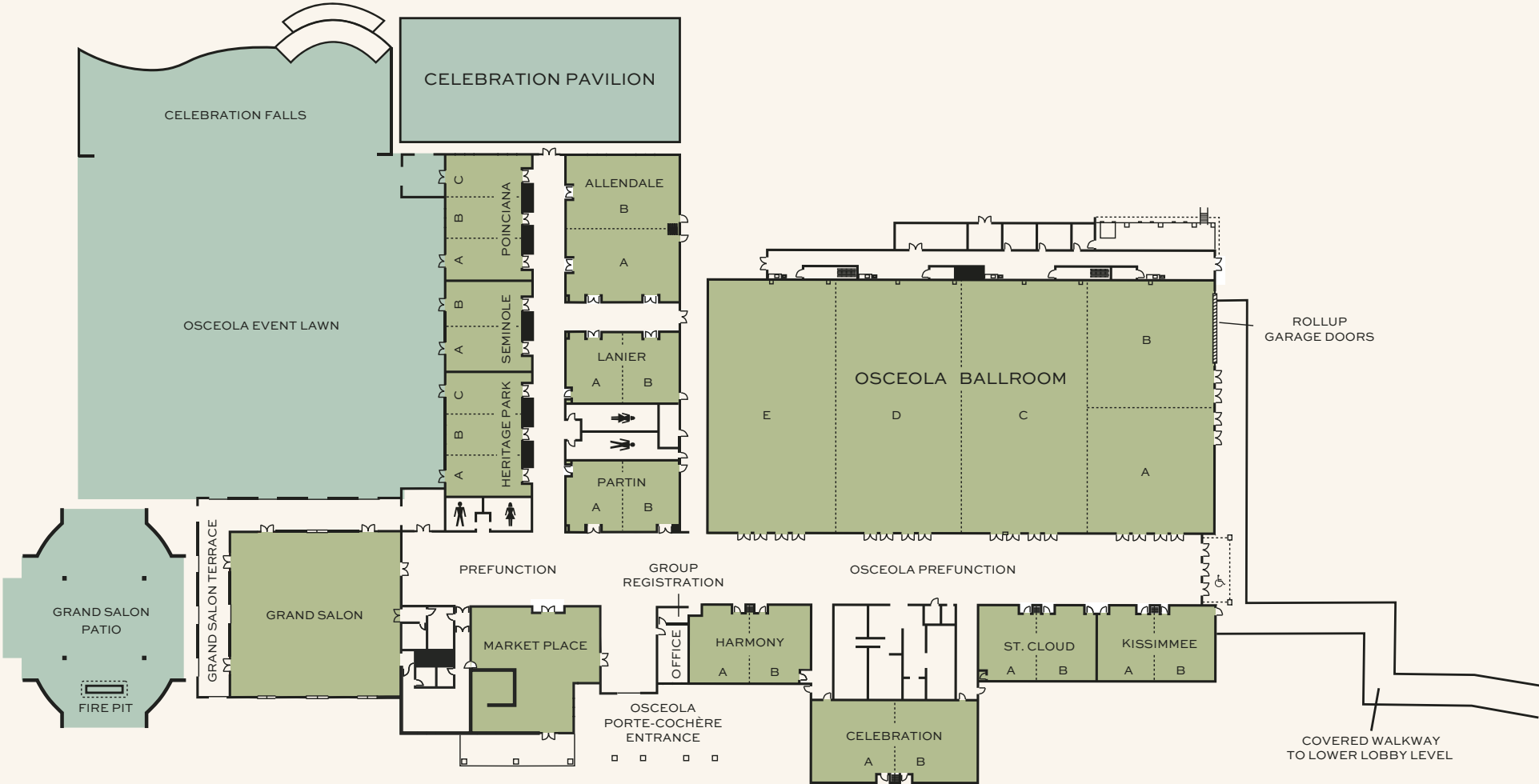


Flexible, Next Generation Event & Meeting Space.

	SQUARE FOOTAGE	DIMENSIONS L x W	CEILING HEIGHT	WINDOWS	THEATRE STYLE	CLASSROOM 18" TABLE	CRESCENT 72" ROUND	BANQUET 72" ROUND	RECEPTION	EXHIBITS 8' X 10'	EXHIBITS 10' X 10'	CONFERENCE	U-SHAPE	HOLLOW SQUARE
OSCEOLA COUNTY CONFERENCE CENTER														
CELEBRATION FALLS	7,800	150' X 52'	—	—	—	—	—	240	350	—	—	—	—	—
CELEBRATION PAVILION	7,590	66' X 115'	—	YES	850	550	315 (CRESCENTS OF 7)	450	550	50	40	—	—	—
OSCEOLA BALLROOM	28,800	240' X 120'	18'	NO	3,200	2,000	1,400	2,000	3,000	180	150	—	—	—
A, B (INDIVIDUALLY)	3,600	60' X 60'	18'	NO	400	250	175	250	360	25	20	120	100	85
A, B (COMBINED)	7,200	60' X 120'	18'	NO	800	500	350	500	720	45	35	240	200	175
A, B, C, D	21,600	120' X 180'	18'	NO	2,400	1,500	1,050	1,500	2,200	135	110	—	—	—
C, D, E (INDIVIDUALLY)	7,200	60' X 120'	18'	NO	800	500	350	500	720	45	35	240	200	175
C, D, E (ANY TWO SECTIONS)	14,400	120' X 120'	18'	NO	1,600	1,000	700	1,000	1,500	90	70	—	—	—
C, D, E (ANY THREE SECTIONS)	21,600	120' X 180'	18'	NO	2,400	1,500	1,050	1,500	2,200	135	110	—	—	—
PREFUNCTION	9,427	228' X 32'	16'	YES	—	—	—	—	850	—	—	—	—	—
KISSIMMEE	1,944	60' X 38'5"	13'	YES	220	80	84	170	195	12	10	65	60	50
A, B (INDIVIDUALLY)	972	30' X 38'5"	13'	YES	110	40	42	80	100	6	5	30	30	25
ST. CLOUD	1,944	60' X 38'5"	13'	YES	220	80	84	170	195	12	10	65	60	50
A, B (INDIVIDUALLY)	972	30' X 38'5"	13'	YES	110	40	42	80	100	6	5	30	30	25
CELEBRATION	2,921	61' X 43'	16'	YES	330	120	140	250	300	18	15	100	90	75
A, B (INDIVIDUALLY)	1,460	30'5" X 43'	16'	YES	165	60	70	120	150	9	10	50	40	35
HARMONY	1,944	60' X 38'5"	13'	YES	220	80	84	160	195	12	10	65	60	50
A, B (INDIVIDUALLY)	972	30' X 38'5"	13'	YES	110	40	42	60	100	6	5	30	30	25
ALLENDALE	3,850	55' X 70'	12'	YES	455	216	168	240	300	21	21	54	63	78
A, B (INDIVIDUALLY)	1,925	55' X 35'	12'	YES	168	120	84	120	150	10	10	42	45	54
HERITAGE PARK	2,460	41' X 60'	12'	YES	243	144	126	150	200	—	—	48	54	60
A, B, C (INDIVIDUALLY)	820	41' X 20'	12'	YES	71	49	42	30	40	—	—	24	24	36
A, B, C (ANY TWO SECTIONS)	1,640	41' X 40'	12'	YES	163	108	84	80	100	—	—	32	27	44
LANIER	1,904	34' X 56'	12'	NO	191	129	84	130	100	—	—	48	48	54
A, B (INDIVIDUALLY)	952	34' X 28'	12'	NO	108	75	42	60	75	—	—	24	30	30
SEMINOLE	1,806	42' X 43'	12'	YES	216	126	84	120	175	—	—	40	42	48
A, B (INDIVIDUALLY)	903	21' X 43'	12'	YES	108	63	42	60	75	—	—	32	32	42
POINCIANA	2,460	41' X 60'	12'	YES	243	126	126	150	200	—	—	48	54	60
A, B, C (INDIVIDUALLY)	820	41' X 20'	12'	YES	45	42	42	30	40	—	—	24	24	36
A, B, C (ANY TWO SECTIONS)	1,640	41' X 40'	12'	YES	144	84	84	80	100	—	—	32	27	44
PARTIN	1,904	34' X 56'	12'	NO	154	102	84	100	100	—	—	40	45	48
A, B (INDIVIDUALLY)	952	34' X 28'	12'	NO	84	50	42	50	75	—	—	24	27	36
GRAND SALON	6,480	80' X 81'	16'7"	YES	800	400	294	430	500	—	—	66	81	102
TERRACE	5,000	80' X 72'	—	—	—	—	—	200	300	—	—	—	—	—
PATIO	8,246	108' X 90'	—	—	—	—	480	—	550	—	—	—	—	—
OSCEOLA EVENT LAWN AND FLEX LAWN	33,300	185' X 180'	—	—	—	—	1,540	—	1,800	—	—	—	—	—
MARKET PLACE	2,200	—	—	—	—	—	—	—	150	—	—	—	—	—

Meeting Room Capacities Were Determined Using 72" Rounds Of 10 (Rounds Capacity), Three Chairs Per 6'X30" Table (U-Shape Capacity) And Three Chairs Per 6'X18" Table (Classroom Capacity) Allowing For Minimal Audiovisual Equipment.

Osceola County Conference Center.

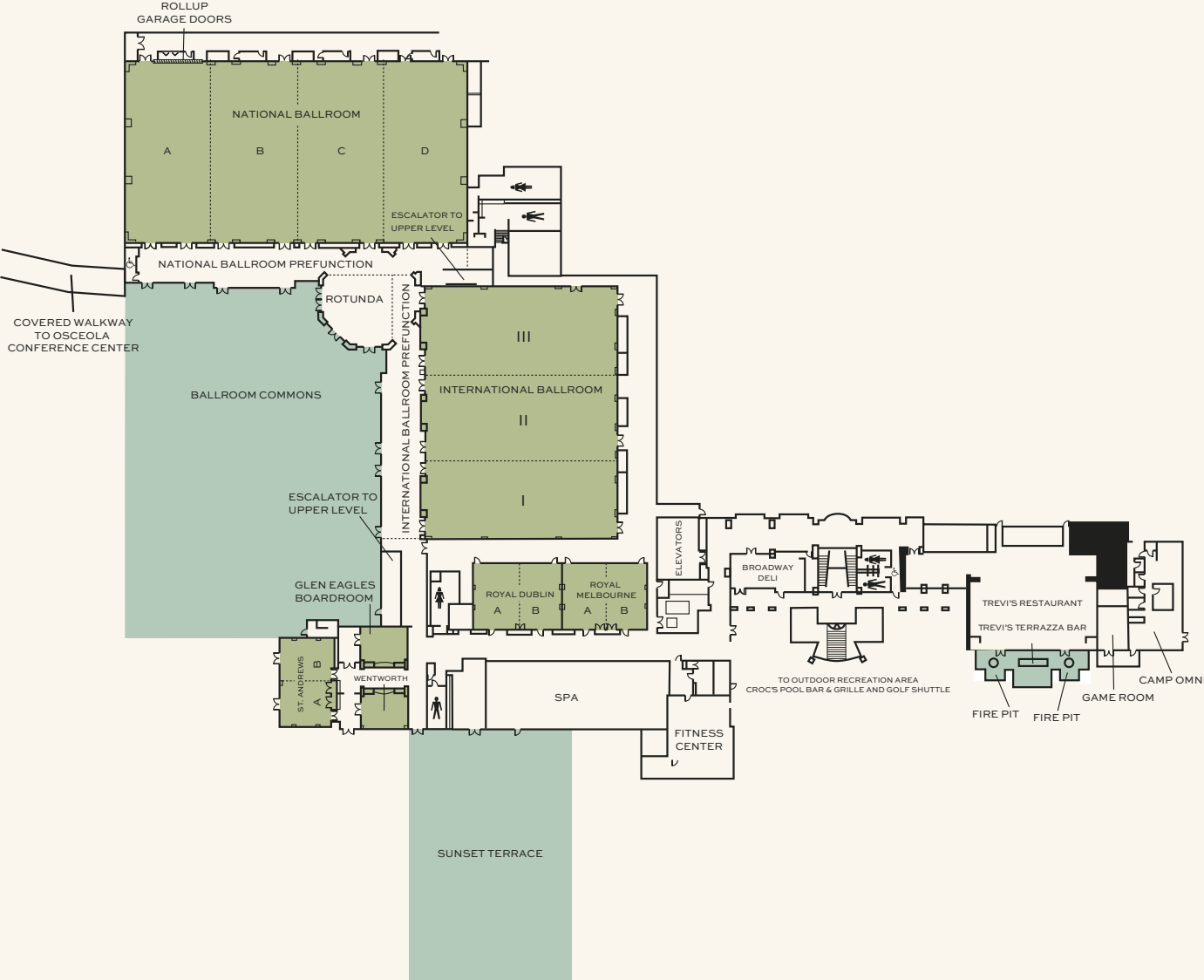


Flexible, Next Generation Event & Meeting Space.

	SQUARE FOOTAGE	DIMENSIONS L x W	CEILING HEIGHT	WINDOWS	THEATRE STYLE	CLASSROOM 18" TABLE	CRESCENT 72" ROUND	BANQUET 72" ROUND	RECEPTION	EXHIBITS 8' X 10'	EXHIBITS 10' X 10'	CONFERENCE	U-SHAPE	HOLLOW SQUARE
LOWER LOBBY LEVEL														
NATIONAL BALLROOM	24,631	215'5" X 114'3"	20'	NO	2,600	1,500	1,120	1,600	2,600	156	125	—	—	—
A, B, C, D (INDIVIDUALLY)	6,157	53' X 114'3"	20'	NO	650	400	280	400	650	40	32	—	—	—
A, B, C, D (ANY TWO SECTIONS)	12,314	106' X 114'3"	20'	NO	1,350	800	560	800	1,350	80	64	—	—	—
A, B, C, D (ANY THREE SECTIONS)	18,471	159' X 114'3"	20'	NO	2,000	950	840	1,200	2,000	120	96	—	—	—
NATIONAL PRE-FUNCTION	4,600	200' X 23'	14'	YES	—	—	—	—	480	—	—	—	—	—
INTERNATIONAL BALLROOM	19,315	121'4" X 159'11"	20'	NO	2,000	1,150	945	1,350	2,000	121	97	—	—	—
I, II, III (INDIVIDUALLY)	6,438	121'4" X 53'	20'	NO	725	425	315	450	725	41	33	—	—	—
I, II, III (ANY TWO SECTIONS)	12,876	121'4" X 106'	20'	NO	1,375	850	630	900	1,375	82	66	—	—	—
INTERNATIONAL PRE-FUNCTION	3,749	163' X 23'	14'	YES	—	—	—	—	380	—	—	—	—	—
ROTUNDA	1,617	44' X 42'	18'	YES	—	—	—	—	250	—	—	—	—	—
BALLROOM COMMONS OUTDOOR AREA	16,200	—	—	—	—	—	—	680	1,200	—	—	—	—	—
WENTWORTH	588	28' X 21'	12'	YES	50	32	21	30	40	—	—	20	20	24
ST. ANDREWS	1,685	31'2" X 54'	12'	YES	140	100	70	100	140	—	—	36	40	48
A, B (INDIVIDUALLY)	842	31'2" X 27'	12'	YES	70	50	35	50	70	—	—	18	20	24
GLEN EAGLES BOARDROOM	569	26'7" X 21'3"	12'	YES	—	—	—	—	—	—	—	12	—	—
ROYAL DUBLIN	2,111	52'9" X 39'9"	12'	NO	200	120	84	120	160	—	—	44	48	56
A, B (INDIVIDUALLY)	1,055	26'4" X 39'9"	12'	NO	100	60	42	60	80	—	—	22	24	28
ROYAL MELBOURNE	2,035	51' X 39'9"	12'	NO	200	120	84	120	160	—	—	44	48	56
A, B (INDIVIDUALLY)	1,017	25'6" X 39'9"	12'	NO	100	60	42	60	80	—	—	22	24	28
SUNSET TERRACE OUTDOOR PATIO	9,906	125' 5" X 79'	—	—	—	—	—	550	700	—	—	—	—	—
OTHER INDOOR AND OUTDOOR FUNCTION SPACE														
CHAMPIONS HALL CHAMPIONSGATE GOLF CLUB	2,516	68'4" x 37'2"	—	YES	220	171	—	150	200	15	12	—	—	—
MEETING SUITES 1-5 (EACH)	884	17' X 52'	9'	YES	40	30	28	40	35	—	—	20	20	18
ADULT POOL	3,500	—	—	—	—	—	—	—	200	—	—	—	—	—
FAMILY POOL	7,500	—	—	—	—	—	—	—	500	—	—	—	—	—
WAVE POOL	3,500	—	—	—	—	—	—	—	200	—	—	—	—	—
KID'S POOL AREA	4,500	—	—	—	—	—	—	—	400	—	—	—	—	—
FIRE PIT	750	—	—	—	—	—	—	—	75	—	—	—	—	—
TREVI'S TERRAZZA	1,500	—	—	—	—	—	—	50	75	—	—	—	—	—
EAGLES EDGE AT CHAMPIONSGATE	6,600	—	—	—	—	—	—	—	—	—	—	—	—	—

Meeting Room Capacities Were Determined Using 72" Rounds Of 10 (Rounds Capacity), Three Chairs Per 6'X30" Table (U-Shape Capacity) And Three Chairs Per 6'X18" Table (Classroom Capacity) Allowing For Minimal Audiovisual Equipment.

Lower Lobby Level / Other Function Space.



Flexible, Next Generation Event & Meeting Space.

	SQUARE FOOTAGE	DIMENSIONS L x W	CEILING HEIGHT	WINDOWS	THEATRE STYLE	CLASSROOM 18" TABLE	CRESCENT 72" ROUND	BANQUET 72" ROUND	RECEPTION	EXHIBITS 8' X 10'	EXHIBITS 10' X 10'	CONFERENCE	U-SHAPE	HOLLOW SQUARE
LOBBY LEVEL														
CHAMPIONSGATE WITH OUTDOOR PATIO	2,704	52' X 52'	14'	YES	280	152	126	180	200	—	—	52	60	72
OLYMPIC	1,672	44'5" X 37'4"	14'	YES	140	90	70	100	120	—	—	36	40	48
A, B (INDIVIDUALLY)	836	22'2" X 37'4"	14'	YES	70	45	35	50	60	—	—	18	20	24
AUGUSTA	2,008	54'3" X 37'4"	14'	YES	200	120	91	130	160	—	—	44	48	56
A, B (INDIVIDUALLY)	1,004	26'3.5" X 37'4"	14'	YES	100	60	42	60	80	—	—	22	24	28
LEGENDS BOARDROOM	974	40'1" X 24'3"	14'	YES	—	—	—	—	—	—	—	18	—	—
OAKMONT	1,685	31'2" X 54'	14'	YES	140	100	70	100	140	—	—	36	40	48
A, B (INDIVIDUALLY)	842	31'2" X 27'	14'	YES	70	50	35	50	70	—	—	18	20	24
RIVIERA	330	15' X 23'	14'	YES	20	—	—	—	—	—	—	10	—	—
CONGRESSIONAL	2,035	51' X 39'9"	14'	NO	200	120	91	130	—	—	—	—	—	—
A, B (INDIVIDUALLY)	1,017	25'6" X 39'9"	14'	NO	100	60	42	60	80	—	—	22	24	48
COLONIAL	2,035	51' X 39'9"	14'	NO	200	120	91	130	160	—	—	44	48	56
A, B (INDIVIDUALLY)	1,017	25'6" X 39'9"	14'	NO	100	60	42	60	80	—	—	22	24	28
PRE-FUNCTION	4,322	—	—	—	—	—	—	—	150	—	—	—	—	—
SALES BOARDROOM	300	—	—	—	—	—	—	—	—	—	—	6	—	—

Meeting Room Capacities Were Determined Using 72" Rounds Of 10 (Rounds Capacity), Three Chairs Per 6'X30" Table (U-Shape Capacity) And Three Chairs Per 6'X18" Table (Classroom Capacity) Allowing For Minimal Audiovisual Equipment.

Lobby Level.

