

teneo®
HOSPITALITY GROUP

ATLANTIS

PARADISE ISLAND BAHAMAS

MEETINGS • INCENTIVES • CONVENTIONS • EVENTS





ATLANTIS MAY BE *one of a kind*
BUT THE REASONS TO LOVE IT ARE
COUNTLESS

A VAST ARRAY OF ENRICHING ACTIVITIES
AND ONLY-AT-ATLANTIS EXPERIENCES

DIRECT FLIGHTS FROM OVER 20 CITIES
OFFER EFFORTLESS ACCESS

STUNNING, NEWLY-RENOVATED
GUEST ROOMS IN THE ICONIC ROYAL

A 25-MINUTE DRIVE FROM
LYNDEN PINDLING INTERNATIONAL AIRPORT

DOZENS OF REMARKABLE DINING
DESTINATIONS

THE LARGEST AND MOST DIVERSE MEETING
DESTINATION IN THE BAHAMAS AND
THE CARIBBEAN



destination QUICK FACTS

- ATLANTIS, PARADISE ISLAND IS LOCATED ON ITS OWN SELF-CONTAINED ISLAND AND CONNECTED BY A BRIDGE TO THE CITY OF NASSAU ON NEW PROVIDENCE ISLAND IN THE BAHAMAS
- A SHORT AND SCENIC 12-MILE RIDE FROM LYNDEN PINDLING INTERNATIONAL AIRPORT (NAS)
- EXTENSIVE AIRLIFT IS OFFERED FROM MULTIPLE DOMESTIC AND INTERNATIONAL LOCATIONS WITH DIRECT FLIGHTS FROM OVER 20 CITIES INTO NASSAU'S REDEVELOPED AND MODERN LYNDEN PINDLING INTERNATIONAL AIRPORT
- A 35 MINUTE FLIGHT FROM SOUTH FLORIDA AND A SHORT 3 HOURS FLIGHT FROM MAJOR NORTHEAST U.S. CITIES
- CLEAR IMMIGRATION AND CUSTOMS IN NASSAU BEFORE RETURNING TO THE UNITED STATES – AVOIDING DELAYS AT AIRPORTS AND MAKING IT AN EASY TRANSITION BACK TO THE U.S. TSA, GLOBAL ENTRY AND MPC ARE AVAILABLE.
- EASY SHIPPING/DUTY WITH REASONABLE COSTS
- NO LANGUAGE BARRIERS: ENGLISH IS THE OFFICIAL LANGUAGE OF THE BAHAMAS
- NO CURRENCY BARRIERS: THE U.S. DOLLAR IS ACCEPTED EVERYWHERE



direct flights
TO NASSAU

**CITIES WITH DIRECT
FLIGHT TO NASSAU**

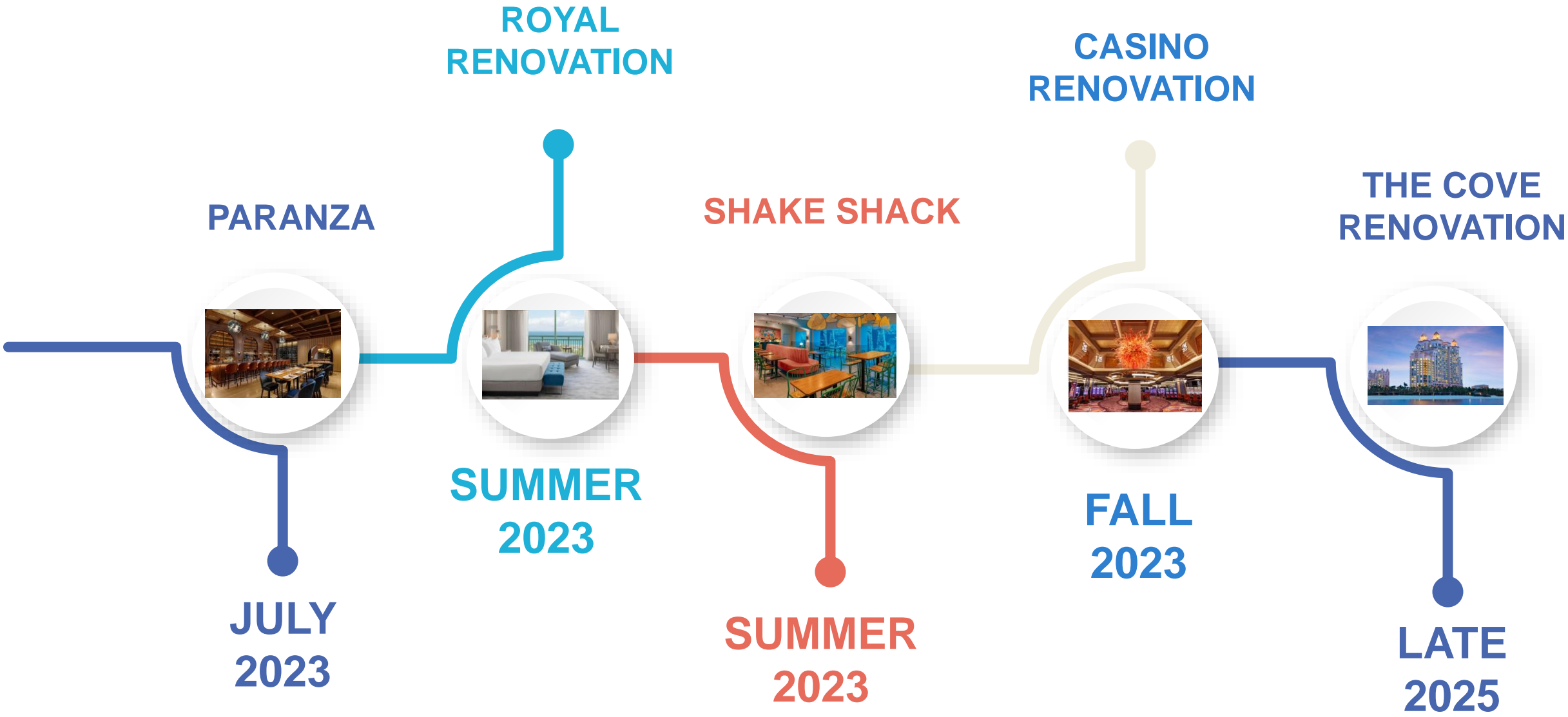
Atlanta	Minneapolis
Baltimore	New York
Boston	Orlando
Charlotte	Philadelphia
Chicago	Seattle
Dallas	Washington DC
Detroit	Calgary
Fort Lauderdale	London
Houston	Montreal
Los Angeles	Panama City
Miami	Toronto



**AIRLINES OPERATING
IN NASSAU**

Air Canada	JetBlue
American	Silver Airways
American Eagle	Sky Bahamas
Bahamasair	Southwest Airlines
British Airways	Sun Country
Copa	Sunwing
Delta	United
	WestJet

Renovations & Resort Updates



four distinct hotels

FOUR EXCEPTIONAL EXPERIENCES



THE REEF – *residential luxury*

THE COVE – *luxury*

THE ROYAL – *upper upscale*

THE CORAL – *premium*



THE
ROYAL
an icon
REIMAGINED

1201 RENOVATED GUESTROOMS AND SUITES
COMPLETED IN **2023**

CENTRALLY LOCATED, IN THE HEART OF THE ACTION

INSPIRED BY THE OCEAN AND BAHAMIAN CULTURE

FRENCH OR FULL BALCONIES WITH WATER, HARBOUR &
TERRACE VIEWS

THE LEGEND BEGINS AS YOU ARE GREETED BY THE
PEGASUS FOUNTAIN AT THE ENTRANCE TO THE
ROYAL

IMMERSE IN THE LEGEND OF ATLANTIS IN THE LOBBY
WHERE MURALS PAINTED BY ALBERT GONZALEZ
SURROUND YOU



REGAL SUITE

THERE ARE 102 REGAL SUITES IN THE ROYAL. THIRTY-ONE SUITES RESIDE IN THE EAST TOWER, SEVEN ON THE IMPERIAL FLOORS, AND SIXTY-FOUR SUITES RESIDE IN THE WEST TOWER

957-1076 FT² | 292-328 M (1 BR)

1692 FT² | 516 M (2 BR)

1 OR 2 BEDROOMS



GRAND SUITE

THERE ARE TEN GRAND SUITES IN TOTAL

EIGHT RESIDE IN THE EAST TOWER, TWO ON
THE IMPERIAL FLOORS

TWO RESIDE IN THE WEST TOWER

1305 FT² | 398 M (1 BR)

1921 FT² | 586 M (2 BR)

1 OR 2 BEDROOMS



ROYAL TOWER SUPER SUITES

FOUR PRESIDENTIALS
THREE ROYAL SUITES
THE BRIDGE SUITE

RANGING IN SIZE FROM 2,154 SQ. FT.
TO
5,000 SQ. FT. FOR THE BRIDGE



THE
COVE
luxury
REDEFINED

600 LUXURY SUITES

ELEGANTLY SITUATED BETWEEN TWO
MAGNIFICENT BEACHES

FLOOR-TO-CEILING OCEAN VIEWS

FRENCH OR FULL BALCONIES

ADULTS ONLY POOL OFFERS 20 PRIVATE
CABANAS, OUTDOOR DINING AND GAMING,
EXCLUSIVE TO COVE GUESTS



AZURE SUITE

THE COVE OFFERS TEN AZURE SUITES

1198 FT² | 365 M (1 BR)

1958 FT² | 597 M (2 BR)

1 OR 2 BEDROOMS



SAPPHIRE SUITE

THE COVE OFFERS TWENTY-SIX SAPPHIRE SUITES

ALL HAVE ACCESS TO LAPIS AT THE COVE

1700 FT² | 518 M (1 BR)

2460 FT² | 750 M (2 BR)

1 OR 2 BEDROOMS



COVE SUPER SUITES

THE COVE OFFERS TWO PRESIDENTIAL SUITES

2751 FT² | 839 M (1 BR)

3511 FT² | 1070 M (2 BR)

ONE PENTHOUSE

4070 FT² | 1241 M (2 BR)

4830 FT² | 1472 M (3 BR)



LAPIS

AT THE COVE

THE NEWLY REIMAGINED LAPIS AT THE COVE IS
THE PREEMINENT, CONCIERGE LEVEL CLUB
LOCATED ON THE 22ND FLOOR

THE CLUB IS EXCLUSIVE TO COVE GUESTS,
AGES 12 AND OVER, STAYING IN A LAPIS CLUB
OCEAN SUITE, SAPPHIRE OR AZURE SUITE

THE CLUB PROVIDES BREATHTAKING OCEAN
VIEWS AND AMPLE ROOM TO GATHER AND
RECONNECT THROUGHOUT THE DAY. FOUR
FOOD SERVICES ARE PROVIDED STARTING WITH
BREAKFAST AND ENDING WITH COCKTAILS AND
DESSERT IN THE EVENING.

A DEDICATED CONCIERGE WILL MAKE
DINNER, GOLF, SPA AND PRIVATE
CABANA RESERVATIONS



THE
CORAL

tropically
MODERN

609 ROOMS & SUITES WITHIN THREE WINGS

FULL BALCONIES OVERLOOKING THE
MARINA, THE ATLANTIS WATERSCAPE
OR ATLANTIC OCEAN

CLOSEST TO THE CONVENTION CENTER,
AND STEPS AWAY FROM MARINA VILLAGE



REGAL SUITE

THERE ARE NINETEEN REGAL SUITES

SIX ARE LOCATED IN THE SHORE WING

THREE IN THE OCEAN WING

TEN IN THE LAGOON WING

546 FT² | 166 M (1 BR)

812 FT² | 247 M (2 BR)

1 OR 2 BEDROOMS



PRESIDENTIAL SUITE

THE CORAL BOASTS 4 PRESIDENTIAL SUITES

600 FT² | 183 M (1 BR)

866 FT² | 264 M (2 BR)

1 OR 2 BEDROOMS



GOVERNOR'S SUITE

THE CORAL OFFERS ONE GOVERNOR'S SUITE

1099 FT² | 335 M

2 BEDROOMS



PENTHOUSE SUITE

THE CORAL OFFERS ONE PENTHOUSE SUITE

SOL KERZNER RESIDED IN THIS SUITE FOR
MANY YEARS

3585 FT² | 1093 M

2 BEDROOMS



THE
REEF
residential
LUXURY

497 RESIDENTIAL-STYLE STUDIOS
AND SUITES SET ATOP MILES OF
SECLUDED BEACH

ALL THE COMFORTS OF HOME WITH AMPLE
SPACE FOR FAMILIES

OCEAN, HARBOUR AND TERRACE VIEWS

STUDIOS FEATURE KITCHENETTES

158 ONE BEDROOM SUITES (947 SQ. FT)
OFFER FULL-SIZE KITCHENS AND LIVING
AREAS



TOPAZ SUITE

THERE ARE THIRTY TOPAZ SUITES
IN THE REEF

1195 FT² | 364 M

1 BEDROOM



PENTHOUSE SUITE

THE REEF BOASTS TWO PENTHOUSE SUITES RESIDING ON
THE 22nd FLOOR

2471-2579 FT² | 753-786 M (2 BR)

2994-3102 FT² | 913-945 M (3 BR)

2 OR 3 BEDROOMS



Convention Center / Hotel Walking Times in Minutes

Location	Convention Center	Coral Towers Lobby	Royal Towers Lobby	Royal Towers East	Royal Towers West	Cove Lobby	Reef Lobby
Convention Center	0	2:00	5:30	6:45	9:00	13:30	15:50
Coral Towers Lobby	2:00	0	3:30	4:45	7:00	11:30	13:50
Royal Tower Lobby	5:30	3:30	0	1:15	3:30	8:00	10:20
Royal Tower East wing	6:45	4:45	1:15	0	2:15	6:45	9:05
Royal Tower West Wing	9:00	7:00	3:30	2:15	0	4:30	6:50
Cove Lobby	13:30	11:30	8:00	6:45	4:30	0	2:20
Reef Lobby	15:50	13:50	10:20	9:05	6:50	2:20	0

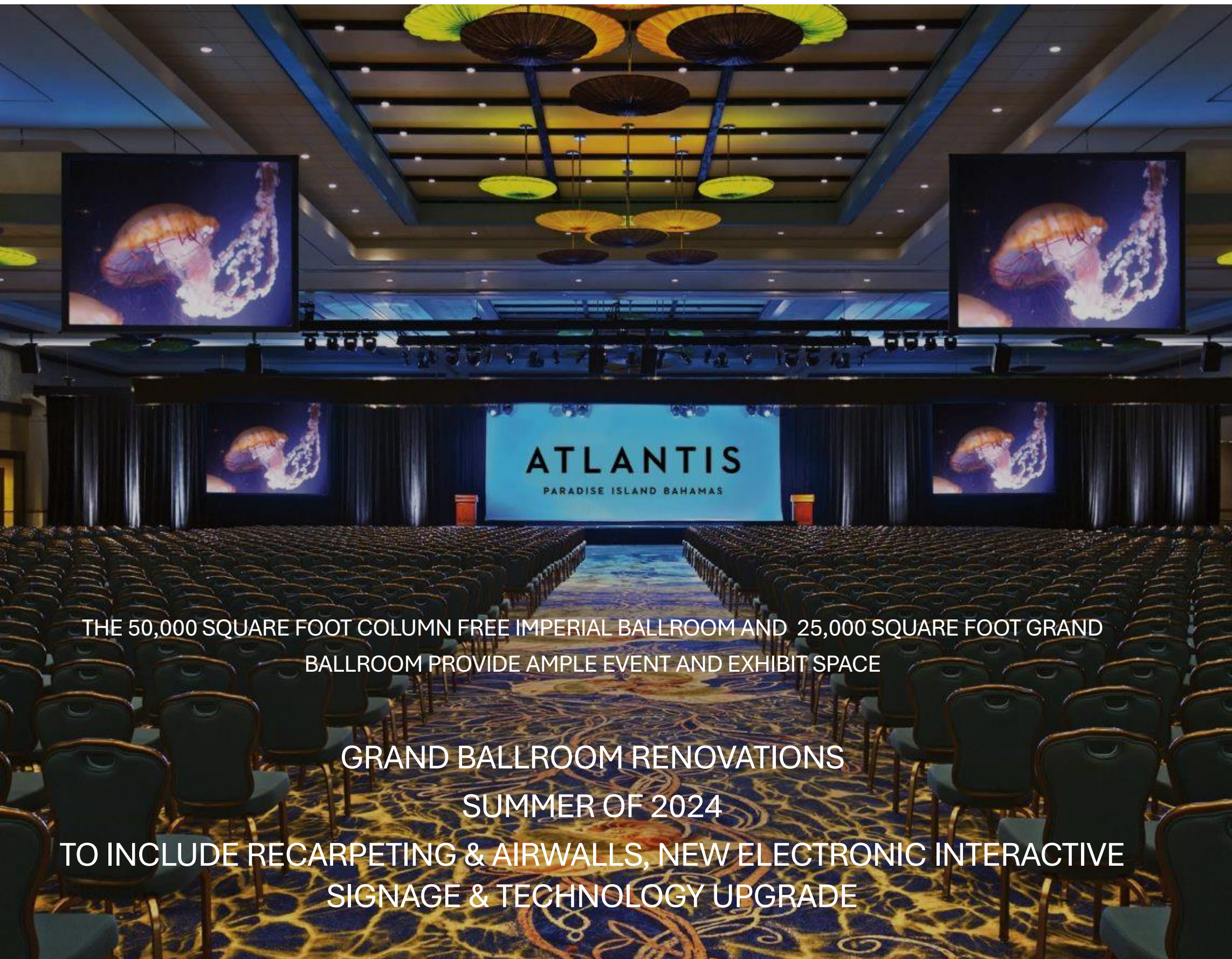


An outdoor dining area at night, featuring numerous round tables set with white and teal tablecloths, white plates, and teal napkins. The tables are surrounded by black chairs with light blue cushions. The area is illuminated by warm white string lights strung across the space. In the background, a large, ornate building with many lit windows and a central archway is visible, surrounded by tall palm trees.

*meeting
spaces*
OF DREAMS

THE LARGEST AND MOST DIVERSE MEETING DESTINATION
IN THE BAHAMAS AND THE CARIBBEAN

500,000 SQ. FT. OF FUNCTION SPACE



THE 50,000 SQUARE FOOT COLUMN FREE IMPERIAL BALLROOM AND 25,000 SQUARE FOOT GRAND BALLROOM PROVIDE AMPLE EVENT AND EXHIBIT SPACE

GRAND BALLROOM RENOVATIONS
SUMMER OF 2024

TO INCLUDE RECARPETING & AIRWALLS, NEW ELECTRONIC INTERACTIVE SIGNAGE & TECHNOLOGY UPGRADE

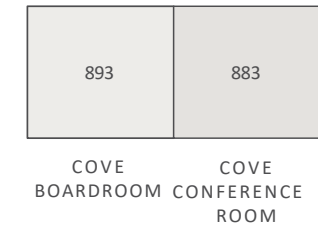


MEETING SPACE DIMENSIONS *and* CAPACITIES

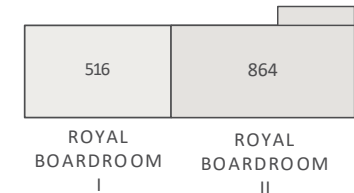
ATLANTIS CONFERENCE CENTER



THE COVE MEETING ROOMS



THE ROYAL MEETING ROOMS



the ROYAL DECK

Max Capacity:

600 - Reception

400 - Sit Down



RIPPLES DECK

Max Capacity:

300 - Reception

250 - Sit Down



ATHLETIC GARDENS

Max Capacity:

600 - Reception

400 - Sit Down



COVE BEACH

Max Capacity:

300 - Reception

200 - Sit Down



it's all in
THE DETAILS

ATLANTIS WILL CUSTOMIZE YOUR EVENT TO SUIT YOUR SPECIFIC
TASTES AND NEEDS



cultural EXPERIENCES

ENJOY CUSTOMIZABLE GROUP EXPERIENCES FROM A JUNKANOO RUSH AND THE ROYAL BAHAMIAN POLICE BAND TO THE NATIONAL YOUTH CHOIR AND MORE



DISCOVER THE NEW ATLANTIS CASINO
FOLLOWING A LANDMARK RENOVATION-
December 2023





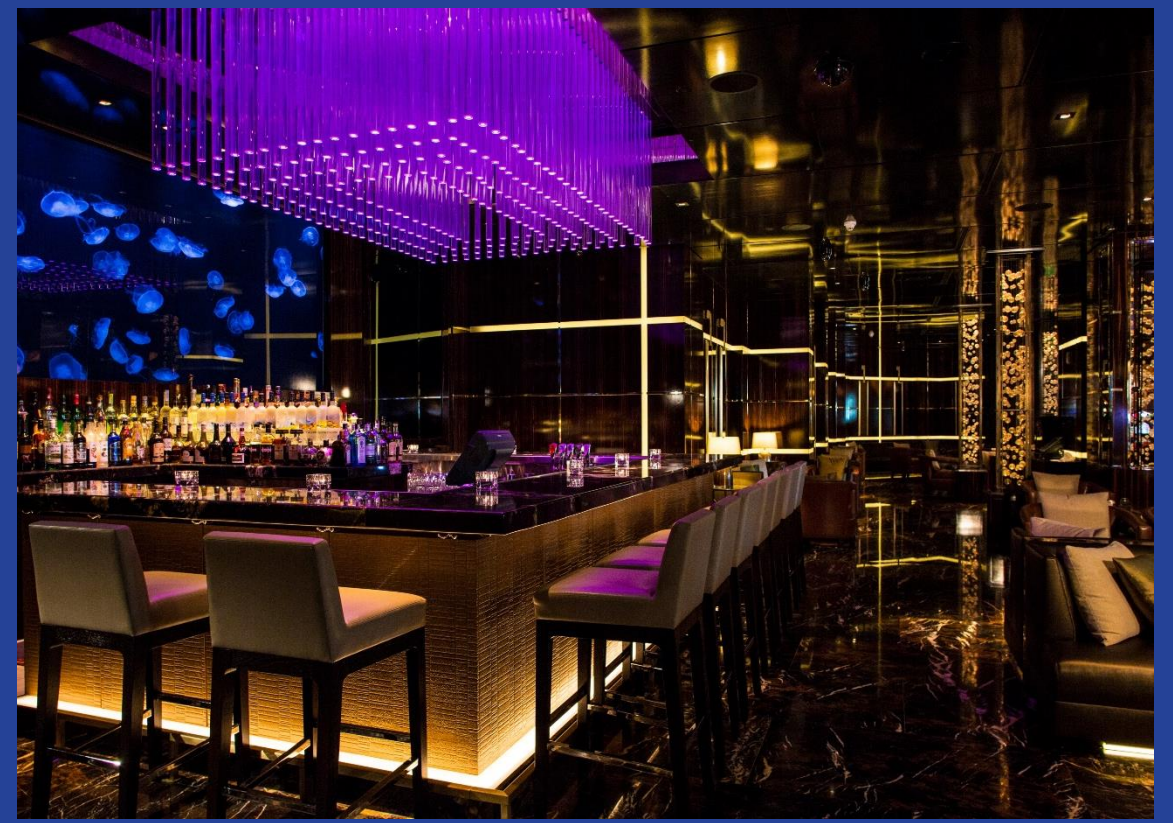
BRINGING A NEW LEVEL OF
SOPHISTICATION TO THE ATLANTIS
CASINO, BAR SOL IS THE ULTIMATE
DESTINATION FOR LIVE MUSIC LOVERS
AND CRAFT COCKTAIL SEEKERS.



THE MOON BAR

• PANTONE 2735 C

ENJOY FEATURED COCKTAILS, AN
EXTENSIVE WINE COLLECTION,
A PLETHORA OF DRAFT BEER OPTIONS
AND A SELECTION OF CIGARS.





AURA

INSIDE THIS 9,000-SQUARE-FOOT SPACE, DANCE THE NIGHT AWAY WITH ATLANTIS' INCREDIBLE DANCERS WHILE FAMOUS DJ'S SPIN YOUR FAVORITE TUNES. THE ULTIMATE VIP NIGHTCLUB EXPERIENCE AWAITS!



the flavours ARE INFINITE

THE CULINARY CAPITAL OF THE CARIBBEAN WITH A
MULTITUDE OF DINING & ENTERTAINMENT OPTIONS,
INCLUDING
3 MICHELIN-STARRED CHEF RESTAURANTS.

signature DINING





NOBU FEATURES WORLD RENOWNED JAPANESE
CUISINE BY CELEBRATED
CHEF NOBU MATSUHISA. ENJOY CLASSIC DISHES,
INCLUDING MAIN LOBSTER CEVICHE, ROCK SHRIMP
TEMPURA, AND BLACK COD BUTTER LETTUCE





MICHELIN-STARRED CHEF JOSE ANDRES OFFERS THE FRESHEST BAHAMIAN SEAFOOD INFUSED WITH INNOVATIVE AND CREATIVE FLAVORS, SKILLFULLY TRANSFORMED INTO MEMORABLE DISHES.



PARANZA

PARADISE ISLAND, BAHAMAS

PARANZA BY MICHELIN-STARRED CHEF
MICHAEL WHITE IS A LOVE LETTER TO ITALY
THAT OFFERS
ITALIAN REGIONAL CUISINE WITH A
PASSIONATE FOCUS ON SEAFOOD.





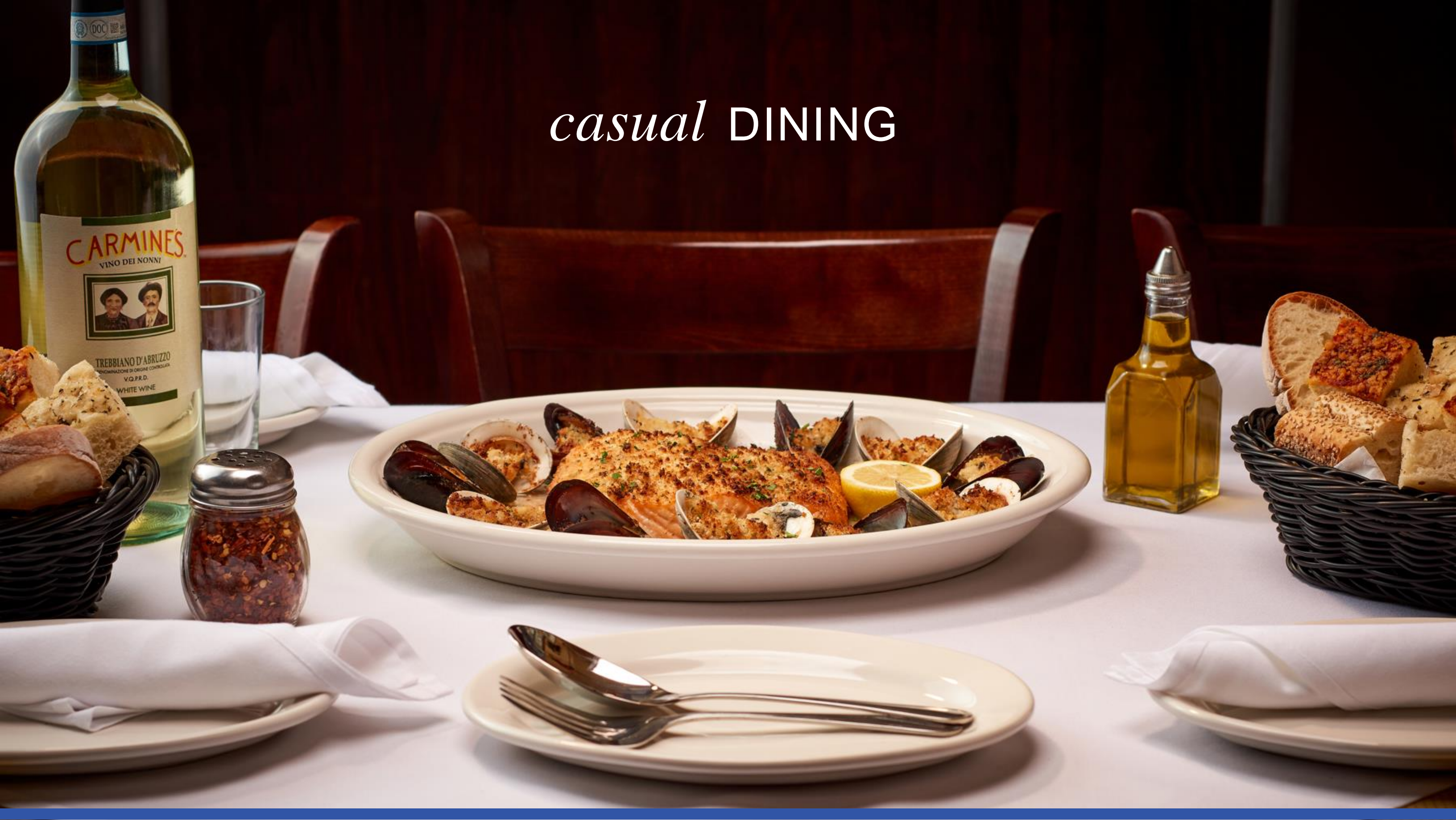
CHEF ADRIEN DELCOURT, FORMERLY FROM PARIS' CELEBRATED JULES VERNE RESTAURANT IN THE EIFFEL TOWER, BRINGS HIS CULINARY TALENTS TO THIS LEGENDARY RESTAURANT

MEDITERRANEAN-INSPIRED CUISINE PREPARED WITH LOCALLY SOURCED BAHAMIAN INGREDIENTS

SECOND STORY OUTDOOR PATIO OFFERS PICTURESQUE SUNSETS WITH VIEWS OF THE ATLANTIS MARINA



casual DINING



Silan

MEDITERRANEAN

THIS NEW MEDITERRANEAN-INSPIRED RESTAURANT PAYS HOMAGE TO CHEF ALON SHAYA'S ISRAELI HERITAGE WITH A NOD TO BAHAMIAN FLAVORS.

LOCATED IN THE ATLANTIS CASINO.



CHOP STIX

CHINESE BBQ, DIM SUM, ASIAN SALADS,
WOK DISHES AND EXCITING SIGNATURE CUISINE FROM
MALAYSIA, SINGAPORE AND INDONESIA
FOR THE CULINARY ADVENTURER



MARINA
VILLAGE
— ATLANTIS —



RIVALING MONTE CARLO, ATLANTIS MARINA IS A PREMIER YACHTING DESTINATION WITH 63 SLIPS THAT CAN ACCOMMODATE UP TO 200 FT. VESSELS. LOCATED NEXT TO MARINA VILLAGE WHERE SEAFARERS AND GUESTS CAN ENJOY SHOPPING, DINING AND ENTERTAINMENT NIGHTLY.



CARMINE'S





A MODERN STEAKHOUSE AMBIANCE WHERE RICH, SMOKED, SEARED AND GRILLED FLAVORS OF SUCCULENT FARE AWAIT YOUR DISCOVERY



CARMINE'S

A FAMILY STYLE RESTAURANT OFFERING EXCEPTIONAL VALUE TO ITS GUESTS THROUGH THE MANY DISHES OF SOUTHERN ITALIAN CUISINE

RESTAURATEUR ARTIE CUTLER CRAFTED CARMINE'S WITH A SINGULAR VISION; BRINGING HIS GUESTS "WOW-FACTOR" SIZED PORTIONS AND MAKING ANY MEAL FEEL LIKE AN ITALIAN FEAST





A MODERN, DOCKSIDE PIZZERIA SERVING TRADITIONAL
PIZZA PIE BY THE SLICE OR BY
THE FULL PIE

LOCATED ADJACENT THE SUPER YACHTS IN THE ATLANTIS
MARINA

DAILY FRESH SIGNATURE SALADS

APPETIZERS

DESSERTS

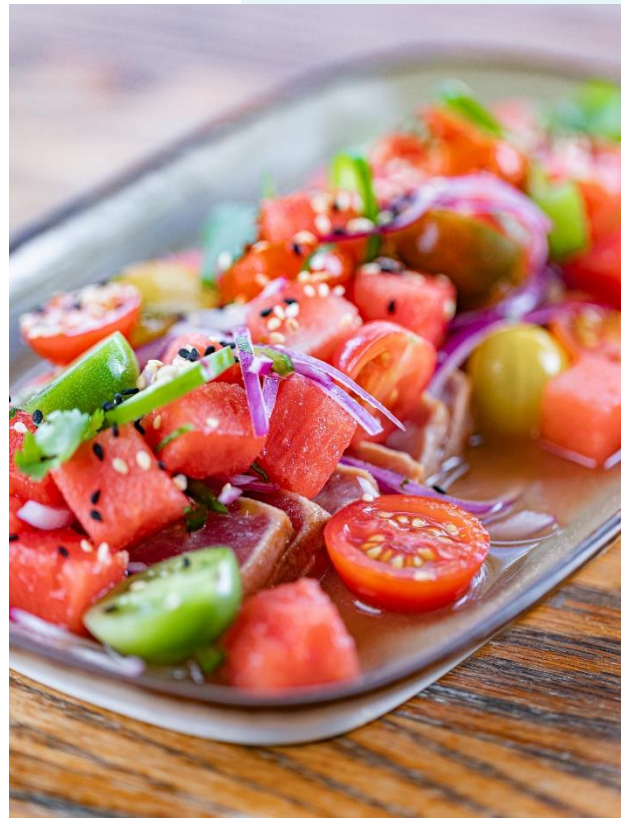
ICE COLD BEVERAGES

KIDS' MENU



Bimini ROAD

ENJOY "LOCALS-ONLY" FAVORITES LIKE CONCH SALAD, AND AN ARRAY OF FRESHLY LANDED SEAFOOD, LOCAL BEERS, TROPICAL JUICES AND DELICIOUS COCKTAILS.





CLASSIC NEW YORK-STYLE DELICATESSEN
FEATURING A BROAD MENU

HOME TO THE DELECTABLE MURRAY'S DONUTS
OFFERING AN AMAZING SELECTION OF FLAVORS

OPEN FOR BREAKFAST, LUNCH AND DINNER

A VARIETY OF VEGETARIAN OPTIONS

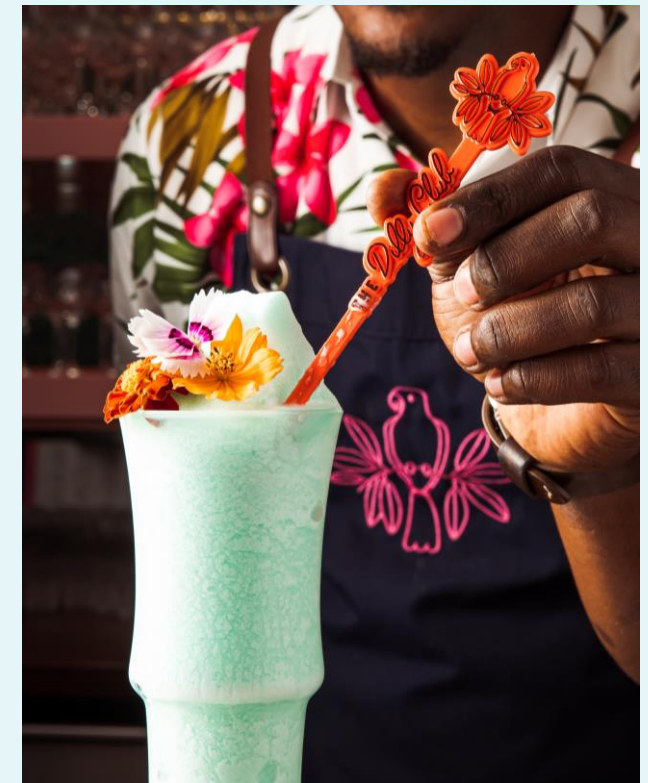
TRADITIONAL OVERSTUFFED SANDWICHES





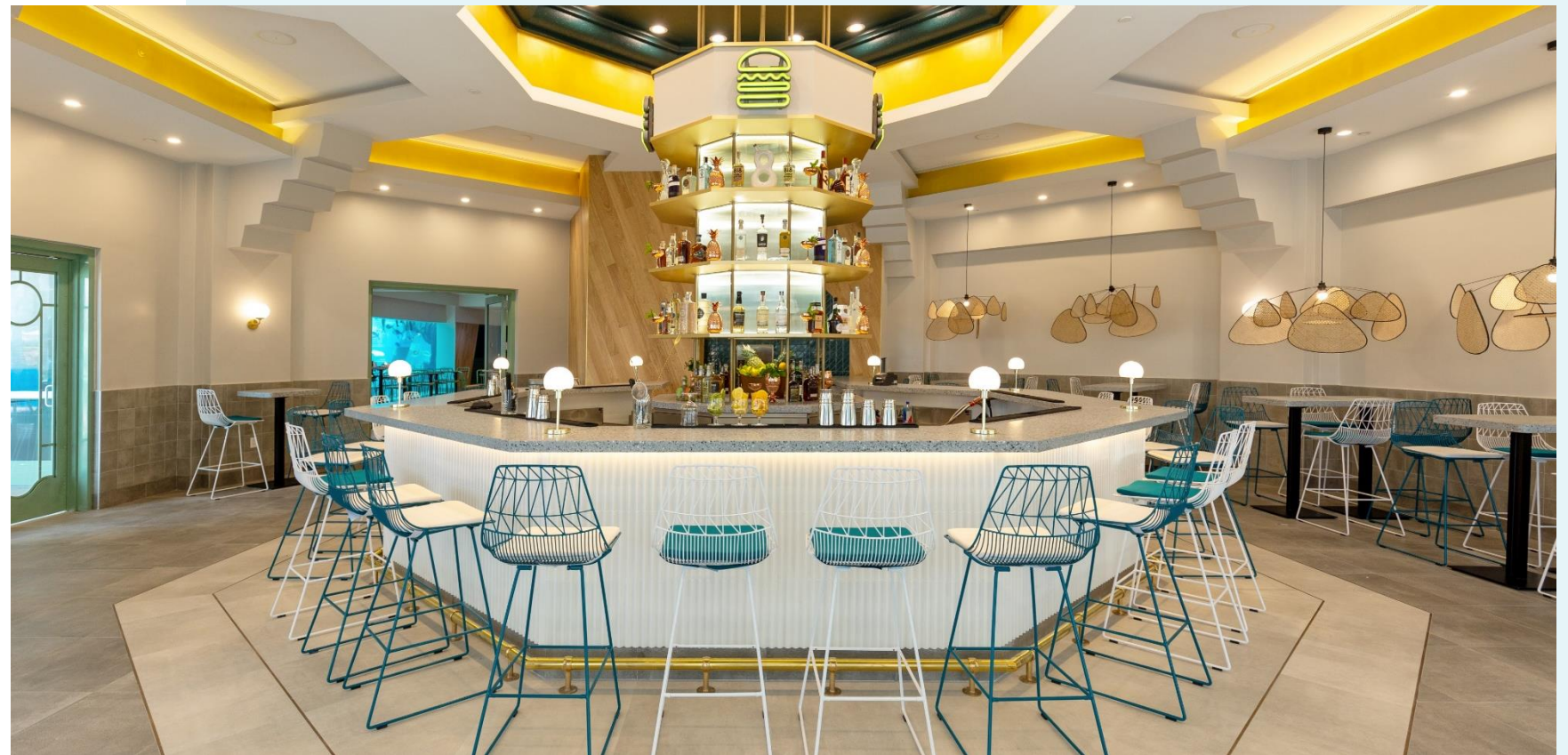
A NEW UPSCALE DESTINATION FOR
SPECIALTY COFFEES BY DAY AND
ELEVATED MIXOLOGY BY NIGHT.
THE DILLY CLUB IS AN URBAN ESCAPE
WITH A RELAXED CARIBBEAN VIBE

THE PERFECT ADDITION TO
MARINA VILLAGE.





SHAKE SHACK IS KNOWN FOR ITS DELICIOUS MADE-TO-ORDER ANGUS BEEF BURGERS, CRISPY CHICKEN, HAND-SPUN MILKSHAKES, HOUSE-MADE LEMONADES, BEER, WINE, AND MORE.





OPEN FOR LUNCH

LOCATED NEAR THE COVE POOL,
FREZCA SPECIALIZES IN LIGHT,
HEALTHY COASTAL CUISINE INSPIRED
BY LOCAL INGREDIENTS AND
GLOBAL INFLUENCES.



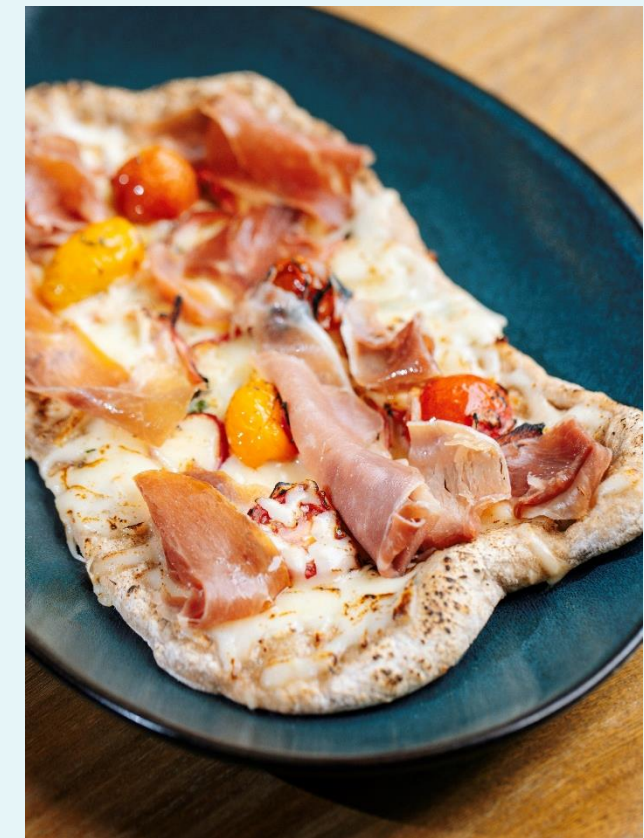


PERCH

BAHAMAS

OPEN FOR BREAKFAST

A NEW TAKE ON SUNRISE DINING IN A
RELAXED, WELCOMING LOCATION
WITH INNOVATIVE MENUS SERVING
MARKET FRESH INGREDIENTS WITH
GLOBAL FLAVOR INFUSIONS.





MOUTHWATERING PITAS,
BOWLS, SALADS AND MEZZE
MADE FROM SCRATCH EACH
DAY, WITH THE BEST
INGREDIENTS, SPICES AND
TIME-HONORED TECHNIQUES OF
MEDITERRANEAN COOKING.



—POSEIDON'S TABLE

A BOUNTIFUL BREAKFAST BUFFET WITH AN ARRAY OF
MORNING FAVORITES

DINNER OFFERS ECLECTIC CUISINE

- A MEXICAN GRILL STATION FEATURING FRESHLY MADE
TORTILLAS
- A TANDOORI OVEN SERVING INDIAN FAVORITES
 - JAPANESE SUSHI STATION
 - TRADITIONAL MEAT CARVING STATION



a world
OF EXPERIENCE

AN UNRIVALLED ARRAY
OF ACTIVITIES AND ADVENTURES



DOLPHIN CAY

EXPLORE THE WORLD'S LARGEST OPEN-AIR MARINE HABITAT AND DISCOVER DOLPHIN CAY'S EXTRAORDINARY ENVIRONMENT AND MARINE MAMMAL INTERACTION PROGRAMS. DOLPHIN CAY IS ONE OF THE MOST SOPHISTICATED MARINE HABITATS IN THE WORLD WITH THE CARIBBEAN'S PREMIER MARINE LIFE RESCUE AND REHABILITATION FACILITY.

PLAYTIME WITH SEA LIONS

MEET SOME OF THE PLANET'S MOST ADORABLE ANIMALS IN THIS FUN-FILLED EXPERIENCE. OUR MARINE LIFE EXPERTS TAKE YOU BEHIND THE SCENES AND SHARE HOW WE FEED AND CARE FOR OUR BELOVED FAMILY OF SEA LIONS. YOU'LL EVEN GET THE CHANCE TO TAKE A DIP WITH A SEA LION IN A ONE-OF-A-KIND, OUT-OF-THIS-WORLD ADVENTURE.





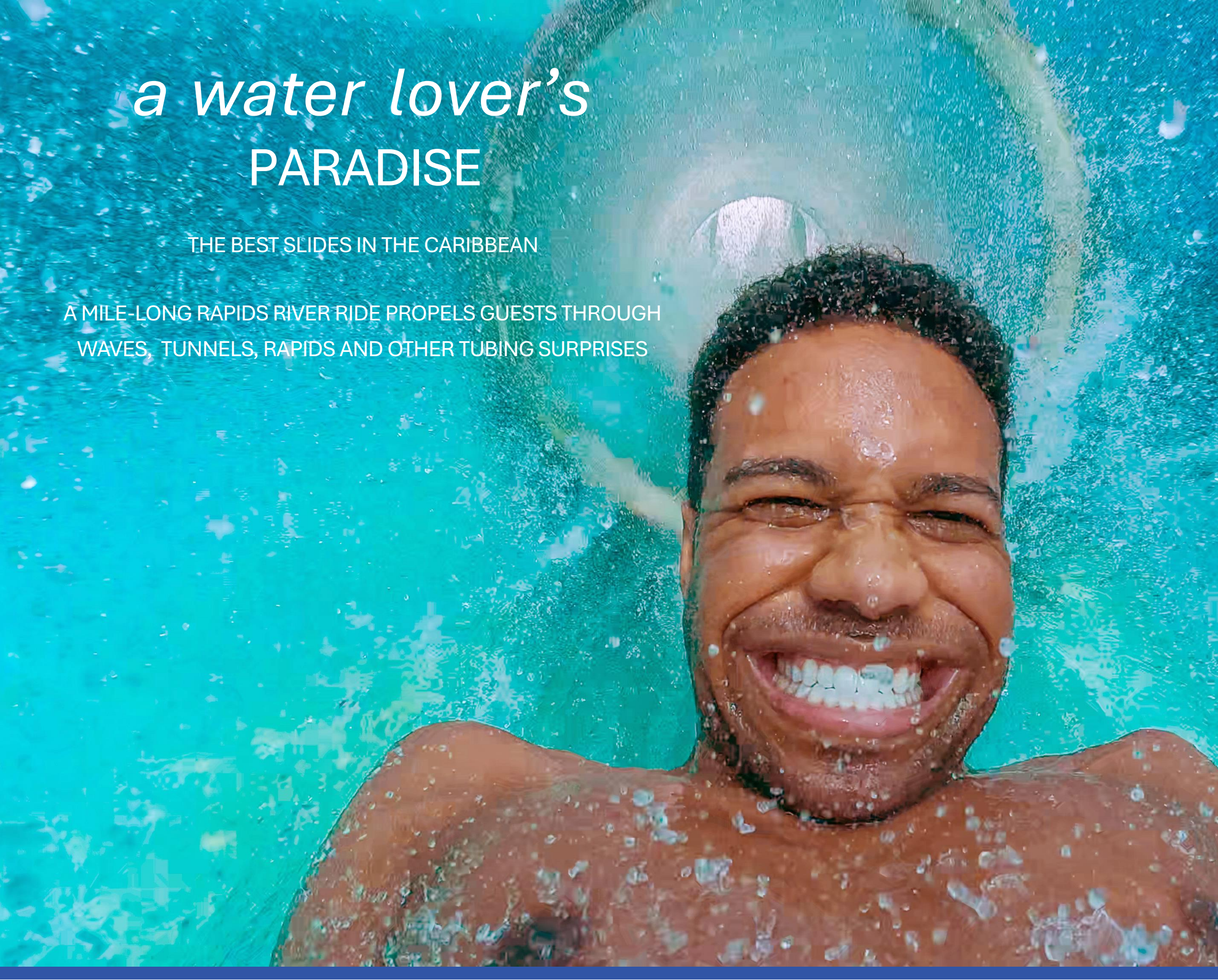
an ocean
AT YOUR FINGERTIPS

14 LAGOONS, 8 MILLION GALLONS OF OCEAN
WATER AND MORE THAN 50,000 AQUATIC
ANIMALS REPRESENTING
OVER 250 MARINE SPECIES

a water lover's PARADISE

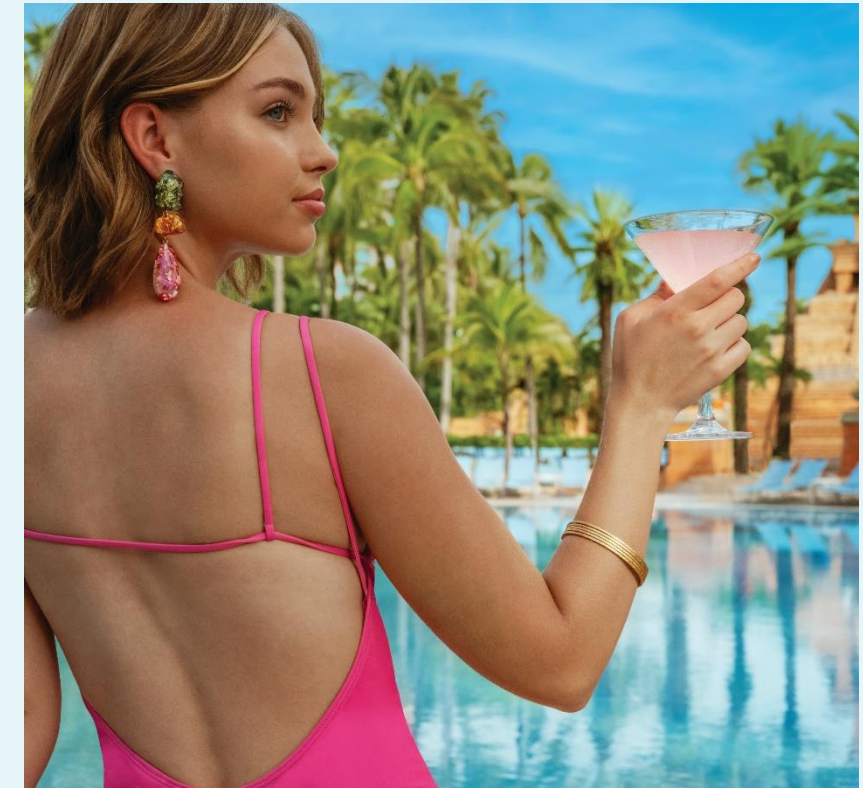
THE BEST SLIDES IN THE CARIBBEAN

A MILE-LONG RAPIDS RIVER RIDE PROPELS GUESTS THROUGH WAVES, TUNNELS, RAPIDS AND OTHER TUBING SURPRISES



fun
UNDER THE SUN

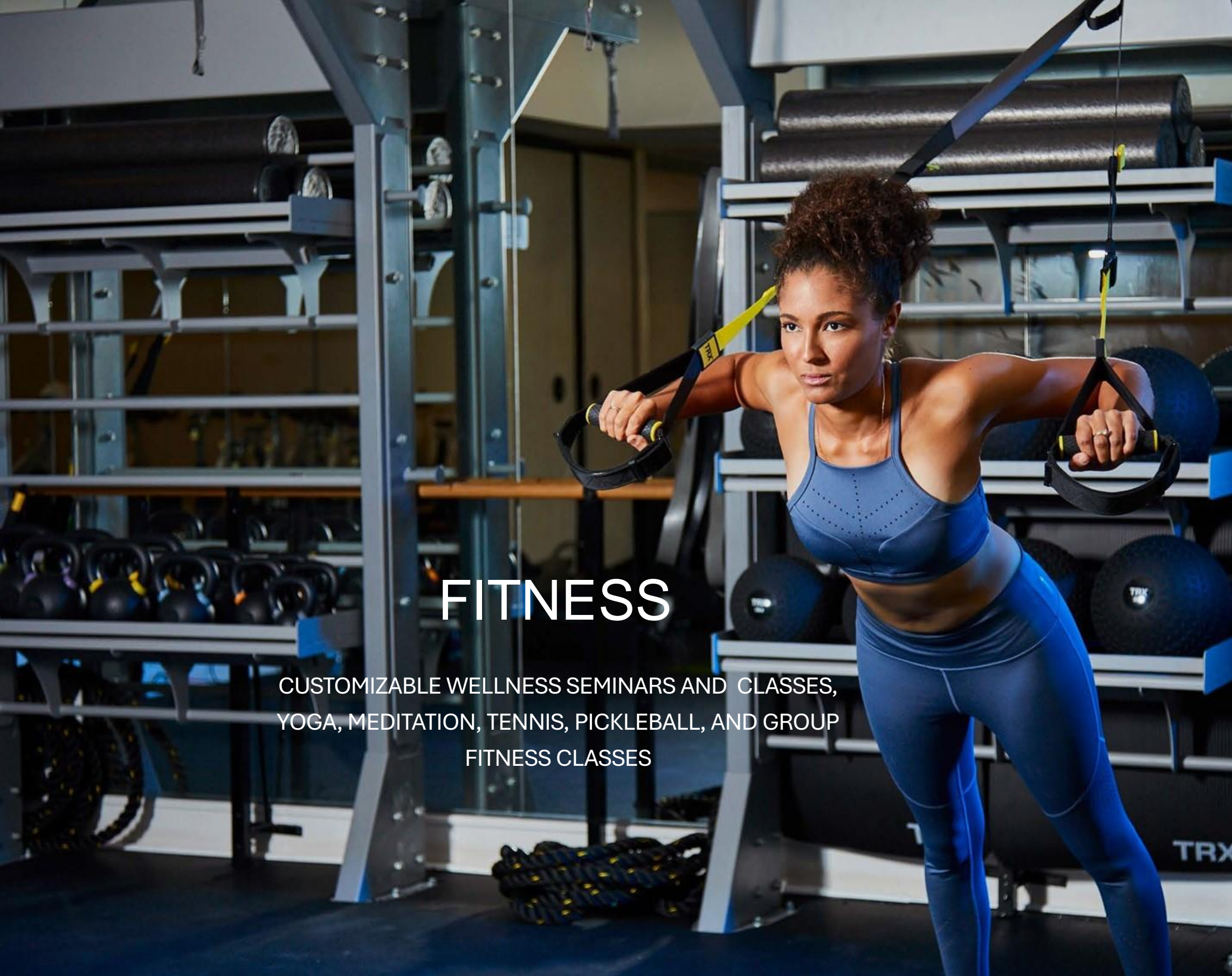
UNCOVER 5 MILES OF PRISTINE BEACHES, UNWIND AT
ONE OF 11 POOLS, AND INDULGE FOR THE DAY IN A
PRIVATE CABANA



a beach lover's
PARADISE

UNCOVER 5 MILES OF PRISTINE, WHITE SAND BEACHES





FITNESS

CUSTOMIZABLE WELLNESS SEMINARS AND CLASSES,
YOGA, MEDITATION, TENNIS, PICKLEBALL, AND GROUP
FITNESS CLASSES



the
MANDARA SPA

BLENDING EUROPEAN TRADITIONS, BALINESE TREATMENTS
AND NATURAL ELEMENTS UNIQUE TO THE BAHAMAS

GROOMING SERVICES FOR LADIES & GENTLEMEN

36 PRIVATE TREATMENT ROOMS



OCEAN CLUB GOLF COURSE

18-HOLE PAR-72 CHAMPIONSHIP COURSE

DESIGNED BY TOM WEISKOPF





CRUSH TEEN CLUB

TEENS 13 - 17 CAN ENJOY ATLANTIS NIGHTLIFE FROM 8:00 PM TO MIDNIGHT IN A CLUB JUST FOR THEM. THE DANCE CLUB HAS THREE RAISED AREAS WITH SEATING, A SUNKEN DANCE FLOOR AND LIVE DJ.

GAMERS CAN PLAY THE NIGHT AWAY AT A 360 DEGREE GAMING TREE OR IN A GAMING CABANA OR PLAY THEIR FRIENDS AT BOARD GAMES, AIR HOCKEY AND FOOSBALL

UNIQUE LOCATION FOR GROUPS, WHETHER DOING AN EVENING EVENT OR UTILIZING THE CRUSH EQUIPMENT TO DEVELOP A THEMED EVENT.



upcoming

ENTERTAINMENT

**MARCH
13-17TH**



**NASSAU PARADISE ISLAND
WINE & FOOD
FESTIVAL**
A Culinary Showcase

**JANET JACKSON
LIVE IN CONCERT**

The Legendary Janet Jackson
Performs Live in Paradise



APRIL 27TH

JULY 13TH



**CHRISTINA AGUILERA
LIVE IN CONCERT**
Grammy Award-Winning
Singer/Songwriter Christina Aguilera
Makes Waves On Casurina Beach

BATTLE 4 ATLANTIS

NCAA Men's & Women's
Basketball Tournament



**NOVEMBER
23-29TH**

**DECEMBER
31ST**



PARTY LIKE A ROYAL
New Year's Eve Celebration

NASSAU PARADISE ISLAND

WINE & FOOD FESTIVAL

PRESENTED BY
ATLANTIS



MARCH 13 - 17

TICKETS ON SALE

NPIWFF.ORG



**JANET
JACKSON**
APRIL 27

**MUSIC
MAKING
WAVES**
ATLANTIS BAHAMAS

ATLANTIS

TICKETS ON SALE
ATLANTISLIVE.COM



**JOIN US IN PARADISE
THANKSGIVING WEEK 2024**

Battle4Atlantis.com

POINTS *of* INTEREST



NASSAU IS THE CAPITAL OF THE BAHAMAS,
FULL OF CULTURE AND ART

EXPLORE LOCAL HISTORICAL SITES,
ART GALLERIES, AUTHENTIC BAHAMIAN CUISINE AND DUTY-
FREE SHOPPING

SHOPPING

BAHAMA HAND PRINTS
STRAW MARKET
BAY STREET SHOPS

ART

POMPEY MUSEUM
NATIONAL ART MUSEUM
JUNKANOO WORLD MUSEUM
HILLSIDE HOUSE STUDIO & ART GALLERY
DOONGALIK STUDIOS ART GALLERY

LANDMARKS

THE CLOISTERS, PARADISE ISLAND THE
QUEEN'S STAIRCASE
FORTS CHARLOTTE, FINCASTLE AND MONTAGU
PARLIAMENT SQUARE

LOCAL FLAVOR

GRAYCLIFF CIGAR FACTORY JOHN
WATLING'S DISTILLER PIRATES OF
NASSAU

SALES TEAMS



Steve Silverman
Senior Vice President, Sales

LEISURE SALES



Gabriela Lam
VP, Leisure Sales

GROUP SALES



Ted Adderley
VP Residential Services



Tom Foley
Executive Director
National Accounts

WEDDINGS & SPECIAL OCCASIONS



Jena Conway
Director of WSO



Erica Valbuena
Dir, of Leisure Sales International



Megan Prieto
Dir, Leisure Sales



Nina Schectman
Dir, Leisure Sales



TBD
Leisure Sales Manager



Karen Cargill
Dir, Leisure Sales



Andrew Neubauer
Dir, National Accounts



Brecken Clifton
Dir, National Accounts



Douglas Caldwell
Dir, National Accounts



Ginny Long
Dir, National Accounts



Katy Rosuck
Dir, National Accounts



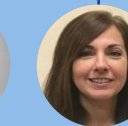
Kingsley Egbuchunam
Dir, National Accounts



Liliana Dale
Dir, National Accounts



Sharon Jacques
Dir, National Accounts



Suzanne Strealy
Dir, National Accounts



Kayla Brown
Associate Director of Sales



Louise Dorsett
Sales Manager



Nicanor Saleta
Sales Manager



Haydee Soto
Sales Analyst



Jack Benggio
Delphi Key Op



Karen Meeks
Group Sales Coordinator



Sara Pridham
Group Sales Coordinator



Destinee Boudlal
Manager WSO



Dorian Vinderine
Director, Sapphire Services



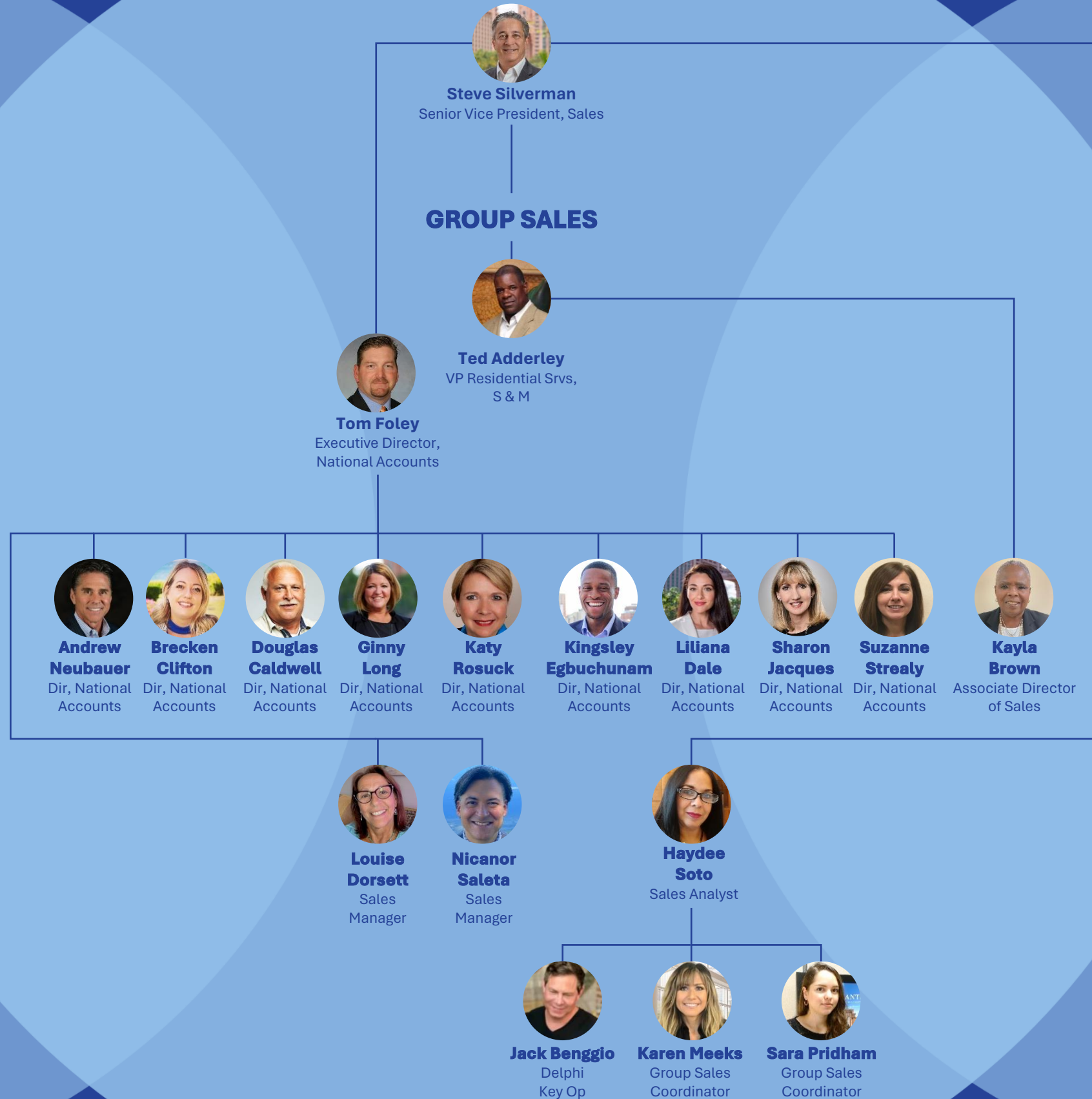
Miyoshi Jules
Manager WSO



Naomi Richter
Manager WSO



Daniela Carrera
Leisure Sales Coordinator

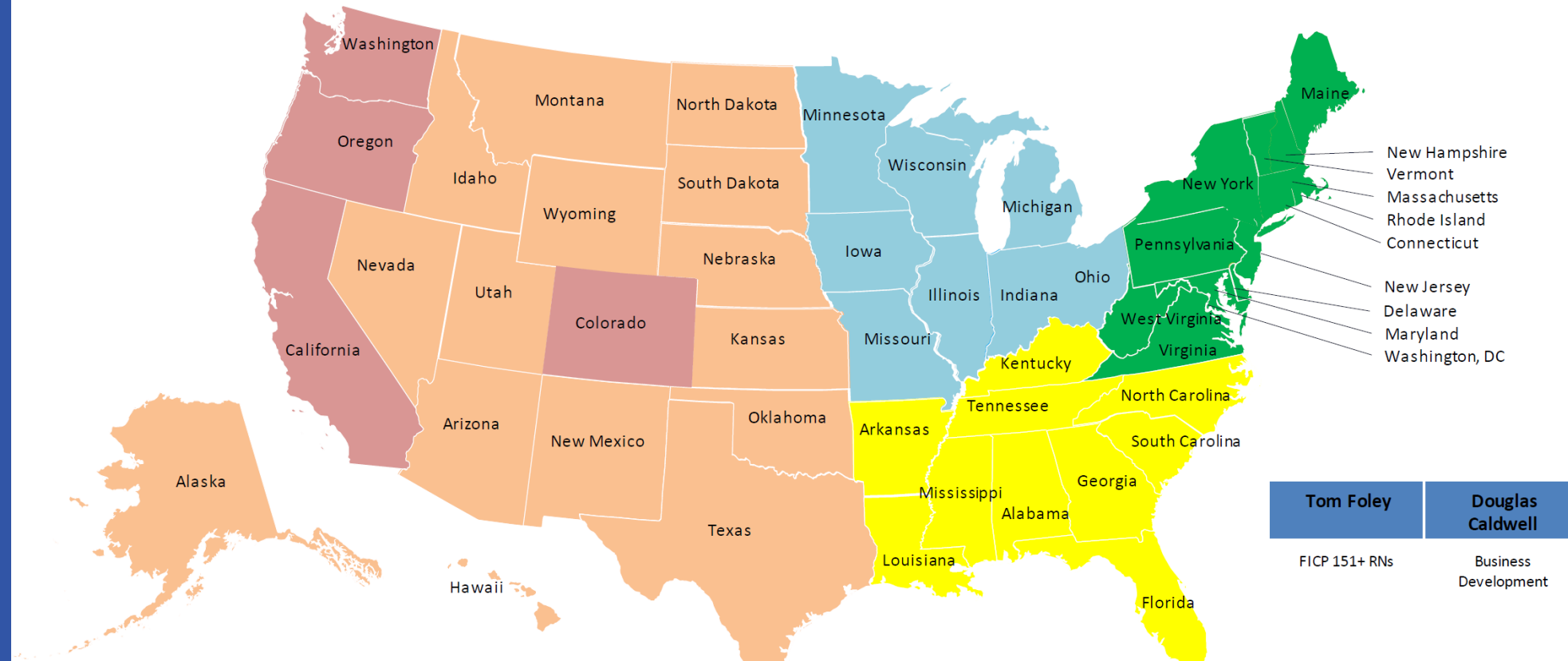


GROUP SALES TERRITORIES

41+ Peak RNs

ATLANTIS

PARADISE ISLAND BAHAMAS



Tom Foley	Douglas Caldwell
FICP 151+ RNs	Business Development

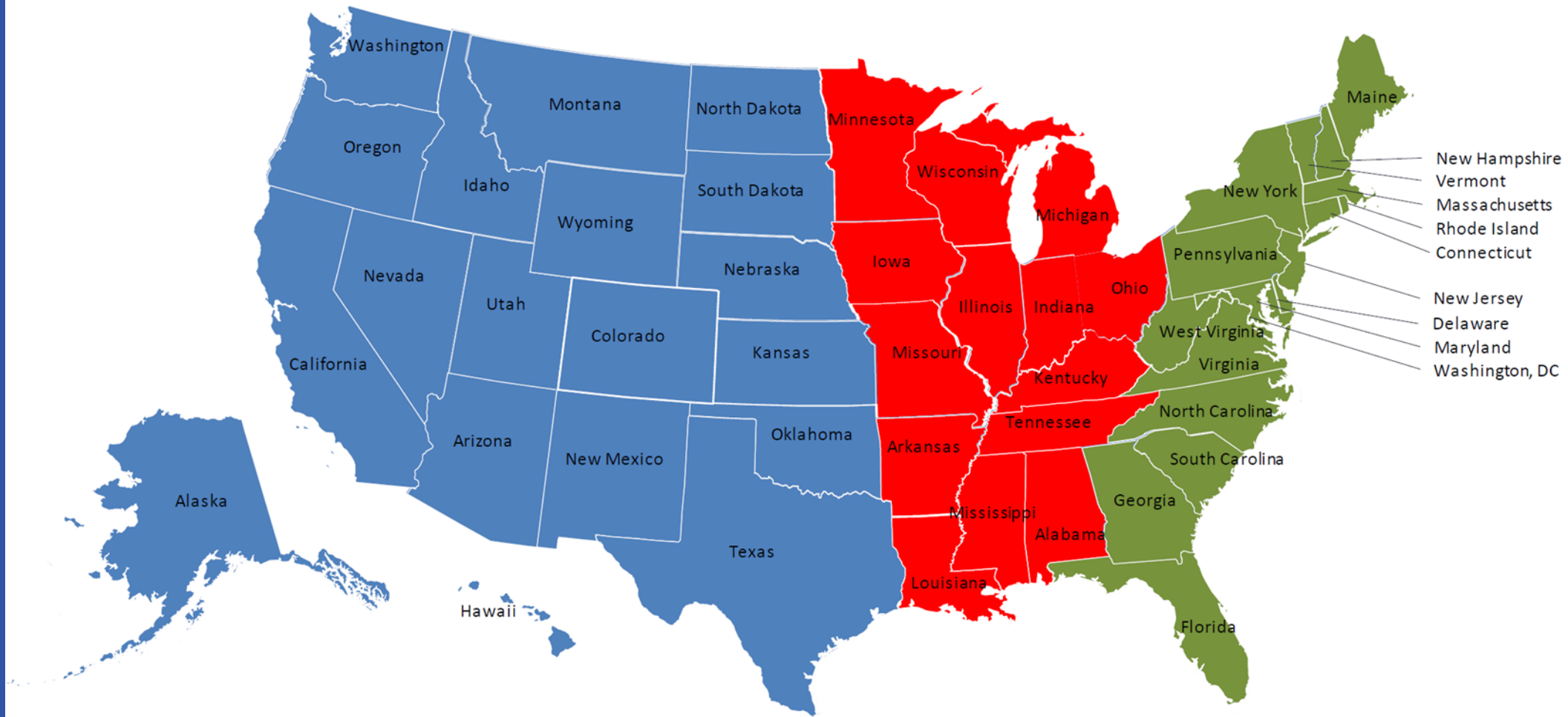
Liliana Dale	Sharon Jacques	Ginny Long	Suzanne Streatly	Andrew Neubauer	Louise Dorsett	Katy Rosuck	Kingsley Egbuchunam	Brecken Clifton
10+ RNs Europe & Canada 10+ up to 40 RNs U.S - West Coast	HPN Medical Education Resource (MER) Direct Selling Associations	41+ Territory Captive Resources FICP 41 up to 150 RNs	41+ RNs Southeast	BI Performance Group / Prestige ITAGroup / One10 / NHS Maritz-Experient / Bishop McCane BCD Meetings & Incentives MotivAction/BrightSpot Gavel International / Direct Travel Creative Group, Inc / AMEX Motivation Excellence / Mid-WestOffice CWT / Morley / ALTOUR Meetings & Incentives Worldwide	10 – 40 RNs (East Coast) 10+ up to 200 TOTAL RNs Mexico, Central and South America Battle for Atlantis Men's & Women's Summer Basketball Bowl Bahamas Bowl	151+ RNs Northeast Blue Star Inc. Alix Partners Planet Fitness	41 up to 150 RNs Northeast	41 + RNs Colorado & West Coast
		Nick Saleta						
		10 – 40 RNs U.S – Midwest & Southwest						

GROUP SALES TERRITORIES

Small Groups - 10+ to 40 Peak RNs

ATLANTIS

PARADISE ISLAND BAHAMAS



LILIANA DALE	NICK SALETA	LOUISE DORSETT
---------------------	--------------------	-----------------------

<p>10+ RNs Europe & Canada 10+ up to 40 RNs U.S - West Coast</p>	<p>10+ up to 40 RNs U.S – Midwest & Southwest</p>	<p>10+ up to 40 RNs U.S – East Coast 10+ up to 200 TOTAL RNs Mexico, Central and South America</p>
--	--	--

GROUP SALES TERRITORIES

ATLANTIS

PARADISE ISLAND BAHAMAS

Ted Adderley
International
 Excluding: Europe & Canada

10+ RNs
Caribbean
201+ TOTAL RNs
Mexico, Central and South America

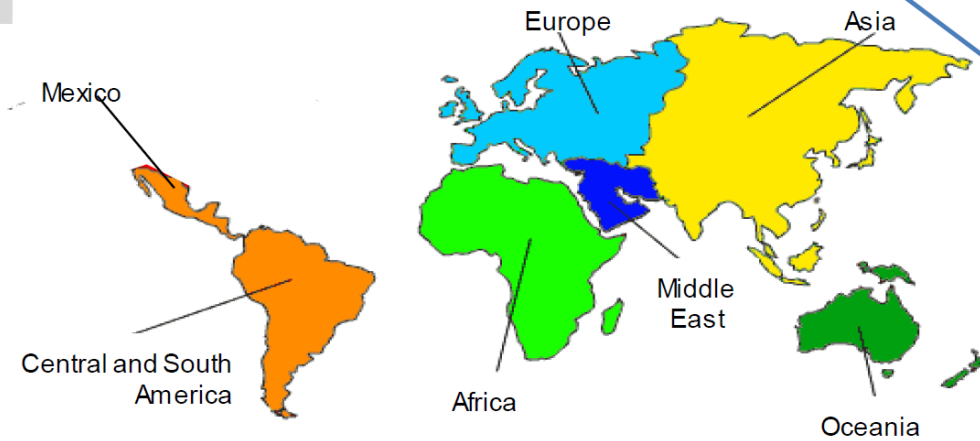


Liliana Dale
INTERNATIONAL
 Europe & Canada
 U.S small groups West Coast

10+ RNs
 Europe & Canada
 10+ up to 40 RNs
 U.S - West Coast

Louise Dorsett
 Mexico, Central and South America

10+ up to 200 TOTAL RNs
Mexico, Central and South America



Revised: March 2023

- **ATLANTIS HOTEL SELLING STRATEGY BY TOWER**

- **The Coral** - Smaller hotel feel, moderately priced, mostly double queen beds, closest to conference center. Works well for staff and production accommodations, meeting focused programs, and low tier incentives. Easy access to Marina Village for dining and shopping, Casino. Coral pool features poolside cabanas, swim-up bar, and short short walk to the ocean. Full sit out balconies. Challenges: Older tower.
- **The Royal** is the center of the resort and Royal is architecturally iconic. Recently renovated. Completed 2023. Rooms face the waterscape and Nassau harbor. Great for incentives that need all rooms with virtually the same view. Large sales meetings. Café at the Great Hall offers the most unique branding opportunities for hospitality. Connected to the Casino, the heartbeat of the nightlife at Atlantis. Close to AquaVenture, Spa, fitness center and Dolphin Cay. Challenges: Size
- **The Cove** offers sophisticated and upscale accommodation experience. Oversized mostly King beds open floor plan suites – all facing the Ocean. Guests have exclusive access to adults-only pool, and beach cabanas. Challenges: Minimal meeting space. Boardrooms. Access to conference center via shuttle or short walk.
- **The Reef** offers residential-style luxury amenities. Newly renovated, mostly King bedded studios, that offer a kitchenette or full-kitchen. Good option for groups looking for smaller luxury resort experience without the Cove price tag and not looking for access to the Cove pool experience. Works well for Cove overflow for large groups. Challenges: No access to Cove Pool, furthest tower from event space.

F.A.Q

Does Atlantis offer a Group All Inclusive Package?

Atlantis is not an all-inclusive Resort; we are a full-service Resort which includes many complimentary amenities including Aquaventure water park which features 11 water slides, our mile-long Rapids River, our protected Paradise Lagoon, The Dig, the Predator Lagoon, all of our marine life habitats, and 6 inviting beaches over 5 miles long. Beach towels are provided daily at Aquaventure Guest Service locations at no charge. All other Atlantis services such as the Mandara Spa, the Comedy Club, Dolphin Cay and our Business Center, are for all guests to enjoy for a nominal fee.

Group Meal and Beverage plans are available based on time of year and size of group. Our other option is to provide group room credits for group guests to use at their leisure. Current meal plans available on CVENT docs.

What is the weather like in the Bahamas/seasonality?

The climate in the Bahamas is sub-tropical. Average temperatures range between 70 to 90 degrees Fahrenheit. Typically, the rainy season is from June through November, which is also hurricane season in South Florida and the rest of the Caribbean region. However, based on where New Providence and Paradise Island are located in the chain of 700 Bahamian islands, we have been very fortunate to have not sustained as many major storms as Florida historically.

Our high season is Festive (Christmas/New Years), President's weekend/Winter Break in February through Easter and Passover. May and early June is Shoulder, June 15 through August 15 is high demand summer vacation time period, Mid August through September lowest while kids go back to school, October – Mid December Shoulder.

We have heard comments that there are a lot of cruise ship passengers during the day at Atlantis?

We welcome day visitors to spend time in our casino and marina village shopping and dining area however, they are prevented from entering the Royal lobby from the Casino. We do sell a limited amount of day passes based on resort occupancy, which are currently priced at \$255.00 adults/ \$140.00 children 4-12 yrs. This includes all day access to Aquaventure pools, beaches, slides, and aquariums.

Does Atlantis have a Resort Fee? \$70.00 Cove and REEF and \$65.00 Royal and \$59.00 Coral per room per day + 10% VAT

The Daily Resort Fee includes the following:

- Daily Access to Aquaventure Water Park.
- Unlimited access throughout your stay to The Dig, Predator Tunnel, and the largest open-air marine habitat in the world with over 50,000 marine animals from 250 species.
- Access to view fish and marine animal feedings.
- Wi-Fi All Access (in guest rooms and lobby areas for four (4) devices; six (6) devices at The Cove and The Reef.
- Daily Access to Fitness Center for two (2) entitles guests to complimentary use of the cardio studio, universal and free weights. Tennis, fitness classes, and personal training sessions are omitted.
- Two (2) Reusable Souvenir Water Bottles per room and access to Hydration water stations throughout the resort as we embrace our sustainability initiatives.
- Access to Indoor Theater and Poolside Movies.
- Weekly schedule of complimentary Resort Guest Activities.
- In-Room Coffee & Tea and Mini-Fridge (The Cove mini-fridges are not temperature regulated for medicine and dairy).
- Resort Shuttle Service
- Free Gaming Lessons (upon request)
- Unlimited Local Phone Calls

DOES ATLANTIS HAVE AN IN-HOUSE AV COMPANY? CAN COMPANIES BRING IN THEIR OWN PRODUCTION COMPANIES AND VENDORS?

We do have an in-house audio-visual vendor who has been with Atlantis since we opened, Zamar Audio. Groups may bring in their own AV and production companies however they will need to obtain Bahamian work permits and Zamar must be used for Rigging. Most of our groups will use Zamar's equipment to save on shipping in their own equipment.

HOW EASY IS IT TO SHIP MATERIALS TO THE BAHAMAS?

Since we are on an island we need to ship in goods everyday. Our shipping partner is Laser Shipping based in Miami. They will take care of all of the details getting items through customs in the most quickest reliable way. They have warehouse space in the hotel and are responsible for box and pallet movement and storage on property. The cost to ship varies on how far in advance goods are received and what mode of transportation can be used, either cargo container ship or aircraft. Typically the cost is not more than Fed Exp shipment.

HOW DO YOU RESPOND TO THE RECENT SECURITY LEVEL ANNOUNCEMENT FROM US EMBASSY?

The Bahamas has been a level two for a period of time, just as many popular locations that the public doesn't even realize. (<https://opm.gov.bs/statement-us-travel-advisory/>) such as France, Italy and UK that US travelers don't hesitate to travel too. The specific advisory from the Embassy was for Grand Bahamas and New Providence **not Paradise Island**. The area of concern, which is not close to us, is in the eastern part of Nassau. This is definitely not a tourist area and just like any city, which Nassau is the capital city of the Bahamas, any traveler should exercise caution when traveling in areas or neighborhoods they are unfamiliar with.

WHAT IS YOUR AFFILIATION WITH MARRIOTT?

We have a marketing partnership with Marriott and are a Bonvoy hotel where Marriott members can earn and redeem points staying with us at Coral, Royal and Cove towers. We have not management agreement with Marriott. Our employees are Brookfield Hospitality employees, and we manage ourselves.

WHAT DOES YOUR IDEAL GROUP LOOK LIKE?

Sunday Arrival – Thursday Departure – 250 rooms double occupancy, group breakfast daily, and three banquet dinners, 1 mid-week dine around. However, we welcome all size groups from 10 rooms to 2,000 rooms.

Our preferred arrival/departure patterns are Sun – Wed or Thursday and Wed – Sun or Thurs – Sun.

CAN YOU PROVIDE A LIST OF ATLANTIS SUSTAINABLE MEASURES?

Atlantis Blue Project Foundation

- Environmental Initiatives
 - Rescue & Rehabilitation
 - Endangered Species
 - Conservation
- Reusable Water bottles, elimination of single use plastics.

HOW DO YOU SELL AGAINST BAHAMAR?

Location: Paradise Island has a sense of luxury and exclusivity. Safety. Closer to popular excursions to Rose Island and swimming with Pigs, sailing catamarans, Fishing boats.

Brand: Atlantis has a strong brand and appeal, bucket list destination.

Property: One hotel sales contact and contract for multiple rooms products within Atlantis campus. Bahamar – multiple contact and contracts.

Service: We have a very tenured hotel team that has been in place providing hospitality as well as mentoring new team members over the years.

Rooms product: Grand Hyatt has a mixed offering of room products offering island/fountain view and waterview. Royal offers waterview and harborview – little disparity in room product for run of house rooms.

Customer Feedback: “too casino focused”, beach not as nice, small cramped pool decks.

Award winning Kids Clubs – AKA and Crush and AquaVenture. Bahamar tries to emulate but can't duplicate.

COMP SET

SOUTH FLORIDA

- Marriott Harbor Beach
- JW Marco Island
- Ritz Naples
- Ritz Naples Golf
- Fontainebleau
- Lowes Miami Beach
- Diplomat
- Boca Resort
- Breakers
- Loews Portofino Bay Hotel, Orlando

GUEST ROOMS

650
726
450
295
1,504
790
1,000
835
538
750

TOTAL FT²

95,180
140,347
42,000
14,500
96,000
65,000
209,000
165,000
80,000
89,000

HAWAII

- Ritz Carlton Kapalua
- Grand Wailea
- Hilton Hawaiian Village
- Hilton Waikoloa village
- Four Seasons Wailea
- Fairmont Orchid

GUEST ROOMS

463
776
2,860
1,233
305
484

TOTAL FT²

45,000
100,000
175,000
128,000
30,000
32,000



CARIBBEAN

- Ritz Carlton Aruba
- Ritz Carlton Grand Cayman
- Baha Mar
- Baha Mar, Grand Hyatt
- El Conquistador
- Hard Rock Punta Cana
- Paradisus Punta Cana
- Hyatt Ziva, Zilara Jamaica
- Marriott Aruba Resort & Stellaris Casino
- Fairmont Southampton, Bermuda
- Hilton Rose Hall Resort & Spa, Jamaica

GUEST ROOMS

320
375
2330
1800
918
1,787
652
623
411
593
521

TOTAL FT²

8,500
14,000
96,800
200,000
100,000
125,000
40,000
18,000
10,450
100,000
78,000

MEXICO

- JW Marriott Cancún
- Moon Palace Cancún
- Fiesta Americana
- Hilton Los Cabos
- Fairmont Mayakoba

GUEST ROOMS

447
2057
507
343
401

TOTAL FT²

46,000
146,000
20,000
11,000
30,000





teneo[®]
HOSPITALITY GROUP

ATLANTIS

PARADISE ISLAND BAHAMAS

MEETINGS • INCENTIVES • CONVENTIONS • EVENTS

[MEETINGSATATLANTIS.COM](https://meetingsatatlantis.com)

| GroupSales@AtlantisParadise.com

| 800.722.2449