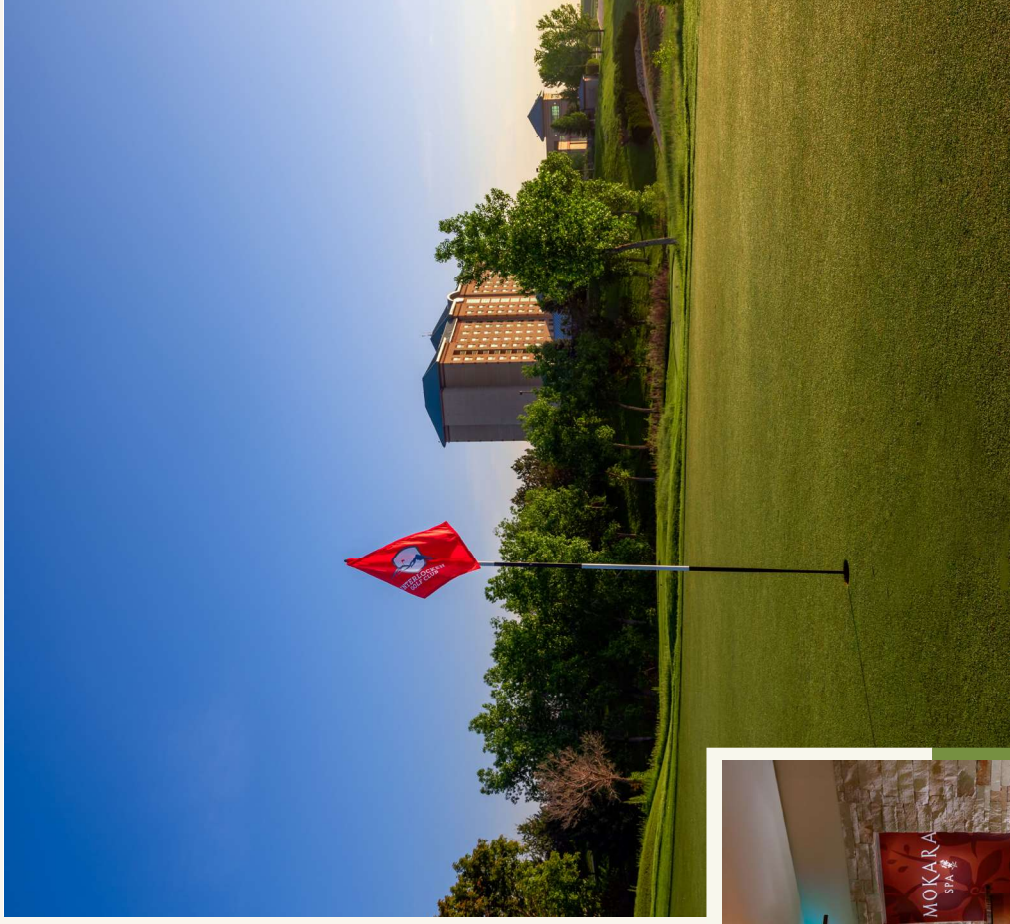
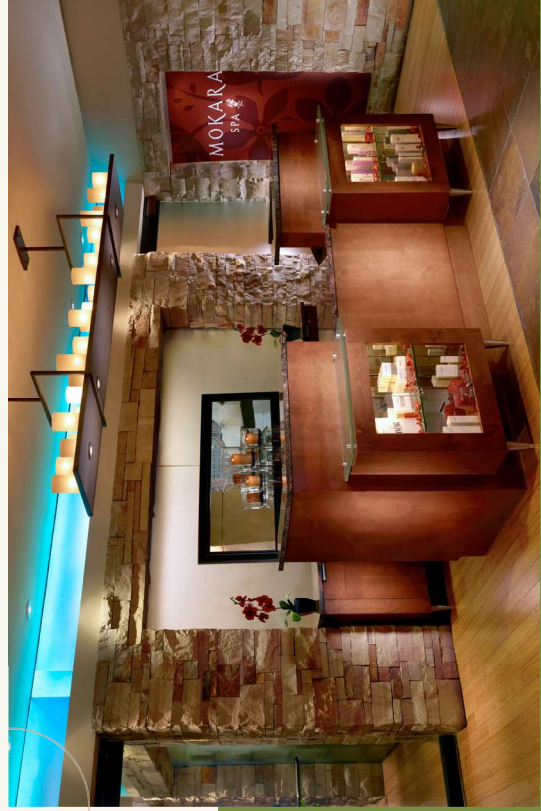


# Meetings & Event Guide.

OMNI INTERLOCKEN



EXPERIENCES  
MATTER HERE



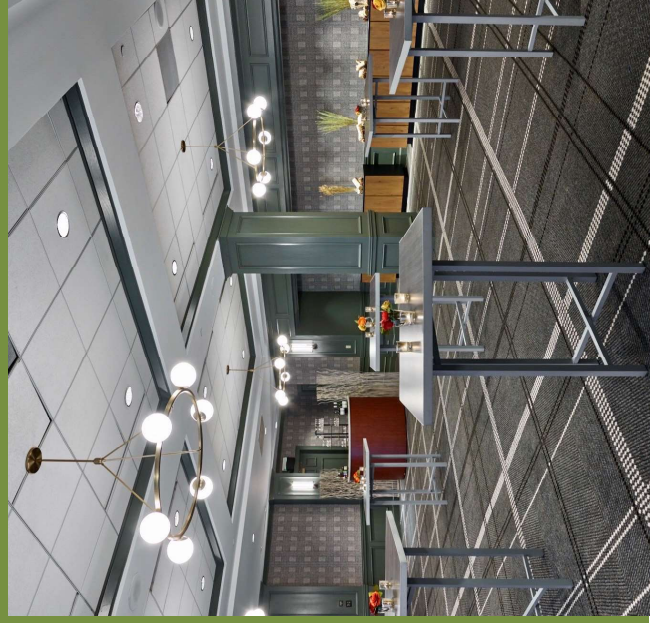
OMNI  
INTERLOCKEN

*about*

# Omni Interlocken.

## GATEWAY TO THE GREAT OUTDOORS

Enjoy a stay with endless possibilities at Omni Interlocken. Explore the cities of Denver and Boulder, just a short drive away. Or take advantage of our natural setting, tucked away in nature overlooking the Rocky Mountains. With easy access to city and rural charms, Omni Interlocken is a premier choice for leisure, meetings and celebratory events. Tee off on our championship golf courses, relax with a cocktail poolside or enjoy a selection of soothing spa treatments at Mokara Spa.

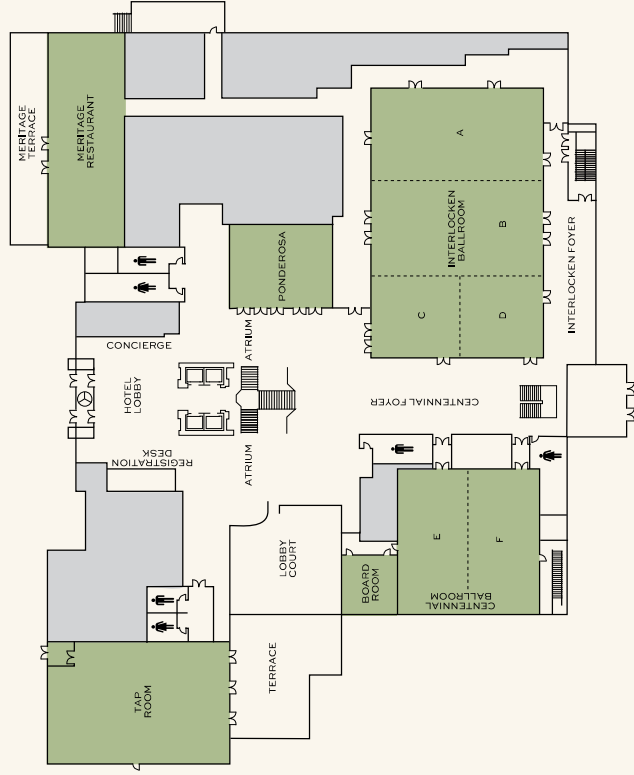


- 390 comfortable guest rooms and suites with expansive windows and Rocky Mountain views
- 40,000 square feet of flexible indoor and outdoor space for meetings and events, including two spacious ballrooms, 15 meeting rooms and outdoor terraces
- On-site audiovisual equipment services offering the latest technology and Wi-Fi internet access
- Mokara Spa - offering massage, facial and nail treatments to relax and rejuvenate
- Two sparkling resort swimming pools and a soothing hot tub open year-round

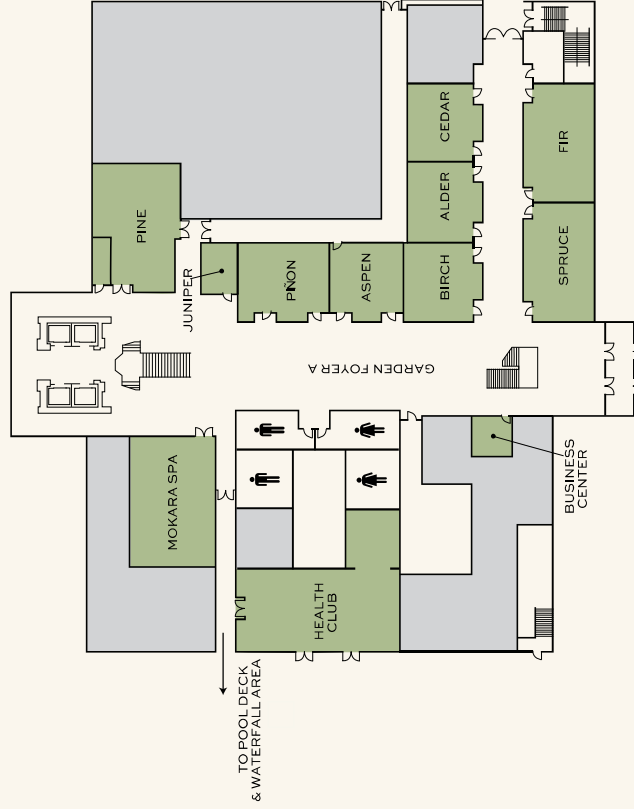
- Five distinct bars and restaurants including homemade breakfast featuring local ingredients at Meritage, casual dining from the beautiful terrace at Fairways, freshly-brewed coffee and pastries at Morsel's Café, classic pub fare and local Colorado beers at sports bar The Tap Room Restaurant & Bar and refreshing drinks and snacks at H2O Poolside Bar & Grill
- 27 holes of championship golf across three individual nine-hole courses; ranked third in "Best Resort Courses of Colorado"
- A state-of-the-art fitness center with Peloton bike, treadmills, free weights, Nautilus machines and more, open 24/7

# Flexible, Next Generation Event & Meeting Space.

LOBBY LEVEL



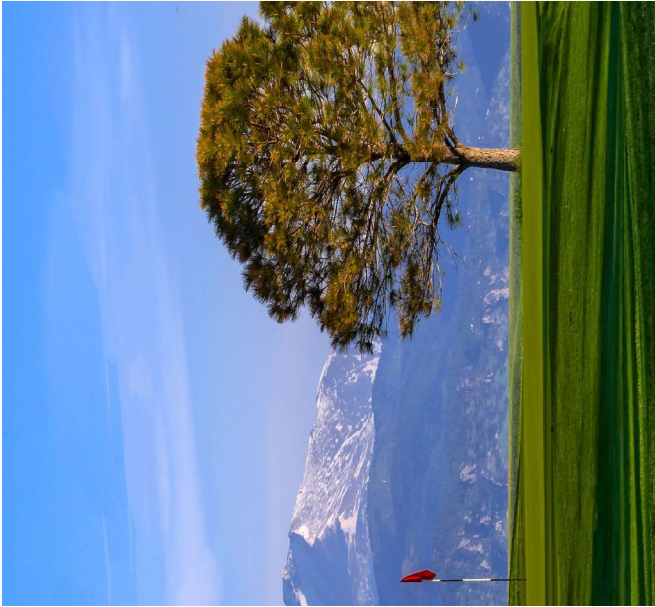
GARDEN LEVEL



ROOM NAME	FLOOR	SQUARE FOOTAGE	DIMENSIONS	CEILING HEIGHT	THEATER	CONFERENCE	U-SHAPE	HOLLOW SQUARE	CLASSROOM 3 PER 6	CLASSROOM 2 PER 6	BANQUET 60" (10)	BANQUET 72" (12)	RECEPTION	6' TABLE TOP EXHIBITS	EXHIBITS 8X10	EXHIBITS 10 X 10
INTERLOCKEN BALLROOM	1ST	9120	120 X 76'	16'	1100	-	-	-	541	362	644	700	947	100	56	52
INTERLOCKEN BALLROOM A	1ST	3040	76' X 40'	16'	280	60	66	78	162	110	220	204	316	30	18	15
INTERLOCKEN BALLROOM B	1ST	3496	76' X 40'	16'	360	60	69	84	195	130	240	240	368	34	21	17
INTERLOCKEN BALLROOM C	1ST	1428	32' X 42'	16'	140	32	41	42	81	54	30	72	153	13	9	7
INTERLOCKEN BALLROOM D	1ST	1156	34' X 34'	16'	128	26	36	42	66	44	80	72	121	10	-	-
CENTENNIAL BALLROOM	1ST	4096	64' X 64'	12'	420	72	72	90	231	154	250	300	421	37	26	20
CENTENNIAL BALLROOM E	1ST	2048	32' X 64'	12'	210	48	57	60	126	86	140	144	211	24	12	10
CENTENNIAL BALLROOM F	1ST	2048	32' X 64'	12'	210	48	57	60	126	86	140	144	211	24	12	10
ATRIUM	1ST	4611	-	32'	-	-	-	-	-	-	-	-	-	21	9	7
CENTENNIAL FOYER	1ST	2120	28' X 68'	32'	-	-	-	-	-	-	-	-	211	15	10	5
INTERLOCKEN FOYER	1ST	2064	20' X 70'	12'	-	-	-	-	-	-	-	-	211	15	6	5
PONDEROSA	1ST	1628	37' X 44'	11'	128	32	36	42	75	24	80	96	100	17	-	-
BOARDROOM	1ST	567	21' X 27'	12'	60	16	19	20	36	24	40	48	40	-	-	-
GARDEN FOYER A	GARDEN	3000	75' X 25'	10'	-	-	-	-	-	-	-	-	-	-	7	7
GARDEN FOYER B	GARDEN	1148	14' X 91'	10'	-	-	-	-	-	-	-	-	-	-	-	-
PINE	GARDEN	1185	44' X 29'	10'6"	114	32	36	42	63	42	70	72	75	-	-	-
SPRUCE	GARDEN	850	40.5' X 21'	10'6"	90	32	35	40	36	30	60	48	60	-	-	-
FIR	GARDEN	850	40.5' X 21'	10'6"	90	32	35	40	36	30	60	48	60	-	-	-
BIRCH	GARDEN	648	27' X 24'	10'6"	60	20	23	26	30	16	40	48	40	-	-	-
ALDER	GARDEN	648	27' X 24'	10'6"	60	20	23	26	30	16	40	48	40	-	-	-
CEDAR	GARDEN	648	27' X 24'	10'6"	60	20	23	26	30	16	40	48	40	-	-	-
ASPEN	GARDEN	624	26' X 24'	10'6"	60	18	24	30	20	20	40	48	35	-	-	-
PINION	GARDEN	638	29' X 22'	10'6"	70	20	24	28	28	20	40	48	-	-	-	-
JUNIPER	GARDEN	224	14' X 16'	10'6"	-	8	-	-	-	-	10	-	-	-	-	-
POOL DECK	OUTDOORS	-	-	-	-	-	-	-	-	-	150	-	200	-	-	-
TAP ROOM TERRACE	OUTDOORS	1280	-	-	-	-	-	-	-	-	-	-	50	-	-	-
FAIRWAYS TENT	OUTDOORS	3000	50' X 60'	-	-	-	-	-	-	-	240	-	-	-	-	-
FAIRWAYS TERRACE	OUTDOORS	-	-	-	-	-	-	-	-	-	-	-	100	-	-	-
PAVILION	OUTDOORS	4750	95' X 50'	12'	-	-	-	-	-	-	350	-	475	-	-	-

MEETING ROOM CAPACITIES WERE DETERMINED USING 72" ROUNDS OF 10 (ROUNDS CAPACITY), THREE CHAIRS PER 6'X30" TABLE (U-SHAPE CAPACITY) AND THREE CHAIRS PER 6'X18" TABLE (CLASSROOM CAPACITY) ALLOWING FOR MINIMAL AUDIOVISUAL EQUIPMENT.

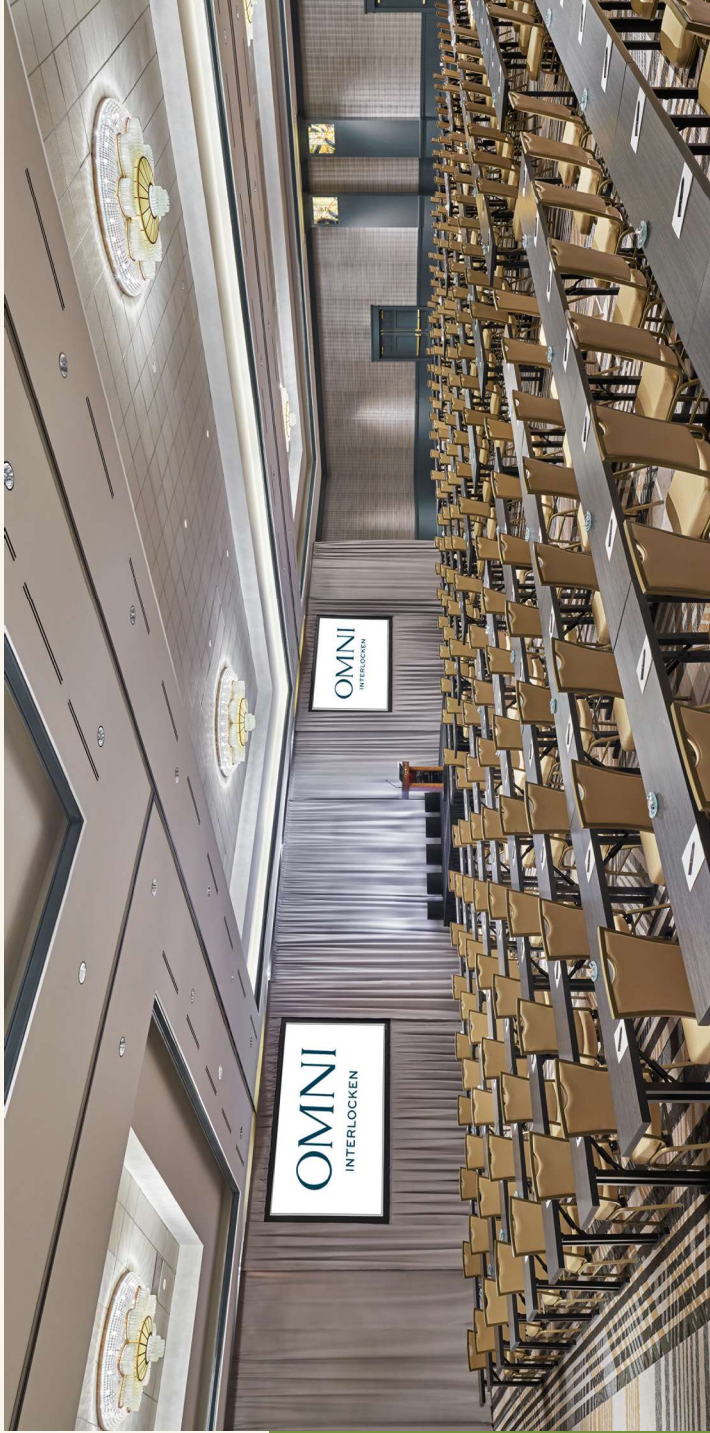




# Mountain Luxury Awaits YOUR ARRIVAL.

Blaze your own trail and experience the great outdoors. Picture yourself here, with the stunning Rocky Mountains as your backdrop and Colorado's most popular destinations at your fingertips—this is your basecamp for discovery and adventure. Our resort's unbeatable location makes it easy to visit Denver, Boulder, or even Estes Park.

With more than 40,000 square feet of indoor newly reimagined meeting space and numerous unique outdoor spaces, Omni Interlocken is the perfect spot to make your program a memorable one. Explore all that the area has to offer or stay and enjoy our resort style amenities Like Golf, Spa, Adventure and Wellness. You decide, but Omni Interlocken will customize your meeting with personalized service, incredible food and beverage, luxurious offerings and more.



# Denver *highlights.*

Located between Denver and Boulder, Omni Interlocken offers easy access to the best of both. Explore the cultural gems of each city, from immersion in the night sky at Boulder's Fiske Planetarium to the diverse works of the Denver Art Museum. Near hiking, skiing, and the many natural beauties of Colorado, you'll find plenty to enjoy.

## SHOPPING

- FlatIron Crossing | 3 min
- 29th Street Shopping Mall | 15 min
- Pearl Street Mall | 17 min
- Cherry Creek Shopping District | 35 min

## AIRPORT

- Denver International Airport (DEN) | 30 min
- Boulder Municipal Airport (BDU) | 40 min

## ARTS & CULTURE

- Fiske Planetarium | 15 min
- Denver Performing Arts Complex | 25 min
- Denver Art Museum | 30 min
- Denver Museum of Natural Science | 30 min
- Red Rocks Amphitheatre | 33 min
- Denver Botanical Gardens | 30 min

## DINING & ENTERTAINMENT

- Pearl St | 20 min
- Downtown Louisville | 10 min
- River North Art District (RiNo) | 20 min
- Lower Downtown Denver (LoDo) | 25 minA
- Butterfly Pavilion | 10 min
- Celestial Seasonings Tea Company | 20 min
- Denver Aquarium | 20 min
- Coors Brewery Tours | 25 min
- Denver Zoo | 30 min

## OUTDOOR RECREATION

- Colorado Wilderness Rides and Guides | 20 minutes
- Chautauqua Park | 14 min
- Estes Park | 1 hr
- Breckenridge Ski Resort | 1 hr, 50 min



**OMNI INTERLOCKEN**  
**500 INTERLOCKEN BLVD**  
**BROOMFIELD, COLORADO 80021**  
**303.438.6600**  
**OMNIHOTELS.COM/INTERLOCKEN**

