

Revival *of* an ICON.



Renovation Completion Fall 2024

OMNI
SEVERIN

PROJECT OVERVIEW

In 1913, at the height of the railroad era, building a hotel across the street from Indianapolis' Union Station was a savvy business move for Henry Severin Jr. The Severin quickly became a favorite luxury hotel for 22,000 passengers arriving on the 300 daily trains.

The upcoming renovation of the Omni Severin Hotel will revive this historic icon by transforming the newest parts of the building to resemble the original architecture and style.

The Omni Severin will evoke the glamour and charm of the hotel's illustrious past, blending a touch of modernity through the artful layering of textures, materials, colors and meticulous details inspired by the Art Deco era.

The newly redesigned spaces are a perfect blend of timeless sophistication with historic and modern juxtaposition that will create an ideal backdrop for leisure, corporate or group stays.



OMNI
SEVERIN

GUEST ROOMS

The guestrooms draw inspiration from the bygone glamour of train travel, seamlessly blending the allure of the past with modern conveniences. With a harmonious fusion of eclectic and tranquil elements, these spaces exude both glamour and charm. The high-contrast carpeting against a neutral palette creates a striking visual impact with design embellishments that pay homage to the railway adding subtle nods that enhance the overall aesthetic.

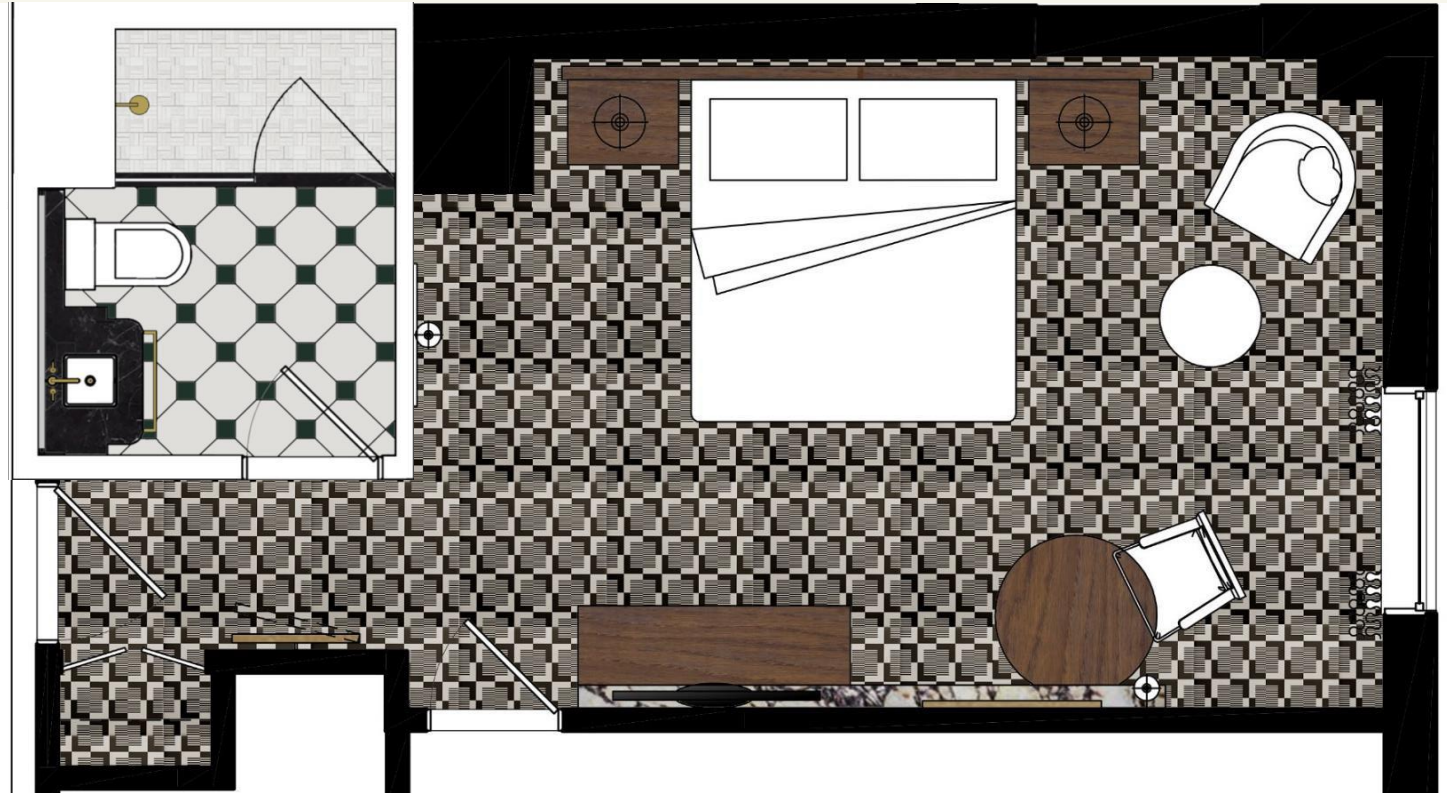


KING, QUEEN QUEEN, & LARGE KING ROOMS

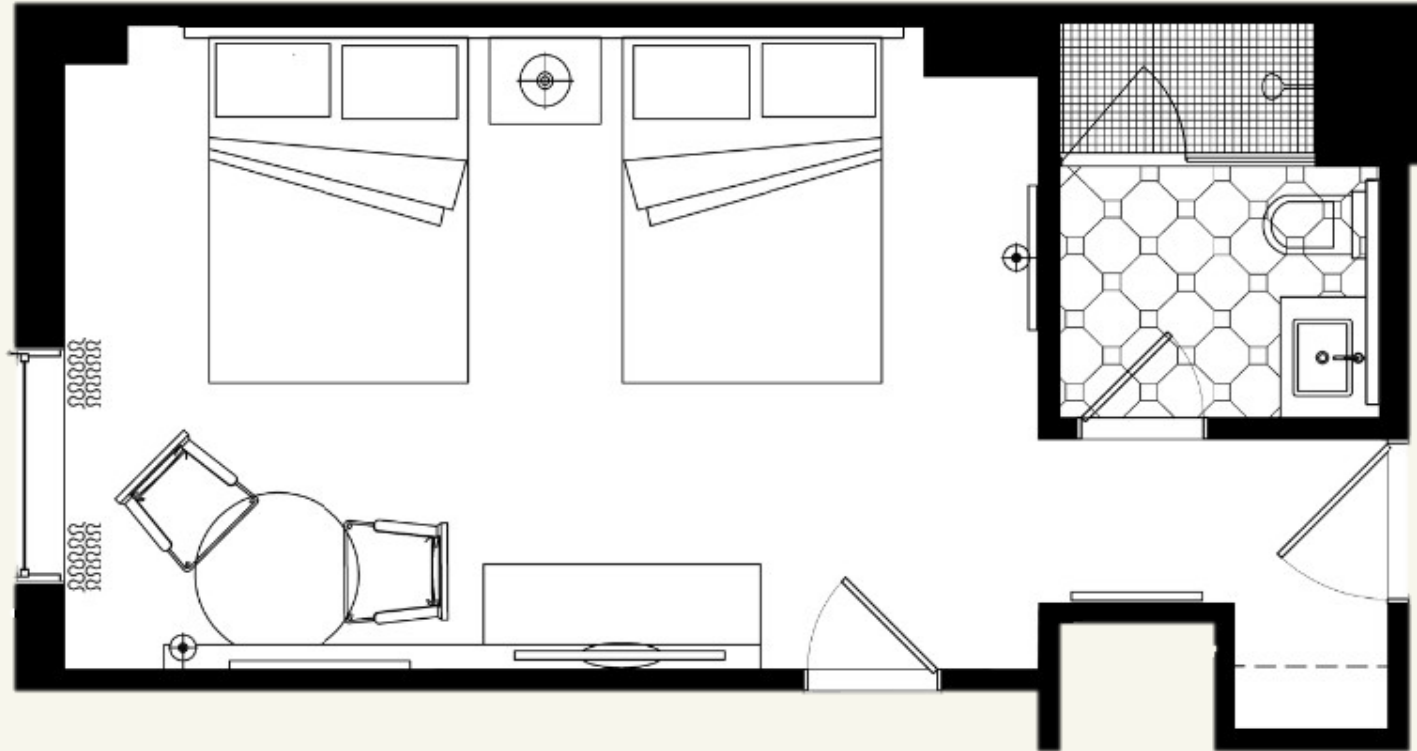
- Oversized illuminated arched mirror in the bathroom offering ample light
- Mix of brass and black metal to create complexity and interest in the spaces
- Activity table that serves as a multi purpose desk for working, games and dining
- Lowboy designed to resemble a luxurious vintage luggage trunk with material and texture that resemble a resin coated canvas in a deep jade green.



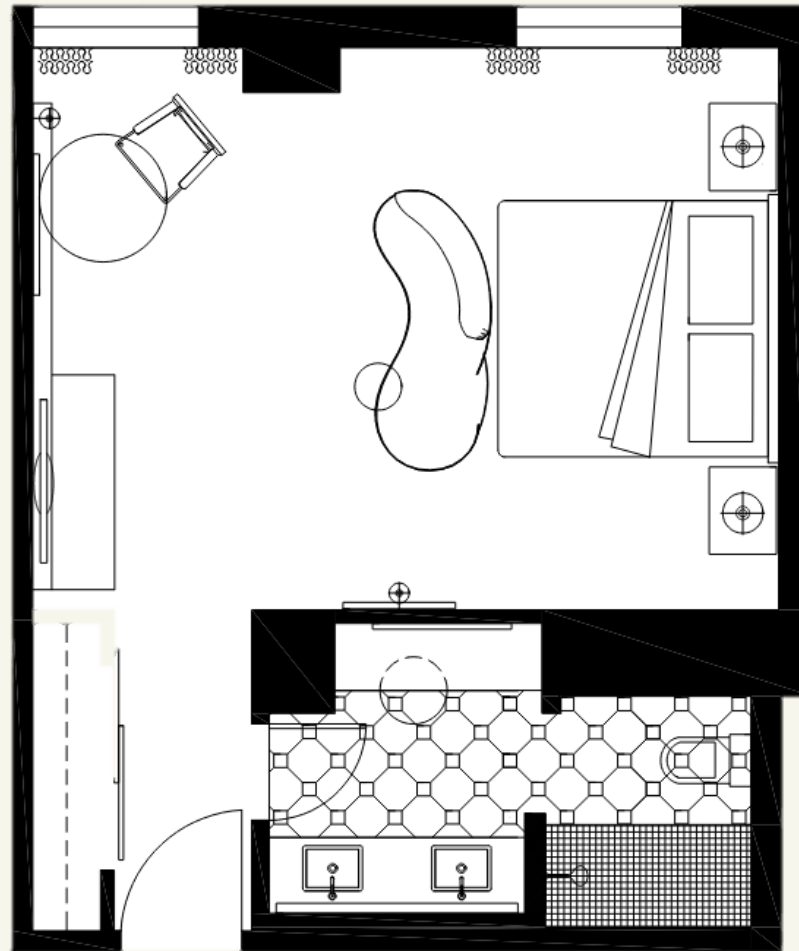
KING FLOORPLAN



QUEEN QUEEN FLOORPLAN



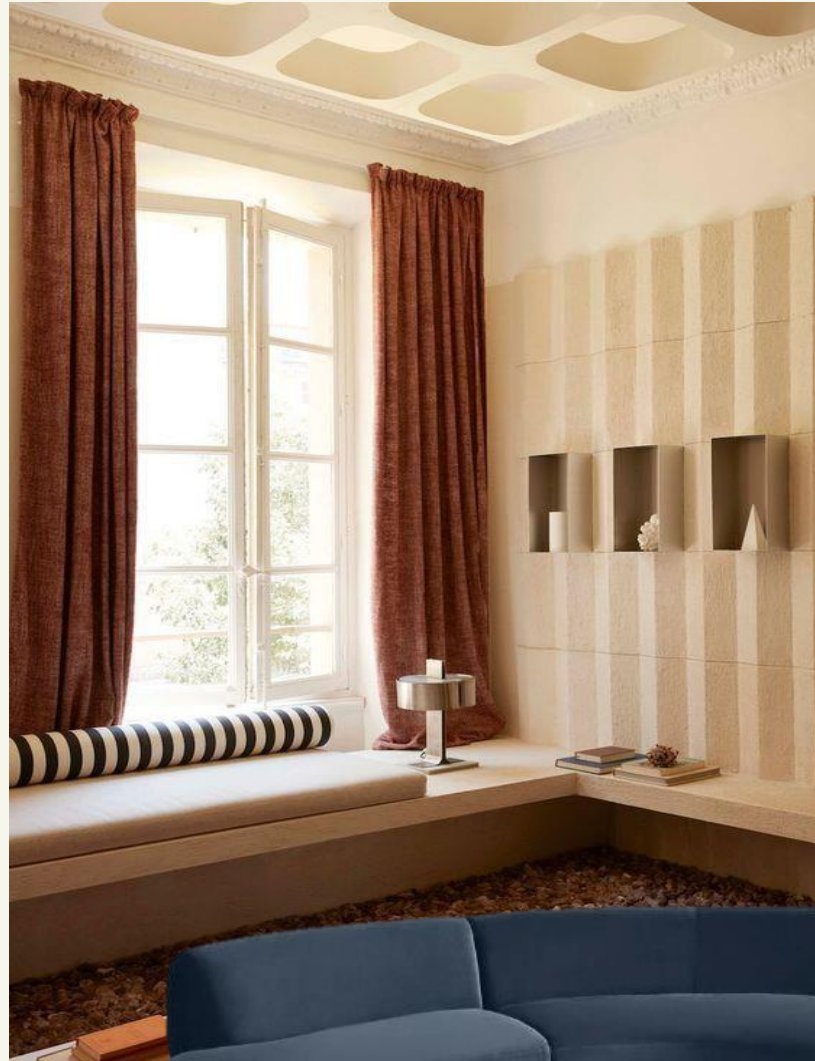
LARGE KING FLOORPLAN



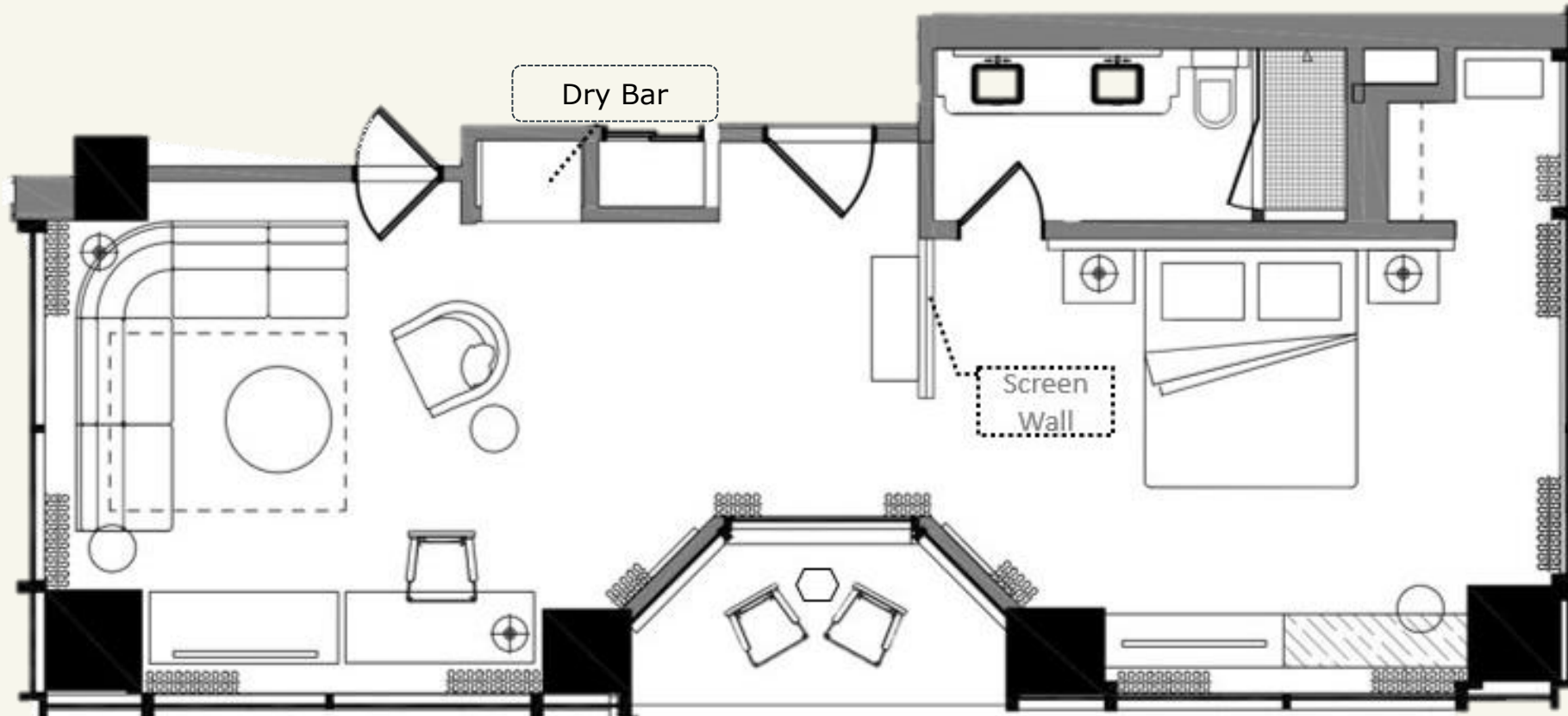
PLAZA SUITES

These one-bedroom suites feature floor-to-ceiling windows and a private balcony offering captivating views of Lucas Oil Stadium, Gainbridge Fieldhouse, and Union Station. Adorned with art inspired by vintage tea service, the suites also feature a window bench for added comfort.

- Living space measuring 378-square feet
- Oversized illuminated arched mirror in the bathroom offering ample light
- Separate living area with sectional sleeper sofa



PLAZA SUITES FLOORPLAN



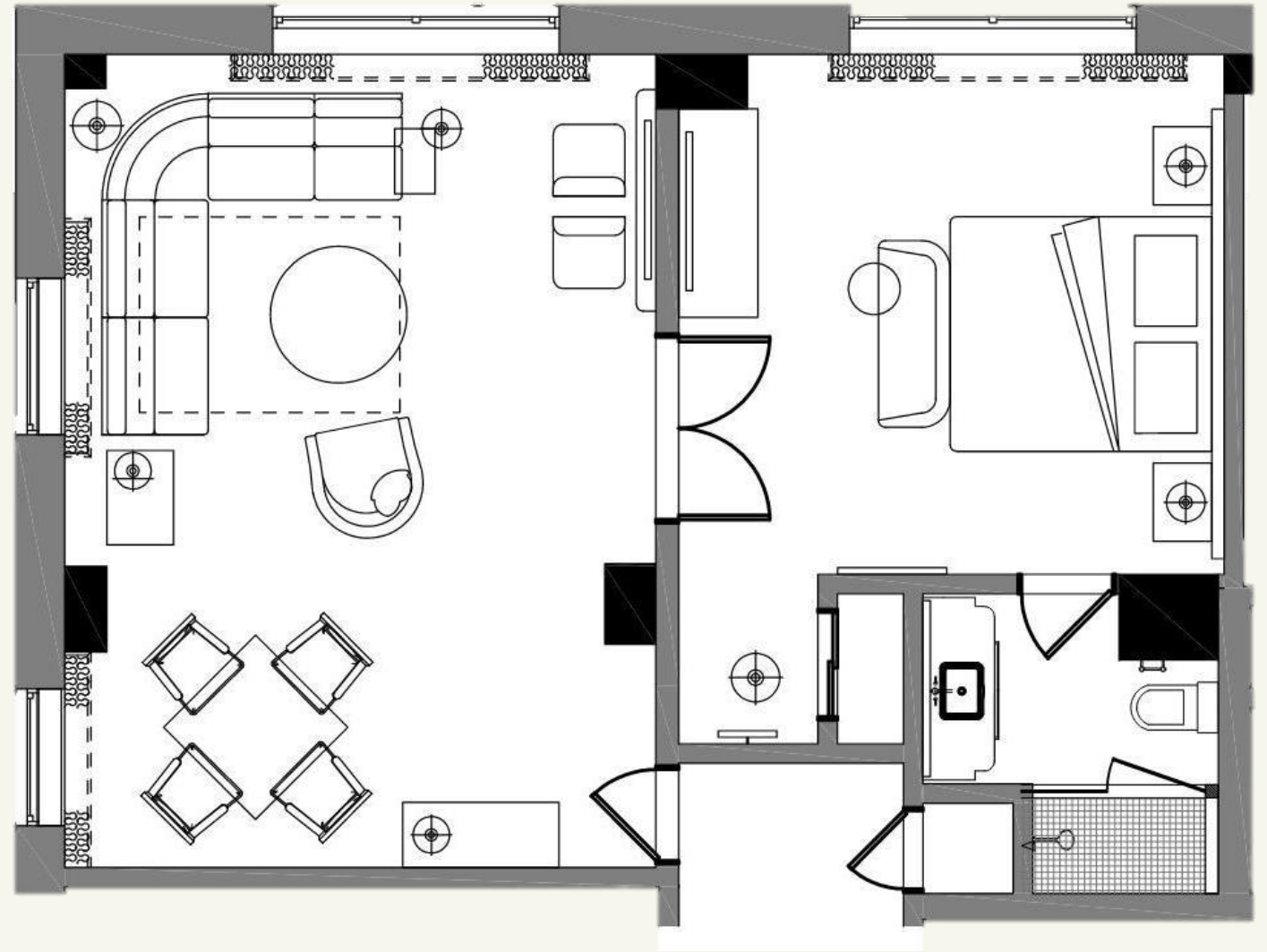
MONUMENT “GAME” SUITES

These one-bedroom suites provide breathtaking vistas of lively Georgia Street and the bustling city marketplace. Designed with ample space for living and dining, the suites also include in-room games for added enjoyment.

- Living space measuring 581-square feet
- Oversized illuminated arched mirror in the bathroom offering ample light
- Separate living area with sectional queen sleeper sofa



MONUMENT “GAME” SUITES



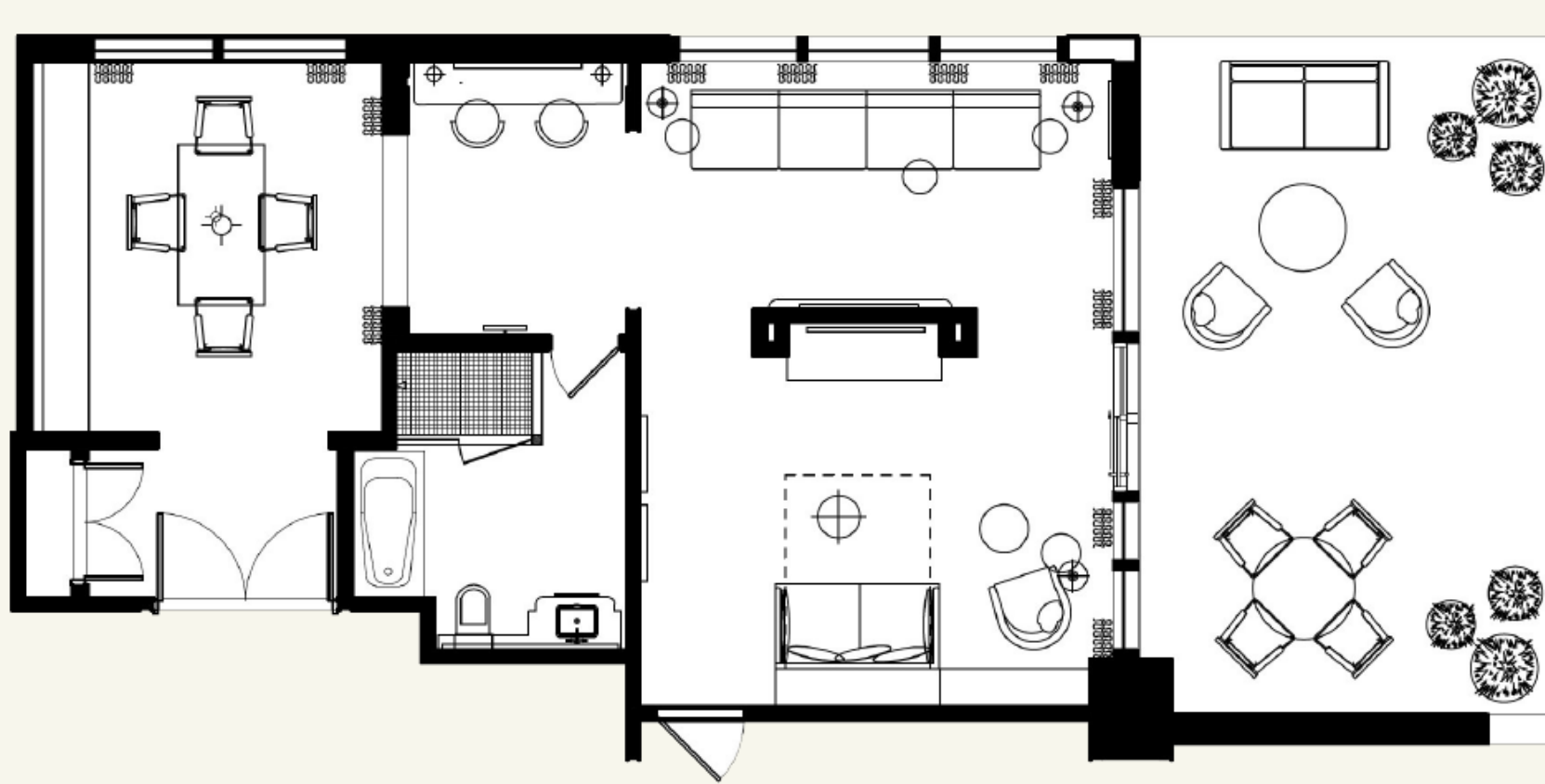
LILLY SUITE

This premier suite is located on the top floor with a large outdoor furnished patio with magnificent views of the city skyline. It features a parlor room for entertaining and a dressing area with ample lighting.

- Oversized illuminated arched mirror in the bathroom
- Separate shower and tub
- Outdoor lounge and dining seating



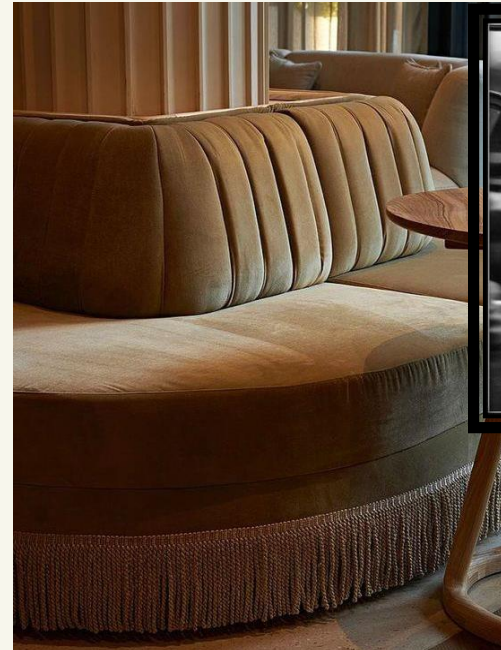
LILLY SUITE FLOORPLAN



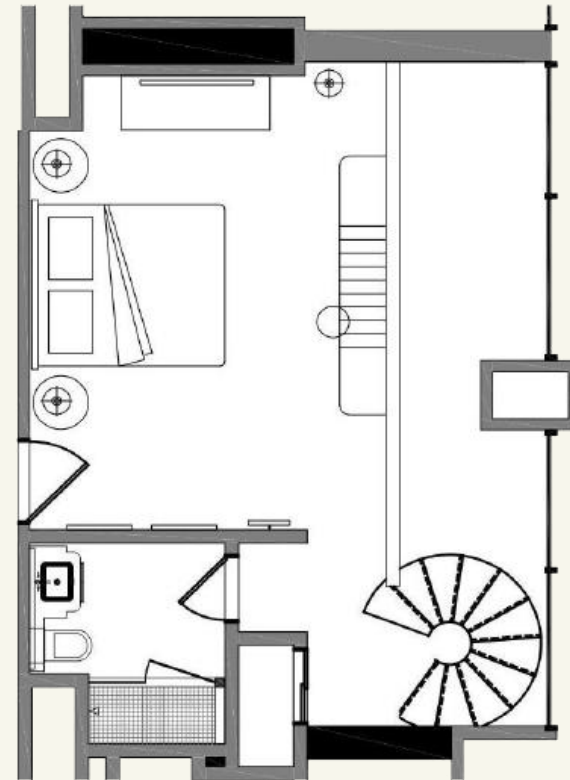
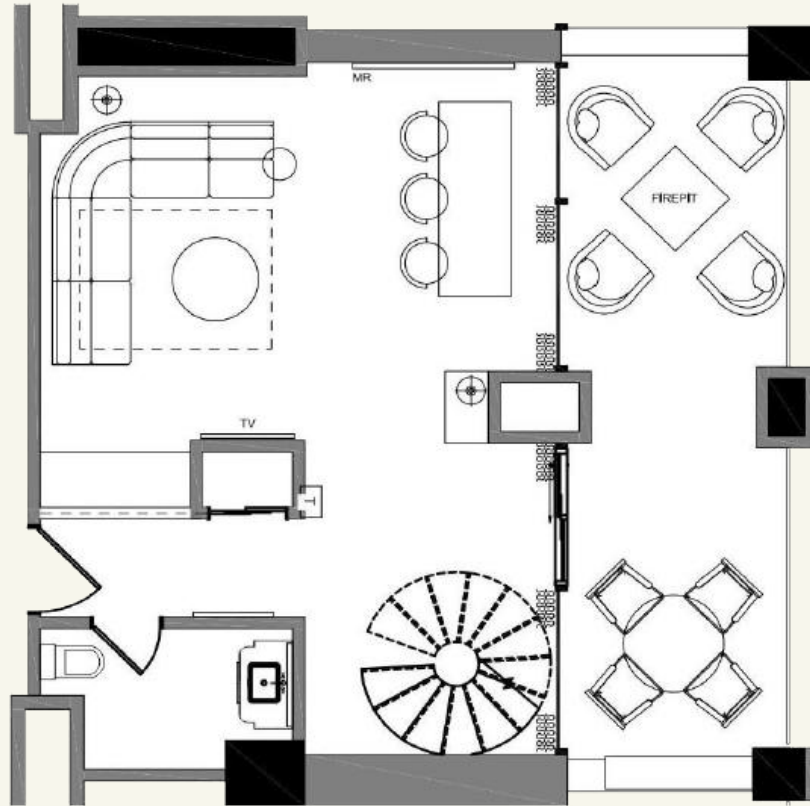
BI-LEVEL BRIDAL SUITE

This bi-level suite is equipped with an elongated makeup table and a tri-fold oversized floor mirror, ideal for preparing for special occasions. The suite exudes a sense of vintage glamour through its textures, colors, and meticulous details inspired by the Art Deco era.

- Living space measuring 699-square-feet
- Wet bar and living area
- Outdoor lounge and dining seating
- Spiral staircase leading to bedroom and full bathroom



BI-LEVEL BRIDAL SUITE FLOORPLAN



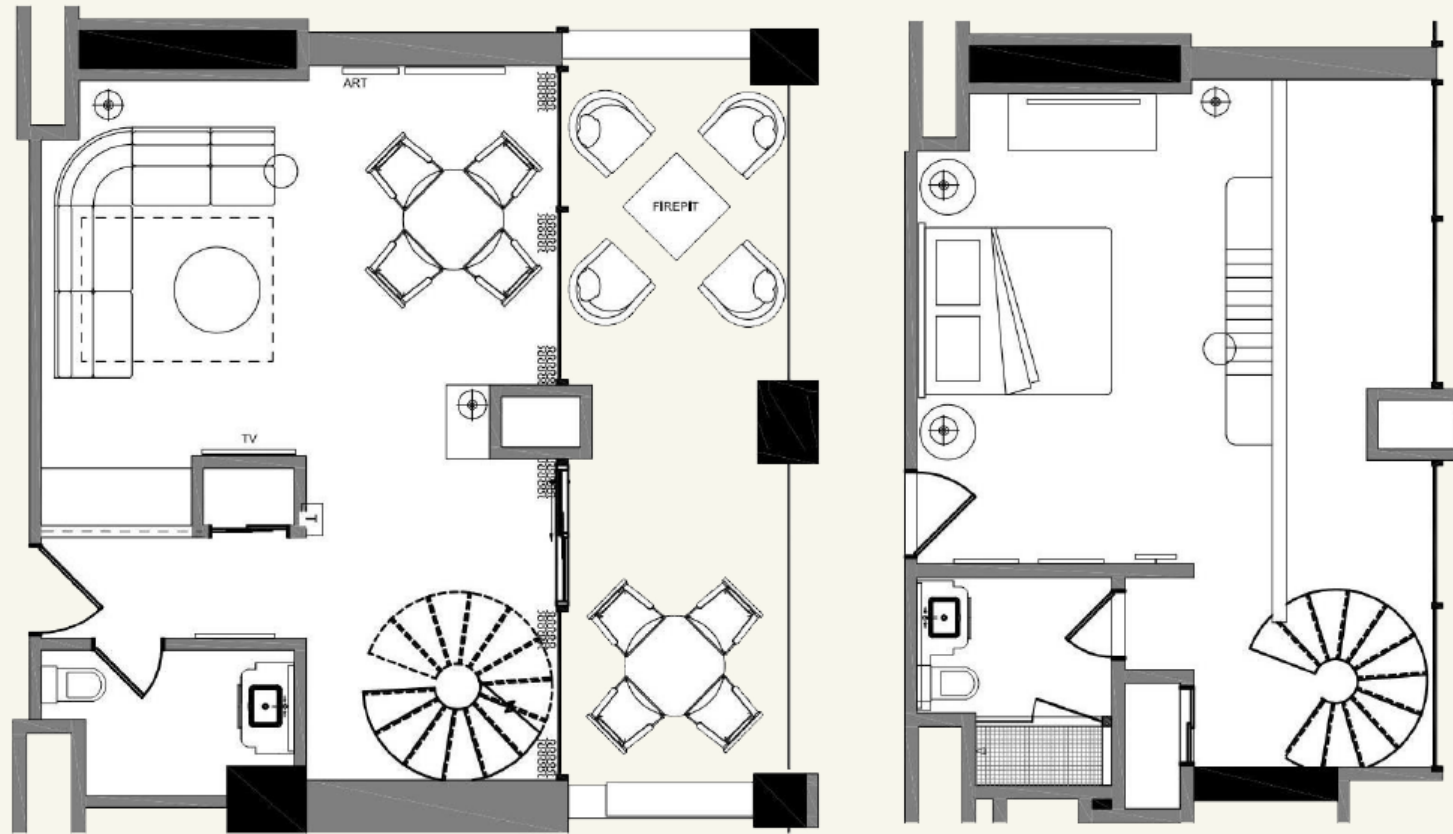
BI-LEVEL PARTNERSHIP SUITE

This bi-level suite features a living area, dining table, and expansive outdoor space on the first floor. Guests will enjoy views of the city skyline or downtown business district.

- Living space measuring 699-square-feet
- Wet bar
- Dining and lounge seating on patio
- Spiral staircase leading to bedroom and full bathroom



BI-LEVEL PARTNERSHIP SUITE FLOORPLAN



PRESIDENTIAL SUITE #1

Unexpected pops of color infuse an atmosphere of elegance and luxury in this suite. A showstopping foyer makes way to a dining space, living room, and powder bathroom on the first floor. The spiral staircase leads to two bedrooms each with its own private bathroom.

- Living space measuring 1,344-square-feet
- Modern Art Deco light fixtures
- Private balcony with views of eclectic Wholesale District



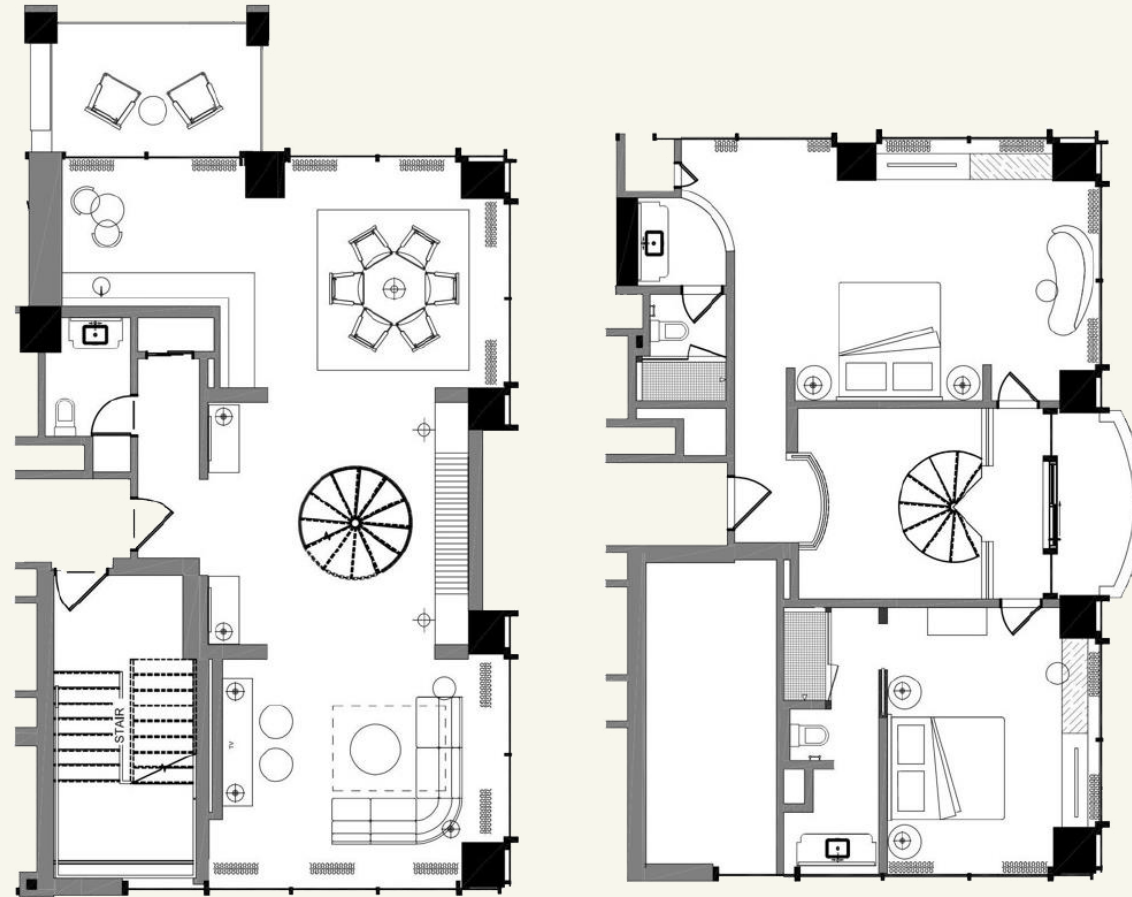
PRESIDENTIAL SUITE #2

The grand foyer commands attention as it transitions into a dining area, living room, and powder bathroom on the first floor. Ascending the spiral staircase unveils two bedrooms, each accompanied by its private bathroom.

- Living space measuring 1,344-square-feet
- Modern Art Deco light fixtures
- Private balcony with views of eclectic Wholesale District



PRESIDENTIAL SUITES FLOORPLAN



LOBBY & RECEPTION

The captivating elegance of the hotel's interiors is reminiscent of the Art Deco era and designed to meet the needs of today's travelers.

The lobby acts as a central gathering space connecting outlets on either side and leads to the reception desk featuring a mural that artfully depicts the billowing smoke from a train engine.



F&B OUTLETS



BAR CARDINALE

Situated adjacent to the lobby on the left, this space offers lunch, dinner and drinks. It showcases expansive onyx panels, green hues and reflective materials.

The bar features artful inclusion of cardinals throughout the design, a nod to the days when guests would arrive on the premier Cardinal train line to experience the city and Indiana's state bird would rest along the train line.



8TH NOTCH CAFE

The first union station in the world was built in Indianapolis opening in 1853. The head house, encompassing the main waiting area and office, and clock tower still stand today and provide inspiration for the café with its tile patterns, color and millwork.

The walls showcase artwork proportioned to match the dimensions of trains from 1917, depicting silhouettes of travelers.

The origin of the name “8th Notch” is inspired by the highest speed by a train, while the logo illustrates the front engine surrounded by tracks.



MEETING ROOMS

The Omni Severin offers an array of historic ballrooms and modern meeting spaces in the heart of downtown Indianapolis.

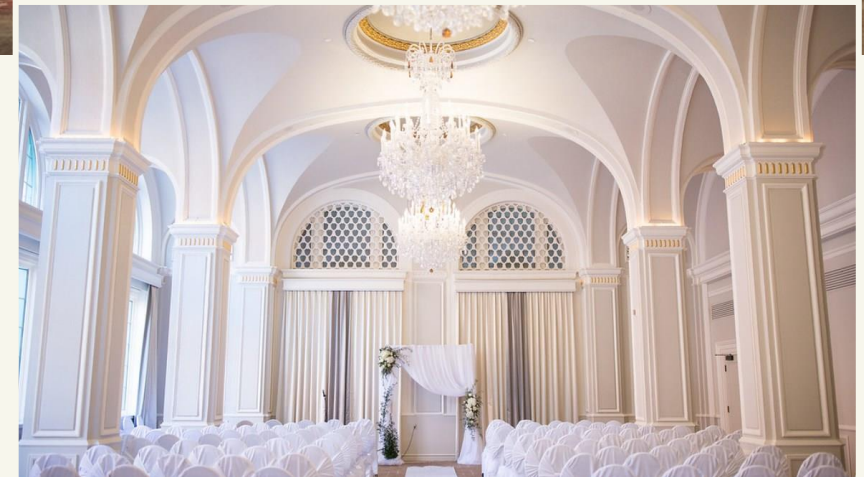
Connected via skywalk to the Indianapolis Convention Center, our hotel is perfectly positioned for industry conferences.



SEVERIN BALLROOM & LOBBY

The 2,440 square-foot ballroom and lobby space blends modern conveniences with the elegant grandeur reminiscent of the early 1900s.

The ballroom features three ornate crystal chandeliers, soaring ceilings with arched detail and large windows allowing ample natural lighting.



FISHER BALLROOM

The Fishers Ballroom features 2,438 square-feet of space, two large crystal chandeliers and high ceilings.

JENNINGS BALLROOM

The Jennings Ballroom takes center stage as the hotel's largest meeting room. Boasting 3,036 square-feet, this ballroom offers the perfect mix of functionality and space.



BOARDROOMS

For smaller groups or more intimate gatherings, the Omni Severin offers a selection of well-appointed boardrooms.

These spaces are thoughtfully designed and equipped with modern meeting amenities, ensuring a comfortable and productive environment.

